



## GE Interlogix Calibur

### A jeweler's best friend

During the holiday season we suffered a series of shoplifting losses. We considered purchasing a couple cameras, a multiplexer and a VCR to record activity in our store. But our dealer suggested we look into the Calibur DVMRe-CT. It captures weeks of images without any attention. It means I don't have to change tapes or worry about equipment going down. And I don't have to hire someone else to do it. We took his advice. When thieves struck again, it didn't take long to find them. Playing back events revealed a woman and man who worked together. We captured it all. And with the DVMRe-CT's high-resolution images, we could zoom in on a small tattoo on the woman's hand and make a positive ID. We saved the video clips on a recordable CD for the police, and we sent still images to jewelers through email. Within a week, the police caught the thieves. They say diamonds are a girl's best friend. Mine's the Calibur DVMRe-CT.



Now with  
Triplex™ technology  
and motion search



DVMR<sup>e</sup>-16CT

Calibur by KALATEL



# Calibur™ DVMR<sup>e</sup>-CT

Digital Video Multiplexer/Recorder

# Introducing hassle-free video surveillance: Save time. Save money. And get more in return.

---

## The next-generation Calibur DVMRe-CT at a glance

The DVMRe-CT (Triplex) combines a digital video multiplexer and a leading-edge technology digital video recorder in one unit. It records video from up to 16 cameras and single-channel audio to its internal hard drive. Because it's digital, it gives you superior quality images and spares you the headaches of VCR maintenance and videotape management.

Its Triplex™ technology lets you view live multiscreen images and

review playback at the same time while recording. It also offers dual digital monitor outputs, data search functions, support for up to 20 languages, and sophisticated motion search and motion detection capabilities.

Best of all, the Calibur DVMRe-CT is easy to use. If you can use a standard multiplexer and VCR, you can use the Calibur DVMRe-CT.

---

## Capture clearer images – and more of them

During playback, the DVMRe-CT delivers clear digital images you just can't get with a VCR. And the images are virtually noise free. That means you can see details like faces and license plate numbers clearly.

You can even pause the recording or step through the recording frame by frame. All the images you see are

clear. They don't jitter or flicker like paused VCR images.

The DVMRe-CT uses patented Parallel Video Processing™ (PVP) to capture up to 60 pictures per second. That's twice as many as other digital recorders and more than three times as many as multiplexer-VCR combinations.

---

## Change setups quickly and automatically with macros

Saved setups, called "macros," tell the DVMRe-CT which cameras to display on the monitor, which to record, how to display them (full-screen, sequencing, four-way, PIP, etc.), what record speed to use, which external alarms to activate and more. Macros make changing your system setup easy. You can schedule them to change settings automatically for different

guard shifts or for daytime, nighttime and weekend surveillance.

With the DVMRe-CT you can also set separate record rates for each camera—time-lapse mode, event mode or both. This recording flexibility helps you capture only the video you need, and it extends the capacity of your DVMRe-CT.



### Select multiscreen modes quickly and easily for two monitors

First choose Monitor-A or Monitor-B.

Then choose one of eight multiscreen modes with the touch of a button.



The DVMRe-CT uses video motion detection to look through the camera, detect changes in the scene and recognize them as alarm conditions. During setup, you tell the DVMRe-CT what conditions count as alarms: object size and object location within a scene. Then you set detection sensitivity and false-alarm-rejection levels.

This built-in alarm-detection capability means you can reduce your investment in stand-alone, external alarm devices.

The DVMRe-CT also helps you capture more information during on alarm. When an alarm is triggered, your DVMRe-CT can display images from the camera at the alarm location as well as images from up to four cameras associated with the alarm area. This way you can track an intruder or cover an escape path with multiple cameras.

Can't remember how to set up motion detection? Just go into the on-screen help menu.

## Reduce your investment in alarm equipment



Define any target area within a camera's field of view.



When the defined motion detection target is violated, the DVMRe-CT can begin recording at a faster rate.



For more information about digital recording and free Web-based training on Calibur digital recording products, visit [www.caliburdigital.com](http://www.caliburdigital.com)

### Two-button setup change

Macros make it easy to instantly change recording setups.

### Precision control

Zip through recordings or review the action frame by frame with the jog/shuttle dial.



### Just like a VCR

The DVMRe-CT features familiar VCR-like controls that make it as easy to use as a standard VCR.

### Find it fast

Search for images by alarm, time, date and ATM or POS text.

# Get connected: Increase the performance of your video surveillance system

**Control DVMRe-CT units and your entire system with a KTD-405 keypad**



Learn more about the KTD-405 keypad. Visit the **System Control** section of the online catalog at [www.kalatel.com](http://www.kalatel.com)

- Search and play back video from DVMRe-CT units
- Control CyberDome® pan/tilt/zoom functions
- Initiate CyberDome® camera tours or call up presets
- Switch live video using Digiplex® switchers
- Program Calibur™, CyberDome® and Digiplex® system components
- Partition larger systems into easy-to-navigate zones – as many as 32 zones with up to 32 cameras in each zone

**Watch video and control PTZ cameras from your PC with WaveReader**

Every DVMRe-CT is Ethernet ready. Just plug it into your network and give the unit a name and a network address. Then run the WaveReader software (supplied with the DVMRe-CT) from a remote PC. That's it. Whenever you want to access the DVMRe-CT, just run WaveReader and click the connect button.

Now you can watch live or recorded video from all cameras

connected to the DVMRe-CT. The DVMRe-CT keeps recording even if someone at the unit itself is watching live and recorded images.

You can even use WaveReader to control PTZ units connected to the DVMRe-CT. Call up camera presets or control the camera's position with a keyboard and mouse. The DVMRe-CT also features auto color detect for use with day/night domes.

## **Big-system building block**

Auto-terminating, looping video inputs let you pass video to matrix switchers and other components. Make a DVMRe-CT part of a large system.

## **Interact with the outside world**

Respond to external alarms or alarm situations detected by the DVMRe-CT with 4, 10 or 16 alarm inputs and two relay outputs.



## **Archiving and storage options**

Connect a CD writer for selective archiving, or connect a Calibur DVSe or RAID for extra storage.

Any time you're viewing with WaveReader, you can take a snapshot of the current image. You can print the snapshot file or share it with others. You can even save video clips to your hard drive to view later. Or save them in self-playing QuickWave format, which lets you open and view them without special software. QuickWave makes it easy to share video clips with law enforcement and

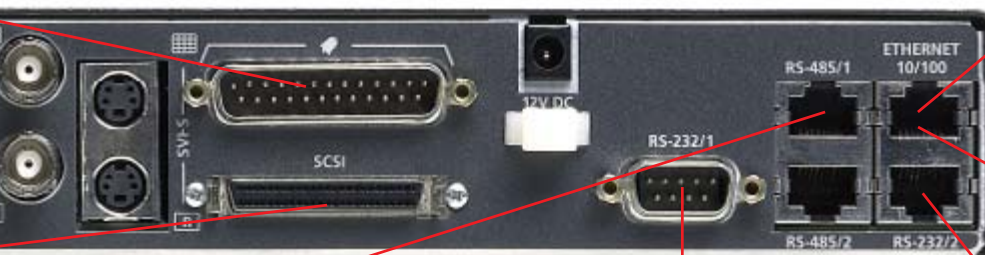
others. A security watermark ensures the recordings haven't been altered.

With WaveReader's WaveStudio feature, you can capture an image and then increase or decrease contrast, adjust brightness, adjust color hue and saturation, remove noise, sharpen lines and bring out detail in dark areas. You can enhance the whole image or only a portion, like a doorway or a face.

## Share images with QuickWave and enhance images with WaveStudio

### WaveReader features:

- **Supports up to 20 users at a time**
- **Intuitive operation**  
*Use familiar VCR-like playback controls to find just the image you want.*
- **Importable/exportable address book**  
*Log up to 10,000 addresses*
- **Select a screen preference**  
*View one camera at a time, or view multiple cameras in 4-way or 16-way formats.*
- **Multi-level password control**
- **Remote camera control**  
*Control PTZ camera functions with a keypad and mouse*
- **Remote programming, setup save and unit cloning**



### View images from a PC

Connect the DVMRe-CT to your local area or wide area network to watch live or recorded video from a PC. Remote software upgrade via flash over Ethernet.

### New! PTZ control from a PC

You can control CyberDome or other leading pan/tilt/zoom cameras connected to the DVMRe-CT using a networked PC.

### New! Capture ATM/POS text

Now you can search video by any text appearing on a cash register or ATM receipt

### Remote control

Use RS-485 connections to control up to 31 DVMRe-CT units with one keypad, or any combination of keypads and recorders—up to 32 devices

### View images over phone lines

You can connect the DVMRe-CT to a modem and call up live or recorded images from a PC over standard phone lines.



# New ways to search and store your recordings

## Improved search capabilities find critical clips fast

Search menus on the new DVMRe-CT are more intuitive and powerful than ever. Improved search filters can now search on events, with a provision for future search on activity.

The Disk Analysis Screen features easy-to-analyze color-coded bars providing per-camera data of events, alarms, activity, video loss and more. Using this screen, you can instantly go to any time/date and review camera information for that period.

## Search recordings for transaction text

Financial institutions can reduce ATM fraud and Regulation E claims with the DVMRe-CT. It can capture all text that appears on an ATM receipt and associate it with the correct video. You can search for video using the ATM transaction sequence number or any other text that appears on the customer receipt.

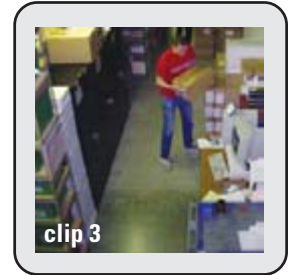
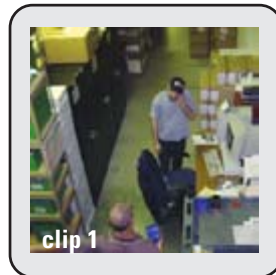
The DVMRe-CT can also help retail establishments reduce costly inventory shrinkage. That's because it has a POS interface that can capture receipt text and associate it with the correct video. You can search for video using receipt text like "No Sale," "Void," "Pepsi" or "Levis."

## Search recordings for motion in a specific area

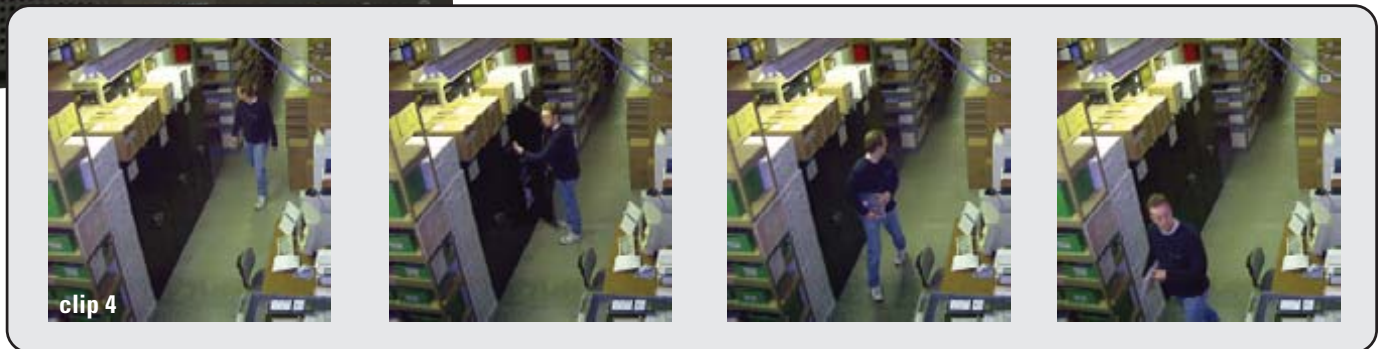
The DVMRe-CT now features motion search. When reviewing recorded video, you can define a target grid in a camera's view and then initiate a search. The DVMRe-CT will display a list of clips containing motion in the defined area.

Press play repeatedly until you find the clip with the information you're looking for.

Motion search makes it easy to determine the time an object moved and who moved it.



Each time you press play, the DVMRe-CT displays a new clip with motion in the target area.



Press play repeatedly until you find the clip—and the information—you want.

The DVMRe-CT records video to an internal 40-, 80-, 160- or 320-GB hard drive. You can archive months of recordings without a room full of videotapes. Recording can even be scheduled by date and time. And you'll save precious time each time you search your recordings.

Choose the hard drive size that best fits your recording needs and your budget. For extended storage, the DVMRe-CT interfaces to AIT, DAT, CD writers, RAID units and the Calibur DVSe.

## End videotape management hassles

Record Mode		Standard Resolution	Medium Resolution	High Resolution
960 hrs	.125 pps	592 days	370 days	269 days
168 hrs	1 pps	103 days	65 days	47 days
72 hrs	2 pps	44 days	27 days	20 days
48 hrs	3 pps	29 days	18 days	13 days
24 hrs	5 pps	15 days	9 days	7 days
12 hrs	10 pps	7.4 days	4.6 days	3.3 days
2 hrs	30 pps	2.5 days	1.5 days	1.1 days
2 hrs+	60 pps	30 hours	19 hours	13 hours

Record time, 80-GB hard drive

Record Mode		Standard Resolution	Medium Resolution	High Resolution
960 hrs	.125 pps	2370 days	1481 days	1077 days
168 hrs	1 pps	414 days	259 days	188 days
72 hrs	2 pps	177 days	111 days	80 days
48 hrs	3 pps	118 days	74 days	53 days
24 hrs	5 pps	59 days	37 days	26 days
12 hrs	10 pps	29 days	18 days	13 days
2 hrs	30 pps	9.9 days	6.2 days	4.5 days
2 hrs+	60 pps	4.9 days	3.1 days	2.2 days

Record time, 320-GB hard drive

The Calibur Digital Video Storage System (DVSe) is an inexpensive disk array designed exclusively for the CCTV industry. It connects to the DVMRe-CT with a standard SCSI cable. The chassis fits in three units (3U) of rack space and holds up to eight hard drives.

Upgrading storage capacity is easy—just turn the DVSe off and plug in more hard drives. The DVSe self-configures every time it powers up. LCD and LED lights indicate how many hard drives are installed and operating, along with the total disk storage capacity.

- *Archive months—even years—of continuous recordings*
- *Transfer selected clips from your DVMRe-CT*
- *Retrieve and play back recordings using DVMRe-CT search and play functions*
- *Upgrade a DVSe with fewer than eight hard drives simply by adding additional drives*
- *Fits in three units of rack space*
- *Self-configures at power-up each time hard drives are added*
- *LCD and LED display*
- *Search for motion directly from the online DVSe*

## Calibur DVSe expands total storage beyond one terabyte



Learn more about the Calibur DVSe. Visit the **Digital Recording** section of the online catalog at [www.kalatel.com](http://www.kalatel.com)



The DVSe holds up to eight hard drives, increasing total storage beyond one terabyte.

Record Mode		Standard Resolution	Medium Resolution	High Resolution
960 hrs	.125 pps	9481 days	5925 days	4309 days
168 hrs	1 pps	1659 days	1037 days	754 days
72 hrs	2 pps	711 days	444 days	323 days
48 hrs	3 pps	474 days	296 days	215 days
24 hrs	5 pps	237 days	148 days	107 days
12 NRT	10 pps	118 days	74 days	53 days
2 hrs	30 pps	59 days	37 days	26 days

DVMRe-CT record capacity when used with DVSe with eight 160-GB drives.

## New eZ series DVMRe-CT—no programming required



1. Connect cameras
2. Connect monitors
3. Plug it in

Our new eZ series DVMRe-CT models are an economical alternative for less complex recording applications.

The eZ models include many powerful DVMRe-CT features, like video motion detection, macros and live look-in through your network.

But simplicity is what sets the eZ models apart. Global record settings in time-lapse, event or activity modes eliminate the need to program record speeds for multiple cameras.

Our exclusive AutoInstall™ feature makes it easy to set up your system. When you plug in your eZ, it configures itself and stands by in event mode. If any activity takes place in a camera's field of view, the eZ begins recording the action at one picture per second—even faster if all camera input ports aren't being used.

Push the play button and it immediately plays back the last recording.

## Choose the DVMRe-CT that's right for your system



Download DVMRe-CT and DVMRe-eZ spec sheets at [www.kalatel.com](http://www.kalatel.com)

Feature	DVMRe-CT	DVMRe-eZ
Motion search	●	
Dual digital monitors	●	
Per-camera mode setting of time-lapse, event or both	●	●
Per-camera setting of time-lapse record rate	●	
Per-camera setting of event record rate	●	
Per-camera setting of activity record rate	●	
Per-camera setting of record quality	●	
Sub-macros	●	
Associated multicamera display upon alarm	●	
Alarm input configuration NO/NC	programmable	fixed N/O
Relay output configuration NO/NC	programmable	fixed N/O
Alarm buzzer setup	●	
Video loss action setup	●	
Camera AGC setup	●	●
Record overwrite mode	programmable	fixed: overwrite
Time display format	12/24-hour	12-hour
Master/slave modes	programmable	slave
Sequencing menu	●	
System view menus	●	
Quick install menus	●	
Motion detection enabled as default (activity)	●	●
Motion indicators default off	●	●
Activity linked to events default on	●	●
Time-lapse + event set as default record mode	●	●
Pre-event record set at 2 seconds default	●	●
Covert camera protection	●	●
Timed start of macros	●	
WaveReader file extraction directly from DVSe	●	●
POS interface	●	●
ATM interface	●	



**GE Interlogix**  
Calibur

**Mailing Address**  
4575 SW Research Way Suite 250  
Corvallis, OR, USA 97333  
[www.kalatel.com](http://www.kalatel.com)

**Americas**  
toll-free 800-469-1676  
tel 541-754-9133  
fax 541-754-7162

**Asia**  
tel 852-2907-8108  
fax 852-2142-5063

**Australia**  
tel 61-3-9259-4700  
fax 61-3-9259-4799

**Europe**  
tel 32-2-725-11-20  
fax 32-2-721-86-13