



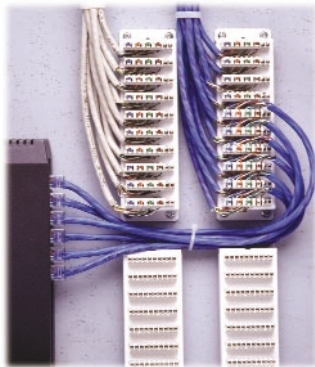
Home Wiring Network Enclosure

Specifications

Surface Mount Dimensions:	765mmH x 483mmW x 92mmD
Flush Mount Dimensions:	Back Box: 600mmH x 420mmW x 85mmD
	Surround & Door: 668mmH x 483mmW

The Home Wiring Network can accommodate a combination of:

Katt Cells	Max 4
Active Splitters	Max 2
4-12 Port Ethernet Hub	Max 1
4amp or 7amp battery	Max 1
NX Alarm PCB & Modules	Max 4 PCB's
Audio Rack	Max 2
240V Power Sockets	Max 3



Katt Cell - 50 Pair Connector Block

Specifications

Model	KATT IDC Connector
Dimensions:	20mm H x 31mmW x 7mmD
Wire Accommodation:	<1.4mm max OD - Accepts 26-22 AWG solid or stranded wires
Wire termination Type:	Insulation Displacement (Gas Tight)
Resistance Insulation:	Better than 100MW
Termination:	<0.5mW (<500mW) (Typical) <5.0mW (Guaranteed)



Hills Active Entertainment Splitter

Specifications

Model	Home Automation Distribution Splitter 3 x RF inputs, 6 x RF Outputs, Infra Red Engine
Frequency Range:	40MHz - 860MHz
Gain:	12dB FTA input port - 9dB CATV and auxiliary port
Input / Output Impedance:	75_
Return Loss:	> 15dB typ.
Port to Port Isolation:	> 15dB
Maximum Output Level:	100dB_V (DIN 45004, IM52dB; each port)
Power:	12V / 500mA Plug Pack (unregulated)



Hills 4 Channel Entertainment A/V Modulator

Specifications

Model	Home Automation 4-Channel AV Modulator Converts up to 4 video signals to TV channels Infrared Control Emitter Outputs
Frequency Range:	520MHz - 820MHz (CH27-CH69), each channel independently programmable
Output Level:	75dB_V
Input / Output Impedance:	75_
Return Loss:	> 15dB typ.
Power:	12V / 500mA Plug Pack (unregulated)

Distributed by:

