

Electrical Solutions Guide





We've grown up together

With so many exciting decisions to be made, designing the electrical system for your home is often the last thing on the mind of the new homeowner or renovator. While you can be assured that your electrical contractor will provide all the essential services, they may not include your lifestyle requirements in their plan. With a little foresight and PDL's "Electrical Solutions Guide" you and your electrical contractor can provide for all your electrical requirements today and into the future.

CONTENTS

Introduction	2-3
The Safe Home	4-5
The Comfortable Home	6-7
The Energy Efficient Home	8-9
The Futuristic Home	10-11
Heating Calculations	12
Product Selection Guide	13-23
PDL Electrical Solutions Guide Workbook Introduction	24-25
Kitchen	26-27
Bathroom/En Suite	28-29
Living Room	30-31
Dining Room	32-33
Bedroom	34-35
Office/Study	36-37
Hallway/Stairway	38-39
Outside	40-41
Laundry	42-43
Garage/Workshop	44-45

INTRODUCTION



Welcome to the PDL “Electrical Solutions Guide”. We hope you’ll find it informative and inspirational in designing the electrical system best suited to your home, family and lifestyle.

PDL encourages you to work closely with your electrical contractor to ensure an electrical installation that meets your lifestyle requirements and provides a safe, comfortable and energy efficient home for you and your family.

Considering the future

While your electrical budget may be restricted, it pays to provide for your family’s future requirements at the outset. Providing for them later will be considerably more expensive and inconvenient.

- You may want to rearrange the furniture in your living area, but find the television or audio system is on another side of the room to power, audio and aerial outlets. To avoid unsightly leads, plan for more than one furniture layout at the outset.
- If any of your family have disabilities or are elderly, consider positioning switches and socket outlets to best cater for their requirements.
- You may not own it now, but consider what electrical appliances you want in the future and where they would be located.

Starting out

When first approaching your electrical plan, consider these basic tips.

- Utilising different colours and plate finishes can change the whole look of your home’s electrical fitout.
- When selecting your socket outlets, try to be consistent with orientation throughout your home, i.e. vertical or horizontal.
- Position light switches conveniently when entering or leaving rooms, and when locating light switches beside doorways take care to note the way the door swings so your switch is not obstructed when the door is open.



PIL Strato 800 Series™
Expand your horizons.



PIL Modena 800 Series™
Contemporary, innovative, flexible.



PIL 600 Series
Designed for today, prepared for tomorrow.

With a little planning you can provide for all your electrical requirements now and in the future.



- Consider light dimmers for those areas of the home where it may be desirable to create different moods with lower light settings.
- Switches don't always have to be next to the appliance they are controlling and may be better placed in the most convenient and accessible location.

Your electrical contractor will also offer advice and suggestions to further customise your installation. In many instances homeowners deal with builders or architects and do not speak to the electrical contractor directly. You should, however, discuss your particular needs with whoever is overseeing the electrical installation.

THE SAFE HOME



With any electrical installation one of the first considerations should be safety, protection of your possessions and, most importantly, your family. PDL offer a comprehensive range of products to suit most safety applications.

ESSENTIAL SAFETY PRODUCTS FOR YOUR HOME:

Sockets with safety shutters . PIR Light Sensors . Smoke Detectors . Surge Protection . RCDs . Waterproof Switches .

Take the shock out of your home

From time to time we are all unconsciously careless around electricity. RCDs (Residual Current Devices) are specifically designed to minimise the risk of fatal electric shock when using electricity around the home.

In the workshop and outdoors, dampness, faulty wiring, fraying cords and other hazards could contribute to a potentially lethal situation. You could be in danger when using power tools, extension leads, electric barbecues, electric lawnmowers, temporary party lighting, pool vacuums, filters, spas, pool lights and any other outdoor electrical equipment. RCDs offer personal protection against electrocution from live to earth faults.

Installing an RCD could mean the difference between life and death.

Arresting that surge

All electrical circuits are, from time to time, subject to power surges of varying degrees. Depending on the type, duration and size of these surges, irreparable damage can be done to sensitive electronic equipment such as computers, TVs, videos, DVD players etc. PDL recommend the use of coarse or medium surge protection on all circuits in the distribution board with additional fine surge protection on selected circuits.

Fine surge and transient protection can be achieved using PDL's surge protected switched socket (695SP). This unit protects computers and other valuable electronic equipment and appliances from surges (excluding direct lightning strikes) occurring inside or outside the building.



WHERE THERE'S SMOKE:

Smoke alarms are essential to every home, providing an early warning of fire and minimising the chance of lives being lost and property being damaged.

Smoke and toxic fumes do not wake people, rather they force people deeper into unconsciousness.

Whilst any smoke detector is better than none, it is a fact that battery powered smoke detectors are easily neglected. If their batteries are not replaced regularly or when the low battery indicator sounds, they become ineffectual, offering no protection at all.

The PDL SD100 and SD200 offer dual power supplies, mains with battery backup thereby ensuring maximum protection. Smoke alarms are an investment in safety that every home should make. The stakes are high, while the investment is low.

Innovative Safety Design Features

SHUTTERED SOCKETS:

All PDL sockets feature inbuilt shutters which effectively close off the socket pinholes when a plug is removed. This additional protection provides peace of mind for parents with toddlers who may try inserting a foreign object into the socket holes.

WATERPROOF SWITCHES:

PDL's innovative waterproof switches provide further protection from electric shock in case a family member touches a switch using wet hands. These products are ideally suited for light and appliance switches in 'wet' areas such as kitchens, bathrooms, en suites and laundries.

FRONT LOADING PRODUCTS:

Front loading modules cannot be forced out of the plate back into the wall cavity by frontal impact, preventing accidental access to live wires.

LIGHTING UP THE NIGHT:

PIR Light Sensors offer convenience and safety to any home. They light up the night, ensuring your family's safety when returning home after dark, and are an excellent deterrent to criminal behaviour. A further advantage is the energy savings achieved by only turning lights on when they are required.

THE COMFORTABLE HOME



Warm and dry in winter, cool and calm in summer – sounds like a perfect home environment. Your electrical system can go a long way to creating a home that is comfortable and convenient to live in. Even the most simple considerations such as placement of light switches and sockets can make your home easier to live in. After all it is inconvenient to have to cross a room or stretch over furniture just to turn on a light or appliance. A little prior planning goes a long way.

WHAT TO CONSIDER FOR YOUR HOME:
Heating . Ventilation . Dimmers . Towel Rails .

The warmth of summer all year round

Heating is one of the most important aspects in ensuring your home will be comfortable during the long, cold winter months. A variety of heater models are available to suit a wide range of applications, budgets and individual requirements.

Thermostat models are designed to keep rooms at a constant temperature. Thermosafe heaters are designed to heat individual rooms or areas, saving you money on your electricity bill by not unnecessarily heating unused areas.

A little luxury in the bathroom

How many times have you stepped out of a hot shower into a freezing cold bathroom? Installing a bathroom heater can take the chill out of winter mornings by keeping your bathroom at a constantly comfortable temperature.

Additionally, heated towel rails provide the comfort and convenience of warm, dry towels whenever you need them.





SETTING THE MOOD:
Dimmers are a great way to lower light levels in particular rooms to create the right mood for dinner parties, in the bedroom or while watching a DVD on your home theatre system. An added advantage is the lower energy consumption while the lights are dimmed.

Clearing the air

Ventilation in your kitchen and bathrooms is essential in most homes today. Musty, stagnant air, caused by dampness, smoking, animals, cooking odours or just a lack of ventilation produces an unpleasant environment and in extreme cases can affect your family's health.

Most homes have a range hood installed above the cooking area. While this is great for vapours and odours from the cook top, it does not effectively remove them from other parts of the

kitchen. Installing an additional exhaust fan in your kitchen will help remove these odours and vapours.

Condensation, particularly in bathrooms, can cause widespread problems, from mould to peeling wallpaper and even structural damage through wood rot and damp.

Exhaust fans allow you to keep the windows closed to keep in the warmth and reduce drafts, while removing stale air and condensation.

THE ENERGY EFFICIENT HOME



In this day and age with increased pressure on our energy resources it is in all of our interests to consider the options to use energy more efficiently in our homes. Not only will this relieve some of the pressure on our resources but in the long term it will save you money on your power bill – something we all appreciate.

ESSENTIAL ENERGY SAVERS FOR YOUR HOME:
Heating and Ventilation . PIR Sensors . Dimmers .
Sunset Switches . Timers .



Keeping cosy and the costs down

One of the biggest costs in any home is the heating bill, particularly during those cold winter months. A flush mount, thermostat-controlled wall heater is an excellent way to heat individual rooms by automatically turning off the heater when the optimum temperature has been reached, reducing energy wastage.

Heating rooms or areas individually is an excellent way of increasing your energy efficiency overall, especially if there are areas of your home that are not often used. These could include rumpus rooms, guest rooms and formal entertainment areas. See page 12 for our quick reference guide on calculating your home's heating requirements. Another way of heating efficiently that's often overlooked is venting heated air from one room to another. An in-line exhaust fan can be installed to heat an additional room with the hot air that rises and becomes trapped near the ceiling space.

Turning off the lights – automatically

How often have you walked around your home turning off lights that have accidentally been left on by other members of the family? Installing PIR sensor switches in key locations will turn lights off automatically if no one is present for preselected periods of time. Both ceiling and wall mount versions are available for your convenience.



Turning the lights off in the daylight

One common source of energy wastage occurs when lights (particularly external) are left on during the day. While many external PIR sensors have a built-in daylight or sunset switch, this is not effective on bulkhead and other light types that do not have this feature. The installation of a single sunset switch can overcome this by disconnecting these circuits during the day, even if the light switch is left on.



JUST ON TIME

Timers are a great way to ensure you only use energy when you need it. Consider timers for underfloor heating or other high-load applications where considerable savings can be made. A timer can turn them on at night for example, when tariffs are low. Timers are also ideal in the bathroom when you want a fan to continue operating for a preset period of time after the light is turned off.

THE FUTURISTIC HOME



The homes of the future bear little resemblance to the traditional homes of yesterday, and electronic systems have kept pace with these changes. New technologies such as computers, satellite TV, home theatre, electronic games, faxes and the internet have homeowners demanding more and more from their services in every room in the home. VDI (Voice, Data, Image) systems are now available that deliver a broad number of customised services throughout your home.

WHAT TO CONSIDER FOR YOUR HOME:
VDI Systems . Security . Automation .



Why choose a VDI system?

VDI systems allow you to route Voice (telephone), Data (computers, printers etc) and Imaging (TV, video, security cameras) signals from one central point in your home to any room connected to the VDI system. The central hub allows you to easily change which room each signal is going to through the use of a simple patch system. For instance, you could have a phone and TV set up in the bedroom one day and the next have it set up for a computer and a phone.

Distribution

Not only can you route signals to different rooms, but you can also send them to multiple outlets around the home at the same time. An incoming phone can be sent to multiple rooms, a DVD

movie can be viewed on several TVs at the same time, computers in different rooms can all be networked and access the internet as well as share a common printer if this is your requirement.

Ready for the future

Many VDI systems require you to plan out the individual location of TVs, phones and computers before you start wiring, as they need specific connectors and cable for each outlet. By using proprietary cable, and unique LexCom connectors, the LexCom Home Network system allows you to easily send all different types of signal down the same cable and have them available at any outlet in your home, catering for all your requirements now and in the future.

Total control

Control and flexibility is the key to a successful VDI system. With the LexCom Home Network you have complete control over all your Voice, Data and Imaging needs.

Get smart with Intelligent Home Control

Imagine having the ability to turn lights on or off automatically, remotely water the garden, and have high energy usage devices such as heaters and towel rails turn on automatically only during low tariff times. All this is possible with a Zelio Home Control System.

Zelio Home Control

Simply Smart

Zelio provides a central controller that 'manages' the electrical circuits in your home, making them work to your requirements.

You could come home to a brightly lit home with the spa pool ready and waiting after a hard day at work. Set the scene and adjust lighting levels for multiple rooms from a single switch.



Improve security by interfacing your security system with Zelio so that when the alarm activates, the lights are automatically turned on as well.

Zelio Home Control is the latest technology to add comfort, safety and energy efficiency to your electrical installation.

For further details either ask for the Zelio Home Brochure or ask your electrical contractor how Zelio Home Control can benefit you today.

Allowing for future expansion

Even if you will not be using the services immediately it is recommended you consider what your needs may be in the future. Installation of the cable for VDI, security, audio/home theatre and automation at the outset will be a lot more cost-effective than at a later date, even if it is not connected immediately. When choosing your VDI system, ensure that it can also be expanded to meet your future needs. Consider also where electronic devices will be located both now and at a later date, as additional cable installation once your home is completed can be expensive and disruptive.

HEATING YOUR HOME

How to warm your home to the right temperature for your family very much depends on how hot you like it and the dynamics and design of your home. It's not an exact science, but to help ensure you have adequate heating we have included some quick reference heating tables and a guide on how to calculate the heating requirements for your home.

To calculate the heating requirement for each room, use the formula below as a guide. Figures are calculated on a minimum requirement of 44 Watts per cubic metre but are subject to local climate conditions.

$$\text{Length} \times \text{width} \times \text{height (all in metres)} \times 44 = \text{Heat Requirement (in Watts)}$$

This heating requirement then needs to take into account other factors in the room.

Different rooms require different amounts of heat. Multiply your heating requirement by the following figures to adjust them to the room's function.

Lounges, Living Areas and Offices	1.5
Bedrooms and Halls	1.2
Other areas	0.8

If your room has large windows or is not fully insulated (ceiling only), add a further 10%. Add 20% if it is not insulated at all.

Once you know your room's heating requirement you can calculate how many heaters or units you will need in that room to maintain a comfortable temperature.

Quick Reference Tables

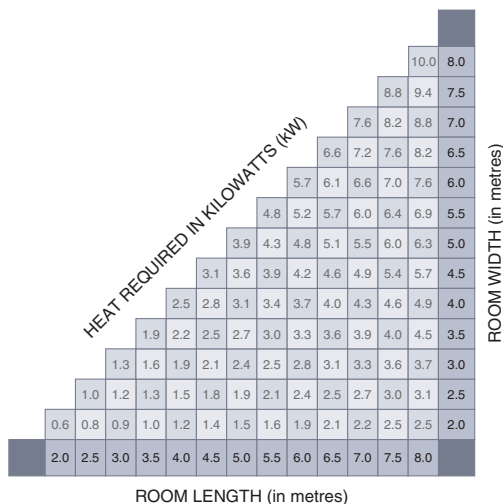
For quick reference, use the tables below to calculate the wattage required to heat a room. Take the approximate room dimensions (length and width) and look across the column and row – where they meet gives you the wattage.

For example, a bedroom with a floor area of 5.0m x 3.0m, and a ceiling height of 2.4m, will require 1.9kW to heat it sufficiently.

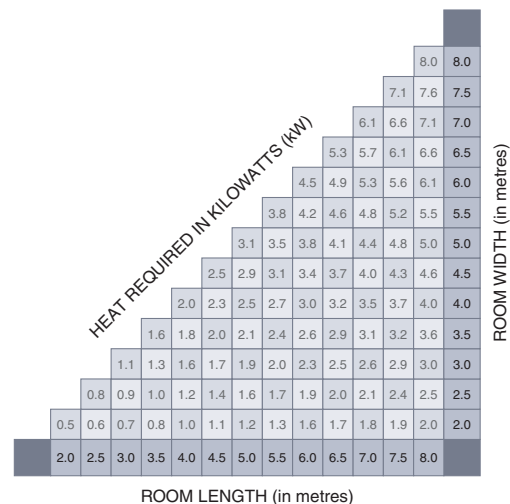
Assuming:

- Standard ceiling height of 2.4m
- Standard insulation (add 20% if not)
- Standard window size (add 10% if not)

LOUNGES, LIVING AREAS AND OFFICES



BEDROOMS AND HALLWAYS



PDL PRODUCT SELECTION GUIDE

ASSEMBLED PRODUCTS

STRATO

Colour Option

 Brushed Aluminium



S881

1 GANG LARGE SINGLE POLE 2 WAY SWITCH

OVERALL DIMENSIONS:
124mm x 90mm x 5mm
(W x H x D)



S882

2 GANG MEDIUM SINGLE POLE 2 WAY SWITCH

OVERALL DIMENSIONS:
124mm x 85mm x 5mm
(W x H x D)



S883

3 GANG STANDARD SINGLE POLE 2 WAY SWITCH

OVERALL DIMENSIONS:
124mm x 85mm x 5mm
(W x H x D)



S894

SINGLE SWITCHED HORIZONTAL SOCKET

OVERALL DIMENSIONS:
124mm x 85mm x 5mm
(W x H x D)











S895A

DOUBLE HORIZONTAL INTEGRALLY SWITCHED SOCKET

OVERALL DIMENSIONS:
124mm x 85mm x 5mm
(W x H x D)

MODENA

Colour Options

 Black  Red
 White  Champagne
 Charcoal  Gunmetal
 Blue  Platinum
 Chrome



881

1 GANG LARGE SINGLE POLE 2 WAY SWITCH

OVERALL DIMENSIONS:
124mm x 85mm x 9mm
(W x H x D)



882

2 GANG MEDIUM SINGLE POLE 2 WAY SWITCH

OVERALL DIMENSIONS:
124mm x 85mm x 9mm
(W x H x D)



883

3 GANG STANDARD SINGLE POLE 2 WAY SWITCH

OVERALL DIMENSIONS:
124mm x 85mm x 9mm
(W x H x D)



894

SINGLE SWITCHED HORIZONTAL SOCKET

OVERALL DIMENSIONS:
124mm x 85mm x 9mm
(W x H x D)



895A

DOUBLE HORIZONTAL INTEGRALLY SWITCHED SOCKET

OVERALL DIMENSIONS:
124mm x 85mm x 9mm
(W x H x D)



800 SERIES

800 SERIES MODULES



891

SINGLE SWITCHED VERTICAL SOCKET

OVERALL DIMENSIONS:
85mm x 124mm x 9mm
(W x H x D)



892A

DOUBLE VERTICAL INTEGRALLY SWITCHED SOCKET

OVERALL DIMENSIONS:
85mm x 124mm x 9mm
(W x H x D)

STRATO & MODENA GRID PLATES

Module Capacity	Standard	Double
S1 (half standard)	6 modules	12 modules
S2 (standard)	3 modules	6 modules
S3 (medium)	2 modules	4 modules
S4 (extended)	1 module ⁽¹⁾	2 modules ⁽²⁾
S6 (large)	1 module	2 modules

(1) leaves an S2 size gap

(2) 1 per aperture, each leaving 1 x S2 or 2 x S1 gap



S800GPS

STANDARD STRATO GRID & SURROUND

OVERALL DIMENSIONS:
123mm x 80mm (W x H)

 Brushed Aluminium



S800GPS2V

DOUBLE VERTICAL STRATO GRID & SURROUND

OVERALL DIMENSIONS:
123mm x 128mm (W x H)

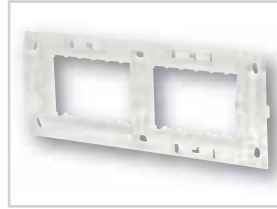
 Brushed Aluminium



800G

STANDARD MODENA GRID PLATE

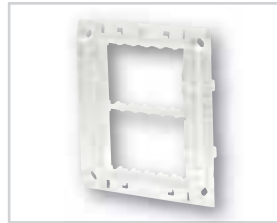
OVERALL DIMENSIONS:
123mm x 80mm (W x H)



800G2H

DOUBLE HORIZONTAL MODENA GRID PLATE

OVERALL DIMENSIONS:
213mm x 80mm (W x H)



800G2V

DOUBLE VERTICAL MODENA GRID PLATE

OVERALL DIMENSIONS:
123mm x 128mm (W x H)

SOCKET OUTLET MODULES

Colour Options

 Black
 White



894M

SINGLE SWITCHED HORIZONTAL SOCKET OUTLET 10A

Module Size: S6



891MA

SINGLE INTEGRALLY SWITCHED VERTICAL SOCKET OUTLET 10A

Module Size: S4
No neon option available



892MA

DOUBLE INTEGRALLY SWITCHED VERTICAL SOCKET OUTLET 10A

Module Size: S6



894MA

SINGLE INTEGRALLY SWITCHED HORIZONTAL SOCKET OUTLET 10A

Module Size: S4
No neon option available



895MA

DOUBLE INTEGRALLY SWITCHED HORIZONTAL SOCKET OUTLET 10A

Module Size: S6

800 SERIES

SWITCH MODULES



860M16

**HALF-STANDARD
POLE ONE WAY
SWITCH MODULE**

Module Size: S1

860M16P Press Mech (icon)
860M16PB Press Mech (blank)



861M16

**HALF-STANDARD
POLE TWO WAY
SWITCH MODULE**

Module Size: S1

No neon option available



881M16S

**STANDARD SINGLE
POLE TWO WAY
SWITCH MODULE**

Module Size: S2

881M16SP Press Mech (icon)
881M16SPB Press Mech (blank)



882M10N

**STANDARD DOUBLE
POLE SWITCH
MODULE WITH NEON**

Module Size: S2

Includes 800N240 Neon Indicator



881M16M

**MEDIUM SINGLE
POLE TWO WAY
SWITCH MODULE**

Module Size: S3



881M16V

**EXTENDED SINGLE
POLE TWO WAY
SWITCH MODULE**

Module Size: S4



881M16L

**LARGE SINGLE POLE
TWO WAY
SWITCH MODULE**

Module Size: S6

PRINTED MECHANISM ICONS (AVAILABLE IN STANDARD (S2) AND HALF STANDARD (S1) MODULE SIZES)

	Aircon		Hood
	Bell (Momentary)		HWS
	Dishwasher		Light
	Fan		Microwave
	Fridge		Mirror
	Heat		On/Off
	Hob (32A switches only)		Outside
	Press (Momentary)		Spa
	Pump		Wash
	Range/Oven (32A switches only)		Waste
	Sensor		



880TPB1

**STANDARD SINGLE
PUSH BUTTON
SWITCH MODULE**

Module Size: S2

Internal Blue LED Indicator



880TPB2

**STANDARD DOUBLE
PUSH BUTTON
SWITCH MODULE**

Module Size: S2

Internal Blue LED Indicator



800 SERIES

MODULES



881M32SN

STANDARD 32A SINGLE POLE 2 WAY SWITCH MODULE

Module Size: S2
Neon indicator included



824M

STANDARD SIZE TRAILING EDGE DIMMER MODULE

Module Size: S2
400W Max Load



833M

STANDARD SIZE LEADING EDGE DIMMER MODULE

Module Size: S2
300W Max Load



896RCM-30

RCD MODULE

Module Size: S6 20A RCD
Module – 30mA Trip



815MB

STANDARD SIZE BANANA BINDING POST MODULE

Module Size: S2



840MRWY

840MRGB

STANDARD SIZE TRIPLE RCA MODULES

Module Size: S2
840MRWY – Red, White, Yellow
840MRGB – Red, Green, Blue



860BM

HALF STANDARD BLANK MODULE

Module Size: S1



880BM

STANDARD BLANK MODULE

Module Size: S2



800MA

500/600 SERIES MODULE ADAPTOR

Module Size: S2
Equivalent size to standard size switch module
Adaptor accepts most 500/600 series modules

600 SERIES

MODULES – require the use of an 800MA module adaptor (S2)



687M3

3-POSITION ROTARY MODULE

0, 1, 2

687M4

4-POSITION ROTARY MODULE

0, 1, 2, 3



680TMPB

TACTILE SWITCH MODULES

Momentary contact switch, normally open



600 SERIES

SWITCH MODULES



581M16PBP

PROTRUDING PUSH
BUTTON MODULE

Button Colour Options

 Red  White



581M16PBS

SHROUDED PUSH
BUTTON MODULE

Button Colour Options

 Red 
 Green  Black



581M16PBM

MUSHROOM PUSH
BUTTON MODULE

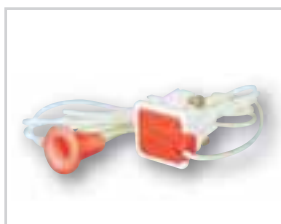
Button Colour Options

 Red 
 Green



581M16PS

PULL CORD SWITCH
MODULE



573MM

MOMENTARY CONTACT
PULL CORD SWITCH
MODULE



551M2

PERMANENT
CONNECTION MODULE

MODULES



648TM

PROGRAMMABLE TIME
DELAY MODULE

Selectable delay from 15 sec to 2 hours



100MPIR

PIR SENSOR MODULE

Adjustable light level and time delay



600RM

RELAY MODULE

N/O and N/C contacts

INDICATOR MODULES



510MN

ILLUMINATED
MODULE

Two terminals for direct connection to neon



1588M

BUZZER MODULE

Sound level: 70dB



500ID

BLANK MODULE FOR
CIRCUIT ID

Module comes with blank label for printing appliance details or circuit identification. A clear, clip-on cover protects the label.

600 SERIES

COMMUNICATIONS MODULES



617M2

BT OUTLET JACK MODULE

2 wire system



619MD

DATAPLUS CAT 6 RJ45 MODULE



LCHRJ45

LEXCOM MODULAR CONNECTION JACK

For use with LexCom Home systems



611M

LEXCOM TO 600 SERIES ADAPTOR CLIP

Used for mounting LCHRJ45 connectors into 600 Series Plates or 800MA adaptors



619MKC

DATA JACK ADAPTOR MODULE

Accepts Cat 5 RJ45 data jacks in the Keystone form from Krone, Amp, Hubbell, Suttle, HPM or Dataplus.



619MAC

DATA JACK ADAPTOR MODULE

Accepts RJ45 data jacks from AT&T and Suttle

TV/AV MODULES



528MF

COAXIAL CABLE SOCKET WITH REAR 'F' CONNECTION

528MF MARKED 'TV'
528MFI MARKED 'IN'
528MFO MARKED 'OUT'
528MFS MARKED 'SKY'
528MFV MARKED 'VIDEO'



528M

COAXIAL CABLE CONNECTION SOCKET

PAL type socket marked 'TV' Clamp terminals



615MF

'F' TYPE CONNECTOR MODULE

75 Ohm impedance



516M

BNC SOCKET

50 Ohm impedance
Solder terminals



540M

RCA AUDIO CONNECTION SOCKET

Solder type terminals

Socket Colour Options

Black (BK) White (WH)
 Yellow (YL) Red (RD)
 Green (GN) Blue (BU)



615MST

'ST' TYPE FIBRE OPTIC CONNECTOR MODULE



HEATERS AND EXHAUST FANS

THERMOSAFE FLUSH MOUNT HEATERS

220V-240V a.c., 9A, 50Hz, 1000-2000W, White only.



3303

STANDARD MODEL



3304

THERMOSTAT MODEL

EXHAUST FANS

4", 5" and 6" models available.



6X01

IN-LINE EXHAUST FANS



6X02

WALL/CEILING FANS

THERMOSAFE BATHROOM HEATERS

Two safety cutouts for added protection.



3208

2.4kW FAN FORCED HEATER

ADDITIONAL ACCESSORIES

360° SENSOR

Interior sensor. Turns lights on automatically when it senses movement.



100CF360

360° PIR SENSOR SWITCH

THERMOSAFE TOWEL RAILS



TSTR80

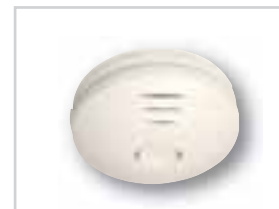
80W TOWEL RAIL

TSTR60

60W TOWEL RAIL

SMOKE DETECTORS

Ionisation or photoelectric models.



SD100

SMOKE DETECTOR - IONISATION

SD200

SMOKE DETECTOR - PHOTOELECTRIC

LEXCOM HOME NETWORK

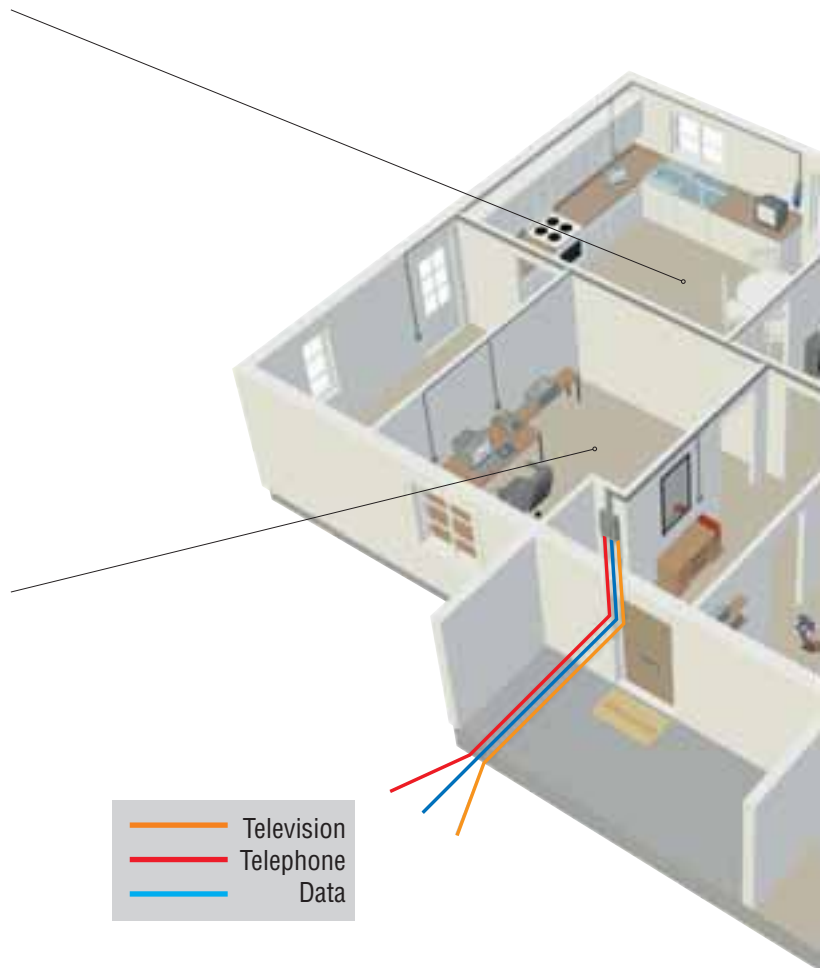
IN THE KITCHEN

With LexCom Home® Network, you'll have the infrastructure to check your email while you wait for the microwave, search the Web for a recipe that can be printed on the home office printer, watch the DVD movie playing in the lounge room, or catch the evening news.

IN THE HOME OFFICE

The ability to maintain your productivity and privacy in your home office is seamless, thanks to dedicated internet access, phone lines and a local area network.

Whether you use your home office full-time, or simply need a place to track your household finances, LexCom Home® Network gives you the infrastructure you need to take care of your business, with the same performance levels that you would expect from an office.





IN THE HOME ENTERTAINMENT ROOM

LexCom Home® Network allows you to maintain the current placement of your home entertainment and A/V equipment yet utilise them as part of a networked unit.

Whether your daughter decides to watch a movie playing from her bedroom; or you decide to watch a documentary on TV from the comfort of your favourite chair on the outside deck, your equipment will no longer anchor you to a particular room in the home.

IN THE KIDS' ROOMS

For complete peace of mind you can comfortably monitor your baby's nap from a TV in another room.

In her room, your daughter watches a movie that is playing on the lounge room DVD player. Meanwhile, your son is in his bedroom researching his homework assignment on the internet.

LexCom

The LexCom Home Network System is an integrated solution for your home's communications requirements. The LexCom cabinet, with its modular design, can be configured to suit the various needs of homes, both large and small. Simply choose modules to handle the services you require, and add further modules as required should your needs change.



Unlike other systems, LexCom's advanced high bandwidth cable allows the same type of wiring to be used for each outlet in the house – distributing data, phone, or television signals as required. This flexibility also allows the homeowner to change the services available to a particular room in a matter of seconds, for example an outlet can be changed from a TV outlet to a phone jack by simply changing one connection in the LexCom cabinet.

ZELIO HOME CONTROL

The Zelio Home Control system is the practical way to enhance your level of comfort, safety, and energy efficiency in the modern home.

The system provides automatic lighting control and dimming, intelligent heating and ventilation control, as well as timer functions to take advantage of low-cost energy tariffs. Zelio Home's 'Holiday' mode makes your home look lived in while you're away, and should the worst happen and a break-in occur, it can interface to your security system alarm panel for added protection.



SUNSET SWITCHES



Use sunset switches as a trigger for Zelio Home to activate your path lighting and turn on heating for your living areas at dusk.



SMOKE DETECTORS



Smoke alarms can be integrated with certain models of Zelio, allowing escape lighting and additional sirens to be activated once an alarm is triggered, and assisting with a safe exit.

WALL/CEILING FANS



Laundries and bathrooms can benefit from Zelio Home's ability to control exhaust fans, removing moisture from both the air and floor surfaces – important in reducing the buildup of mould and mildew in these areas.

360° PIR SENSOR SWITCHES



PIR sensors in combination with Zelio Home's timer functions can let you set up motion activated night lighting for hallways and bathrooms. The lighting can even be set to a dimmed level so as to minimise disturbance to others.



HOUSEHOLD HEATING



Maintain control of your power bill while still remaining comfortable. Zelio Home can control your household heating, from towel rails and underfloor heating, right through to controlling the times that power is available to heaters plugged into Zelio-connected wall sockets.



The core of the Zelio Home system is the Zelio Smart Relay module. These programmable modules are the brain of the system, taking input from devices such as switches, PIR sensors, or sunset switches, and controlling the connected output devices as determined by the unit's programming. These units are available in a number of sizes to suit the various needs of different houses, and are scalable via extension modules so as to allow flexibility, should your needs grow over time.



WORKBOOK SECTION



Getting started

You are now ready to apply this advice to planning the electrical system for your new home or renovation. The following section will take you through your home, room by room, giving you inspiration and advice to help you devise an electrical system that will fulfil your family's needs now and into the future.

It is a good idea to sit down with your family and work through the electrical requirements for the individual areas in your home.

The top section of each page allows you to customise the look of a room by selecting both the product range and the colour options from within that range that fit best with the rest of the décor in that area.

We have also provided a checklist which you can use to note the products you believe you will need

in that room's electrical installation. For ease of use, this checklist is broken down into areas:

- Switches and Socket Outlets, which lists all the basic items for controlling your lights and providing power via wall sockets.
- Essential Extras, which lists those items which will elevate the comfort level or functionality of the room.
- VDI Options. This contains options for handling the distribution of your telephone communications, computer data, and audio-visual signals around your home.

Not all products are listed so please see pages 13-23 for an indication of the range available.

The notes section at the bottom of each page can be used to list any other items a particular room may require.

This checklist is a great starting point and will assist your electrical contractor in determining your family's needs. Do not worry if you do not

know whether you need single or multiple way switches, these are the sort of technical decisions your electrical contractor can advise you on. Where possible, work through the checklist with your contractor so that they can go through all the options and further customise your electrical system to your needs and your budget.

Once you have completed the checklist and have decided what you want in each room, you will need to decide where to best place switches, sockets and other electrical devices. Consider making a copy of your house plans and marking

the location and codes of your electrical fittings in each room. Imagine possible layouts and uses for each room and take into account your family's future needs.

The main objective of the checklist is to ensure you get all the items you require to maximise comfort, safety and energy efficiency in your home. We hope you find it helpful in ensuring your home is fitted with an electrical system that meets your family's expectations.



KITCHEN

RECOMMENDATIONS:

Consider stainless steel, brushed bronze or polished brass cover plates to match your appliances

Utilise printed switches to identify individual circuits or appliances (see pg 15 for a list of available options)

Waterproof switches in 'wet' areas or where wet hands could come into contact with switches

Install an extra switch for the fridge in an accessible location so the fridge can be turned off without accessing the point where it is plugged in

Place the oven/stove isolation switch in an easily accessible location, i.e. pantry

4 way socket outlets (644, 641) ensure plenty of power outlets in the kitchen area, great for all those benchtop appliances

For areas with limited mounting space, slim worktop switched sockets are an ideal solution

Use double unswitched sockets (693/2) where appliances such as dishwashers and waste disposals need to be controlled on different circuits



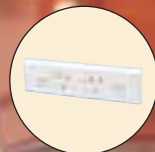
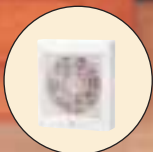
TIPS:

Be careful when placing smoke detectors in kitchens as smoke or fumes from cooking can unnecessarily trigger the smoke alarm.



THINGS TO CONSIDER:

- Espresso machine
- Sandwich maker
- Electric wok
- Rice cooker
- Toaster
- Jug
- Blender
- Oven
- Range hood
- Microwave
- Phone
- TV or stereo



CHOOSE YOUR OWN STYLE

Make your selection by ticking one of the 3 style options, then tick your preferred colour option



600 SERIES



COVERPLATE COLOUR OPTIONS:

- White
- Black
- Polished Brass
- Brushed Bronze
- Stainless Steel



MODULE COLOUR OPTIONS:

- White
- Black



MODENA 800



COVERPLATE COLOUR OPTIONS:

- White
- Black
- Charcoal
- Blue
- Chrome
- Red
- Champagne
- Gunmetal
- Platinum



MODULE COLOUR OPTIONS:

- White
- Black



STRATO 800



COVERPLATE COLOUR OPTIONS:

- Brushed Aluminium



MODULE COLOUR OPTIONS:

- White
- Black



Now select the options that give you the flexibility you desire in your electrical installation

SWITCHES/SOCKET OUTLETS

- Multigang power points
- Light dimmers
- Timer switch
- Push button switches
- 'Symbol' switches for dedicated circuits
- Waterproof switches (600 series only)
- PIR sensor switch
- Toggle switches

ESSENTIAL EXTRAS

- Zelio Home Control System
- Fan speed controller
- Extractor fan

VDI OPTIONS

- LexCom Home Network
- Telephone outlet
- Speaker outlets
- TV outlets
- Audio outlets
- Data outlets



Notes:

BATHROOM / EN SUITE

RECOMMENDATIONS:

Waterproof switches in 'wet' areas or where wet hands could come into contact with switches

Exhaust fans to extract steam and reduce condensation and dampness

Heat bathrooms and ensuites quickly and efficiently with PDL 3208 bathroom heater

Heated towel rails provide comfort, convenience and warm, dry towels

Timers to automatically control fans and lights

RCD sockets provide protection against electric shocks in retrofit installations
NB: It is now mandatory for all power outlets in a new home to have RCD protection



TIPS:

If possible place heated towel rails on timers to take advantage of reduced electricity rates during off-peak times.



THINGS TO CONSIDER:

- Electric shaver
- Hairdryer
- Electric toothbrush
- Heated towel rail
- Heater



CHOOSE YOUR OWN STYLE

Make your selection by ticking one of the 3 style options, then tick your preferred colour option



600 SERIES

- COVERPLATE COLOUR OPTIONS:**
- White
 - Black
 - Polished Brass
 - Brushed Bronze
 - Stainless Steel
- MODULE COLOUR OPTIONS:**
- White
 - Black



MODENA 800

- COVERPLATE COLOUR OPTIONS:**
- White
 - Black
 - Charcoal
 - Blue
 - Chrome
 - Red
 - Champagne
 - Gunmetal
 - Platinum
- MODULE COLOUR OPTIONS:**
- White
 - Black



STRATO 800

- COVERPLATE COLOUR OPTIONS:**
- Brushed Aluminium
- MODULE COLOUR OPTIONS:**
- White
 - Black



Now select the options that give you the flexibility you desire in your electrical installation



SWITCHES/SOCKET OUTLETS

- Multigang power points
- Timer switch
- Push button switches
- 'Symbol' switches for dedicated circuits
- Waterproof switches (600 Series only)
- PIR sensor switch
- Toggle switches



ESSENTIAL EXTRAS

- Zelio Home Control System
- In-wall heater
- Fan speed controller
- Wall mount surface heater
- Extractor fan



Notes:

LIVING ROOM

RECOMMENDATIONS:

Dimmers to adjust the light levels to suit different situations

Speaker wallplates for home theatre systems

Thermosafe heaters for localised temperature control

Printed switch modules for easy identification

Wall lighting with dimmer control is an excellent way to highlight pictures and paintings

Smoke detectors for early fire warning

Surge protected sockets for computers and other electronic appliances



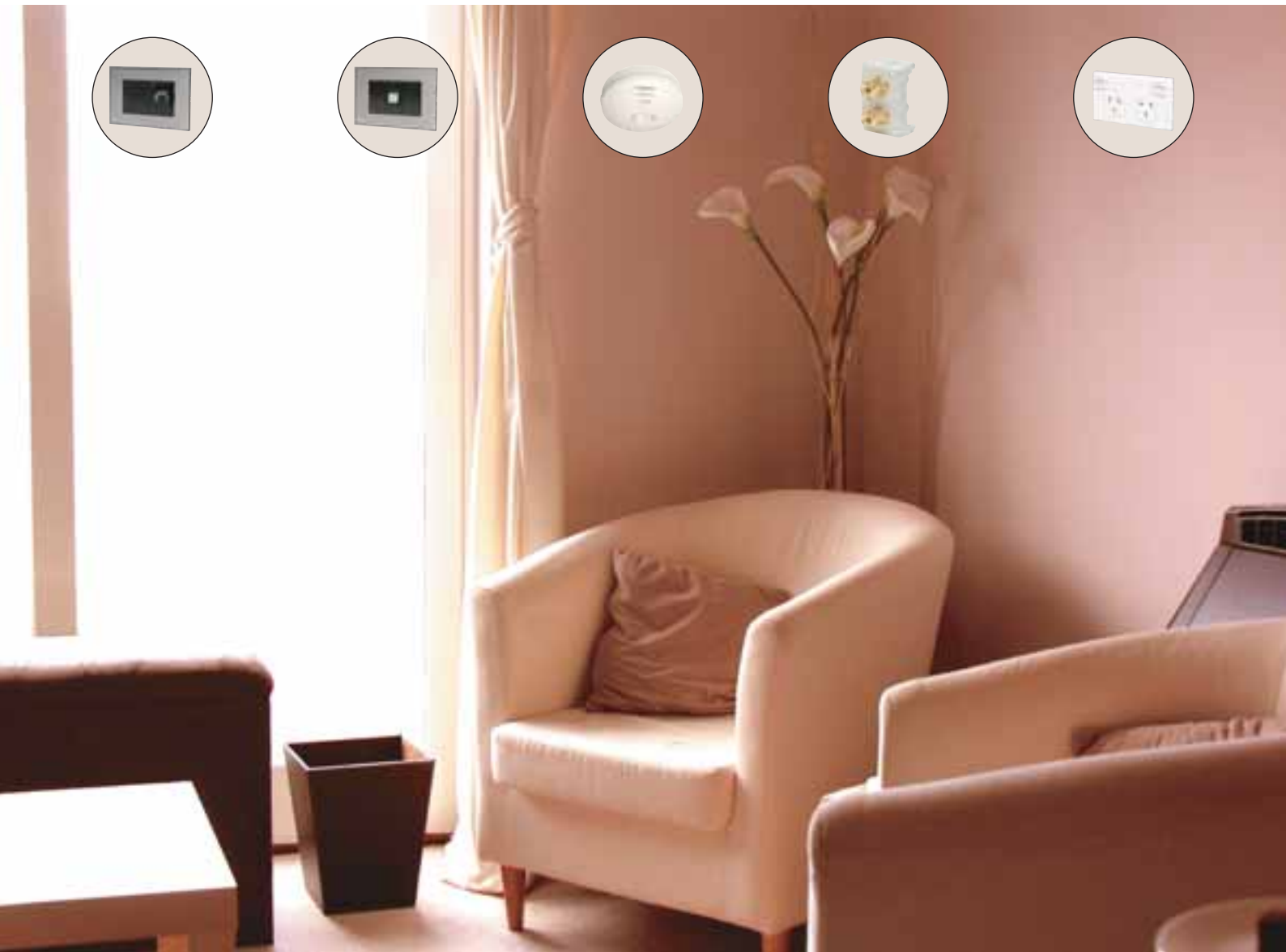
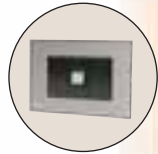
TIPS:

Strategically place socket outlets, TV outlets and stereo outlets so that furniture and appliances can be rearranged at a later date.



THINGS TO CONSIDER:

- Phone
- TV and home theatre
- Stereo
- Heating
- Computer
- Ceiling fans



CHOOSE YOUR OWN STYLE

Make your selection by ticking one of the 3 style options, then tick your preferred colour option



600 SERIES

- COVERPLATE COLOUR OPTIONS:
- White
 - Black
 - Polished Brass
 - Brushed Bronze
 - Stainless Steel

- MODULE COLOUR OPTIONS:
- White
 - Black

MODENA 800

- COVERPLATE COLOUR OPTIONS:
- White
 - Black
 - Charcoal
 - Blue
 - Chrome
 - Red
 - Champagne
 - Gunmetal
 - Platinum

- MODULE COLOUR OPTIONS:
- White
 - Black

STRATO 800

- COVERPLATE COLOUR OPTIONS:
- Brushed Aluminium

- MODULE COLOUR OPTIONS:
- White
 - Black



Now select the options that give you the flexibility you desire in your electrical installation

SWITCHES/SOCKET OUTLETS



- Multigang power points
- Light dimmers
- Timer switch
- Push button switches
- 'Symbol' switches for dedicated circuits
- PIR sensor switch
- Toggle switches

ESSENTIAL EXTRAS



- Zelio Home Control System
- In-wall heater
- Fan speed controller
- Ventilation fan
- Smoke detector

VDI OPTIONS



- LexCom Home Network
- Telephone outlet
- Speaker outlets
- TV outlets
- Audio outlets
- Data outlets

 Notes:

DINING ROOM

RECOMMENDATIONS:

Use a Cat 44A ceiling rose for pendant lights over your dining table

You may wish to work at the dining table, so ensure you have phone and data outlets nearby

Plenty of socket outlets are a must, so consider the 4 way horizontal or vertical socket outlets

If the dining room is a thoroughfare, ensure you can turn lighting on from both sides of the room. Consider printed switch modules

Place a socket outlet in a convenient location for your vacuum cleaner

If your dining room opens onto a patio, ensure a convenient location for an outside light switch



TIPS:
Utilise dimmers to create the right mood.



- THINGS TO CONSIDER:**
- Light dimmers
 - Phone
 - Sockets



CHOOSE YOUR OWN STYLE

Make your selection by ticking one of the 3 style options, then tick your preferred colour option



600 SERIES



COVERPLATE COLOUR OPTIONS:

- White
- Black
- Polished Brass
- Brushed Bronze
- Stainless Steel



MODULE COLOUR OPTIONS:

- White
- Black

MODENA 800



COVERPLATE COLOUR OPTIONS:

- White
- Black
- Charcoal
- Blue
- Chrome
- Red
- Champagne
- Gunmetal
- Platinum



MODULE COLOUR OPTIONS:

- White
- Black

STRATO 800



COVERPLATE COLOUR OPTIONS:

- Brushed Aluminium



MODULE COLOUR OPTIONS:

- White
- Black



Now select the options that give you the flexibility you desire in your electrical installation

SWITCHES/SOCKET OUTLETS



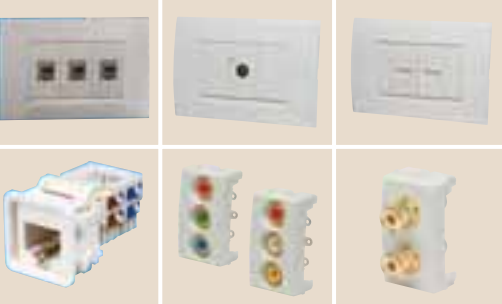
- Multigang power points
- Light dimmers
- Timer switch
- Push button switches
- 'Symbol' switches for dedicated circuits
- PIR sensor switch
- Toggle switches

ESSENTIAL EXTRAS



- Zelio Home Control System
- In-wall heater
- Fan speed controller
- Ventilation fan
- Smoke detector

VDI OPTIONS



- LexCom Home Network
- Telephone outlet
- Speaker outlets
- TV outlets
- Audio outlets
- Data outlets



Notes:

BEDROOM

RECOMMENDATIONS:

Place light switches above the bed for ease of access

Install phone outlets close to the bed

Consider 2 way switching to turn the lights on and off from different locations

Place multiple socket outlets beside the bed for bedside lamps, clocks, radios and electric blankets

Strategically place light switches so dark areas can be lit before entering them

Use a PIR sensor for your walk-in wardrobe so the light is not inadvertently left on

Smoke detectors are essential as a pre-warning of potential fires



TIPS:
Dimmers are excellent for creating the right mood in your bedroom.



THINGS TO CONSIDER:

- Phone
- Electric blanket
- Alarm clock
- Radio
- Wardrobe light



CHOOSE YOUR OWN STYLE

Make your selection by ticking one of the 3 style options, then tick your preferred colour option



600 SERIES

- COVERPLATE COLOUR OPTIONS:
- White
 - Black
 - Polished Brass
 - Brushed Bronze
 - Stainless Steel

- MODULE COLOUR OPTIONS:
- White
 - Black



MODENA 800

- COVERPLATE COLOUR OPTIONS:
- White
 - Black
 - Charcoal
 - Blue
 - Chrome
 - Red
 - Champagne
 - Gunmetal
 - Platinum

- MODULE COLOUR OPTIONS:
- White
 - Black



STRATO 800

- COVERPLATE COLOUR OPTIONS:
- Brushed Aluminium

- MODULE COLOUR OPTIONS:
- White
 - Black



Now select the options that give you the flexibility you desire in your electrical installation

SWITCHES/SOCKET OUTLETS



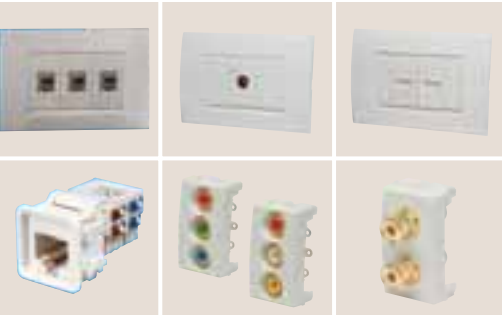
- Multigang power points
- Light dimmers
- Timer switch
- Push button switches
- 'Symbol' switches for dedicated circuits
- PIR sensor switch
- Toggle switches

ESSENTIAL EXTRAS



- Zelio Home Control System
- In-wall heater
- Fan speed controller
- Ventilation fan
- Smoke detector

VDI OPTIONS



- LexCom Home Network
- Telephone outlet
- Speaker outlets
- TV outlets
- Audio outlets
- Data outlets

Notes:

OFFICE/STUDY

RECOMMENDATIONS:

Carefully consider the positioning of phone and computer outlets.
Consider 2 or 4 way outlets where your workstation is to be located

Upgrade your switch coverplates to a metallic finish

Voltage or power fluctuations can damage your electronic equipment.
Minimise the risk by using surge protected power outlets

Don't overload your socket outlets with extension boxes. Use PDL's 4 way power points to accommodate printers, faxes, scanners and other electrical office equipment

Install PIR sensors in locations where you require the convenience of lights turning on and off automatically

A wall/ceiling mounted sensor will further increase your house's electrical efficiency

Install RCA or speaker outlets in a position that allows you to mount speakers away from your desk to reduce clutter

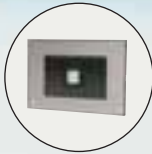


TIPS:
Install dual phone outlets to enable a connection to both your phone and computer at the same work station.



THINGS TO CONSIDER:

- Computer
- Printer
- Mobile phone charger
- Hi-fi speakers
- Desk lamp
- Kids' electronic games
- Phone/fax machine



CHOOSE YOUR OWN STYLE

Make your selection by ticking one of the 3 style options, then tick your preferred colour option



600 SERIES



COVERPLATE COLOUR OPTIONS:

- White
- Black
- Polished Brass
- Brushed Bronze
- Stainless Steel



MODULE COLOUR OPTIONS:

- White
- Black

MODENA 800



COVERPLATE COLOUR OPTIONS:

- White
- Black
- Charcoal
- Blue
- Chrome
- Red
- Champagne
- Gunmetal
- Platinum



MODULE COLOUR OPTIONS:

- White
- Black

STRATO 800



COVERPLATE COLOUR OPTIONS:

- Brushed Aluminium



MODULE COLOUR OPTIONS:

- White
- Black



Now select the options that give you the flexibility you desire in your electrical installation

SWITCHES/SOCKET OUTLETS



- Multigang power points
- Light dimmers
- Timer switch
- Push button switches
- 'Symbol' switches for dedicated circuits
- PIR sensor switch
- Toggle switches

ESSENTIAL EXTRAS



- Zelio Home Control System
- In-wall heater
- Fan speed controller
- Ventilation fan
- Smoke detector

VDI OPTIONS



- LexCom Home Network
- Telephone outlet
- Speaker outlets
- TV outlets
- Audio outlets
- Data outlets

 Notes:

HALLWAY/STAIRWAY

RECOMMENDATIONS:

If you have underfloor heating, the installation of a 24 hour timer can ensure the most energy efficient operation

To avoid accidentally switching off outside sensor lights, install hinged lid modules

Illuminated modules are great for determining if electrical circuits are on or off

Low wattage stair lights to illuminate stairs make them safer for children and the elderly at night

Position socket outlets conveniently for your vacuum cleaner



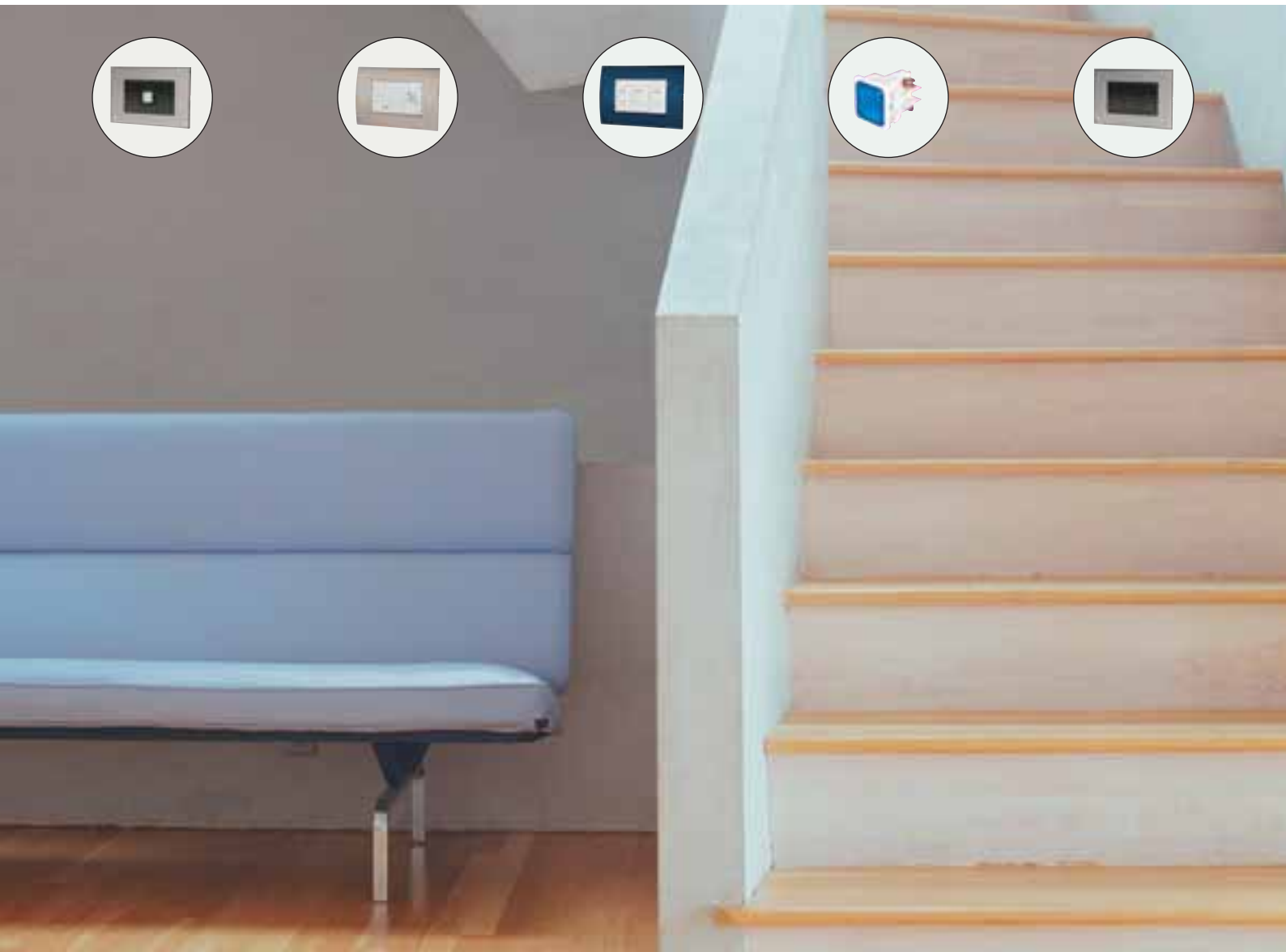
TIPS:

Installing a PIR sensor can turn the lights on automatically when you enter. Extremely convenient when you have your hands full.



THINGS TO CONSIDER:

- Stair lights
- Phone
- Door bell
- Smoke detectors
- Vacuum cleaner



CHOOSE YOUR OWN STYLE

Make your selection by ticking one of the 3 style options, then tick your preferred colour option



600 SERIES

- COVERPLATE COLOUR OPTIONS:
- White
 - Black
 - Polished Brass
 - Brushed Bronze
 - Stainless Steel

- MODULE COLOUR OPTIONS:
- White
 - Black



MODENA 800

- COVERPLATE COLOUR OPTIONS:
- White
 - Black
 - Charcoal
 - Blue
 - Chrome
 - Red
 - Champagne
 - Gunmetal
 - Platinum

- MODULE COLOUR OPTIONS:
- White
 - Black



STRATO 800

- COVERPLATE COLOUR OPTIONS:
- Brushed Aluminium

- MODULE COLOUR OPTIONS:
- White
 - Black



Now select the options that give you the flexibility you desire in your electrical installation

SWITCHES/SOCKET OUTLETS



- Multigang power points
- Light dimmers
- Timer switch
- Push button switches
- 'Symbol' switches for dedicated circuits
- PIR sensor switch
- Toggle switches

ESSENTIAL EXTRAS



- Zelio Home Control System
- In-wall heater
- Fan speed controller
- Ventilation fan
- Smoke detector

VDI OPTIONS



- LexCom Home Network
- Telephone outlet
- Speaker outlets
- TV outlets
- Audio outlets
- Data outlets

Notes:

OUTSIDE

RECOMMENDATIONS:

Install PIR sensors in entrances and to light up other access areas at night

Consider weatherproof (WP Series) sockets and switches for the convenience of switching on lights or plugging in appliances outside

Garden lights are a great way to show off your garden and light an area at night

Be sure to choose appropriate lighting. Halogen lights, floodlights and spotlights all offer different features and looks

Ensure sockets for power tool use outside are RCD protected



TIPS:

A daylight or sunset switch will ensure that outside lights are not left on during the day so you don't waste power.



THINGS TO CONSIDER:

- Electric garden tools
- Electric power tools
- Spa/swimming pool
- Garden lighting
- Barbecues



CHOOSE YOUR OWN STYLE

Make your selection by ticking one of the 3 style options, then tick your preferred colour option



600 SERIES

- COVERPLATE COLOUR OPTIONS:
- White
 - Black
 - Polished Brass
 - Brushed Bronze
 - Stainless Steel

- MODULE COLOUR OPTIONS:
- White
 - Black



MODENA 800

- COVERPLATE COLOUR OPTIONS:
- White
 - Black
 - Charcoal
 - Blue
 - Chrome
 - Red
 - Champagne
 - Gunmetal
 - Platinum

- MODULE COLOUR OPTIONS:
- White
 - Black



STRATO 800

- COVERPLATE COLOUR OPTIONS:
- Brushed Aluminium

- MODULE COLOUR OPTIONS:
- White
 - Black



Now select the options that give you the flexibility you desire in your electrical installation



SWITCHES/SOCKET OUTLETS

- Weatherproof sockets
- Timer switch
- Weatherproof switch



ESSENTIAL EXTRAS

- Zelio Home Control System
- Sensor lights
- Daylight switch
- Bulkhead lights
- Speaker outlets



Notes:

LAUNDRY

RECOMMENDATIONS:

Waterproof light switches where wet hands could come into contact with switches

4 way socket outlets to provide multiple plug points for laundry appliances

RCD protected outlets in renovation situations. It is mandatory for RCD protection of outlets in new installations

Mount socket outlet for a dryer higher up the wall if wall mounting

Architrave switches and outlets are ideal in areas with limited space, i.e. between windows and benchtops



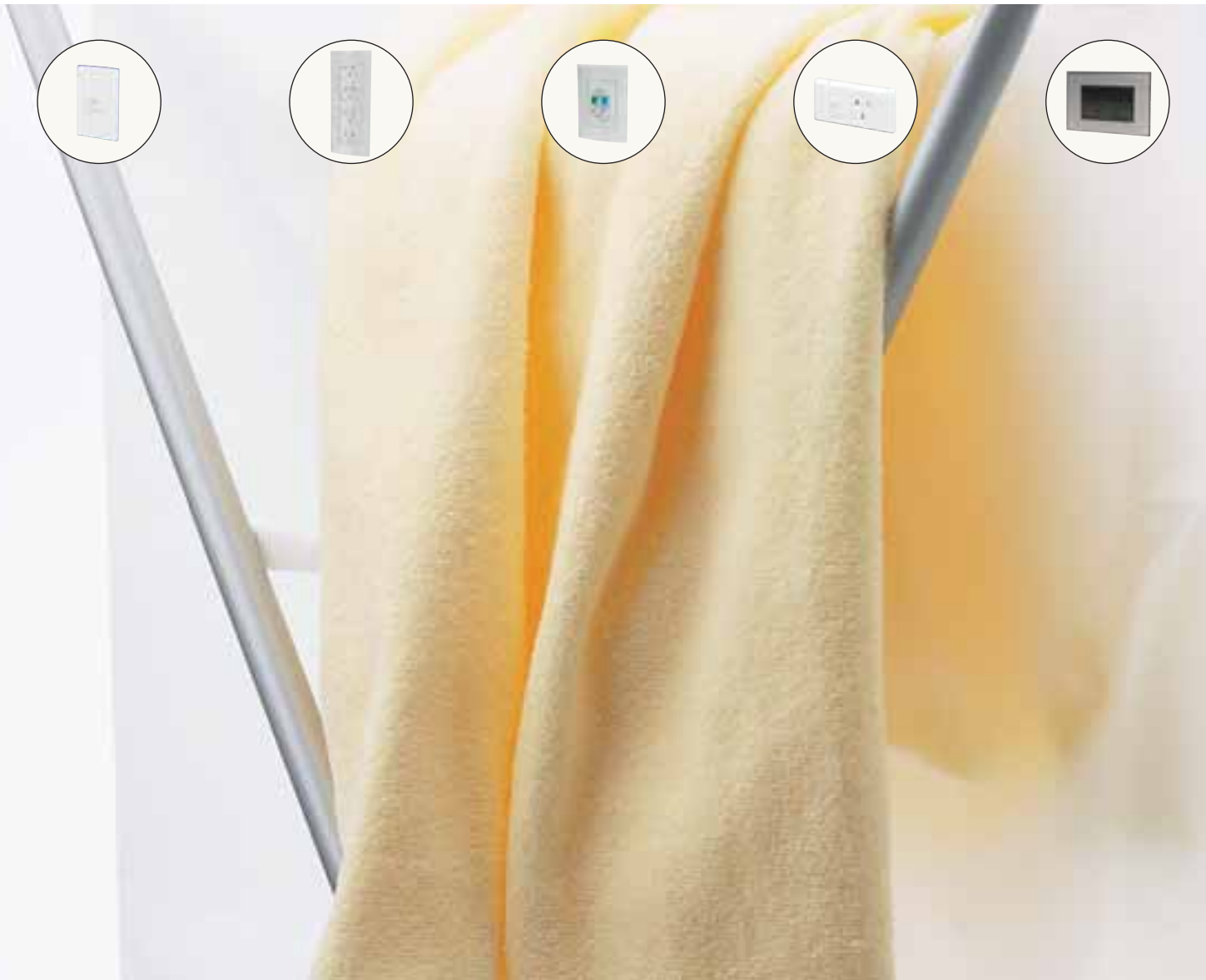
TIPS:

If dryer is ventilated into the room, use an in-line or wall/ceiling fan to disperse humid air and heat.



THINGS TO CONSIDER:

- Washing machine
- Clothes dryer
- Iron



CHOOSE YOUR OWN STYLE

Make your selection by ticking one of the 3 style options, then tick your preferred colour option



600 SERIES

COVERPLATE COLOUR OPTIONS:



- White
- Black
- Polished Brass
- Brushed Bronze
- Stainless Steel

MODULE COLOUR OPTIONS:



- White
- Black



MODENA 800

COVERPLATE COLOUR OPTIONS:



- White
- Black
- Charcoal
- Blue
- Chrome
- Red
- Champagne
- Gunmetal
- Platinum

MODULE COLOUR OPTIONS:



- White
- Black



STRATO 800

COVERPLATE COLOUR OPTIONS:



- Brushed Aluminium

MODULE COLOUR OPTIONS:



- White
- Black



Now select the options that give you the flexibility you desire in your electrical installation



SWITCHES/SOCKET OUTLETS

- Multigang power points
- Light dimmers
- Timer switch
- Push button switches
- 'Symbol' switches for dedicated circuits
- PIR sensor switch
- Toggle switches



ESSENTIAL EXTRAS

- Zelio Home Control System
- In-wall heater
- Fan speed controller
- Ventilation fan
- Smoke detector



Notes:

GARAGE/WORKSHOP

RECOMMENDATIONS:

Remember that if you have an electronic garage door, you will need to have a single power socket installed in the ceiling next to the control unit

Consider the 4 way switched 644 or 641 socket outlets. These are excellent for those situations where multiple appliances need to be plugged into the same outlet

15A socket outlets are ideal for controlling larger load electrical machines, i.e. large saw benches, blast heaters, welders etc

Use a push button tactile switch that matches the other switches in your home for controlling your automatic garage door

Multiple RCDs in your distribution board will minimise the risk of having all of your lighting and power circuits disabled in the event of tripping

Consider installing a PDL PIR sensor to activate a welcoming light at night



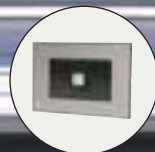
TIPS:

Consider the garage as a location for the main distribution board for your home, as it provides for easy access



THINGS TO CONSIDER:

- Work lights
- Multiple bench tools
- Radio
- TV
- Freezers
- Beer fridge



CHOOSE YOUR OWN STYLE

Make your selection by ticking one of the 3 style options, then tick your preferred colour option



600 SERIES



COVERPLATE COLOUR OPTIONS:

- White
- Black
- Polished Brass
- Brushed Bronze
- Stainless Steel



MODULE COLOUR OPTIONS:

- White
- Black



MODENA 800



COVERPLATE COLOUR OPTIONS:

- White
- Black
- Charcoal
- Blue
- Chrome
- Red
- Champagne
- Gunmetal
- Platinum

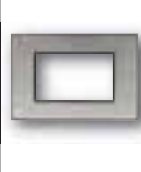


MODULE COLOUR OPTIONS:

- White
- Black



STRATO 800



COVERPLATE COLOUR OPTIONS:

- Brushed Aluminium



MODULE COLOUR OPTIONS:

- White
- Black



Now select the options that give you the flexibility you desire in your electrical installation

SWITCHES/SOCKET OUTLETS

- Multigang power points
- Light dimmers
- Timer switch
- Push button switches
- 'Symbol' switches for dedicated circuits
- Waterproof switches (600 Series only)
- PIR sensor switch
- Toggle switches

ESSENTIAL EXTRAS

- Zelio Home Control System
- Daylight switch
- Bulkhead lights
- Smoke detectors
- Extractor fan



Notes:



Schneider Electric products are available through electrical wholesalers New Zealand wide.
All PDL Electrical Products are designed to ISO 9001.

Freecall: 0800 568 888, Freefax: 0800 101 152
Email: sales@nz.schneider-electric.com
Online product detail: www.pdl.co.nz

