

600 Series

Designed for today, prepared for tomorrow.

500 Series



Switch on to New Standards in Elegance



white



ivory



cream



black

The PDL 600 Designer Series is a significant breakthrough in style and design excellence – a perfect combination of good looks and feature-rich practicality that brings new heights in elegance.

From the range of high quality plate finishes to the stylish, chamfered edges, PDL's 600 Designer Series will blend in beautifully with any decor. The

high quality finish – unhindered by any visible screw caps – combines the practical, non-marking advantages of a shiny, highly polished switch plate with the fashionable, unobtrusive appearance of a traditional matt finish.

Designed in consultation with practising electricians and endorsed by leading architects, the PDL 600 Designer Series is a uniquely elegant addition to today's decor and design.



polished brass



stainless steel



brushed bronze

The Contractor's Choice...

Over seventy practising electrical contractors were involved in setting the design and feature specifications of the PDL 600 Designer Series.

Behind the switch plates are a host of innovative time-saving installation and safety features built into the design. Extensive testing at an independent Telarc-registered laboratory – equivalent to 100 years of ordinary use – bears testimony to the superiority of the PDL switch.

The 600 Designer Series utilises the world-leading innovation of the front-loading 500 Series module and is compatible with the full range of 500 and 600 Series specialty modules.

Designed and manufactured for New Zealand homes and buildings, the 600 Designer Series is superior in so many ways.



in at least ten ways



Front-loading Modules

Front-loading switch modules cannot be pushed back into the wall cavity by frontal impact, saving low-profit maintenance calls while maximising end-user safety.



Backed-off Terminal Screws

All 600 Designer Series switch and socket terminal screws are backed off for immediate termination – bigger terminals provide more room for cable conductors.



Clear Sub Plates

PDL sub plates in clear polycarbonate are a feature of one, two, and three-gang switches. This enables clear and easy identification of wiring configurations, as well as simplifying the lining up of fixing screws with flush box threads.



Safety Shutters on all Sockets

For additional safety, all 600 Series sockets are fitted with safety shutters behind the pin holes.



Durable Decorating Cap

PDL's clear plastic decorating cap is stronger, more durable and better fitting than the thin blisters supplied with other brands. Switch can be operated while the cap is held firmly in place.



Clip-on Cover Plates

A range of clip-on covers conceal mounting screws and simplify finishing and decorating – with no visible gap between switch module and cover plate.



20 Amp Switch Rating

Switches are rated at 20 Amps as standard.

Ratings: 250V a.c., 50Hz,
20A
16AX Fluorescent,
M60 Motor Rating,
2-Way



Metal or Gloss Finish

Cover plates come in three highly popular metal finishes – polished brass, brushed bronze and stainless steel – plus five designer colours with an elegant, gloss finish that's easy to care for. For cleaning, simply use a cloth dampened with water only. Cleaning agents are not recommended as their use may harm the product and void warranty claims.



Ready-to-go Fixing Screws & Additional Loop Terminal

Fixing screws are supplied held in place by the decorating cap, ready to go as soon as the sub plate is taken out of its bag. Additional loop terminal on single switches saves time and money.



Removable Extra Switch

The removable extra switch on PDL sockets allows for greater flexibility. The extra switch can be replaced with a 500 Series or 600 Designer Series module to suit your application (excluding telephone modules). Options include neon indicators, hinged lid modules, push button switch modules, etc.

Contents

DESIGNER 600 SERIES PRODUCTS

Switches

Standard Switches	8
Waterproof Switches, IP56	9-10
Waterproof Permanent Connection Unit, IP56	10
Permanent Connection Unit	10
Fan Speed Control Switches	11
Dimmer Switches	11
Range Switches	11
Programmable Time Switches	12
Time Delay Switches	12
Card Operated Switches	13
Key Card Operated Switches	13

Switch Plates

Standard Switch Plates	14
Switch Plates with ID Facility	15
Blank Plates	16
Worktop Switch Plates	16
Architrave Switch Plates	16

Cover Plates

Switch Cover Plates	18
Socket Cover Plates	19
Dual Cover Plates	20
Combination Cover Plates	20

Protected Switches & Sockets

RCD Protected Sockets	21
RCD Protection Devices	22
RCD Protected Socket and Shaver Socket	22
Universal Shaver Socket	22

Surge Protected Socket

Fine Surge Protection	23
-----------------------	----

Switched Sockets

Vertical Switched Sockets	24-26
Horizontal Switched Sockets	27-29
Worktop Switched Sockets	30

Unswitched Socket

Horizontal, Unswitched Socket	31
-------------------------------	----

Phone, Fax & TV Outlets

BT Telephone Jacks	31
TV Outlets	31

600/500 Series Modules

Standard Switch Modules	33-34
Standard Switch Modules with Hinged Lids	34
Dedicated Switch Modules	34
Illuminated Modules	35
Buzzer Modules	35
Rotary Switch Modules	35
Tactile Switch Modules	36
Dimmer Control Modules	36
Fan Speed Control Modules	36
Push Button Switch Modules	37
Pull Cord Switch Modules	37
Permanent Connection Module	37
Blank Modules	38
Communication Modules	38-40
Module Shroud	41
Module Ejector	41

Batten Holder

Batten Holder with Clip-on Cover	41
Ceiling Mounting Base	41

500 SERIES PRODUCTS

Switch Plates

Standard Switch Plates	42
Architrave Switch Plates	42
Worktop Switch Plates	43
Surface Switch Plates	43
Telephone Switch Plates	43
Surface Mounting Enclosure	43

Switches

Surface Switches	44
Hot Water Switches	44
Ceiling Switch	44
Keylock Switches	44
Time Switch	45
Automatic Lighting Sensor Switch	45
Range Switches	45

Sockets

Range Sockets	45
Switched Sockets	46
Unswitched Socket	47
Square Plate Socket	47
Round Plate Socket	47
Threaded Socket	47
Shaver Sockets	47
RCD Protection Devices	47

OTHER PRODUCTS

Mounting Accessories

Flush Boxes	48
Mounting Brackets	48-49
Module Mounting Clips	49
Mounting Blocks and Spacers	50-51
Conversion Plate	51

Floor Mounted Accessories

Floor Socket	51
Power Tower	51

Multi-gang Steel Switch Plates

Stainless Steel Switch Plates	52
Switch Panel Wall Boxes	52

Miscellaneous Accessories

Terminals	53
Junction Boxes	53

FOCUS ON RISK MANAGEMENT

Surge Protection	54
Recessed Sockets with Safety Shrouds	54
Front Loading Modules	54
Waterproof Switches	55
Safety Shuttered Sockets	55
Safety Switches	55

TECHNICAL DATA

Wiring Diagrams	56-59
-----------------	-------

INDEX BY CATALOGUE NUMBER

Products in Numerical Order	62-63
-----------------------------	-------



Standard switches

Switches comply with Standards: AS3100, AS3133 & BS3676.
 Ratings: 250V a.c., 50Hz, 20A, 16AX Fluorescent to EN 60669-1, M60, Motor Rating.
 Terminals accommodate: 4 x 1.5mm² cables each or 2 x 2.5mm² cables each.



681
1-GANG SWITCH
 Plate: 118mm x 74mm
 Mounting centres: 84mm
 Vertical or horizontal mounting.
 Suits Cat 89 Mounting Block,
 Cat 144 Flush Box and Cat 145V,
 148V, 148H, 146V or 146H
 Mounting Bracket.
 Suits Cat 681M# Metal cover plate.



684
4-GANG SWITCH
 Plate: 118mm x 74mm
 Mounting centres: 84mm
 Vertical or horizontal mounting.
 Suits Cat 89 Mounting Block,
 Cat 144 Flush Box and Cat 145V,
 148V, 148H, 146V or 146H
 Mounting Bracket.
 Suits Cat 684M# Metal cover plate.
 Order as 684VH and 4 x 681M20.



682
2-GANG SWITCH
 Plate: 118mm x 74mm
 Mounting centres: 84mm
 Vertical or horizontal mounting.
 Suits Cat 89 Mounting Block,
 Cat 144 Flush Box and Cat 145V,
 148V, 148H, 146V or 146H
 Mounting Bracket.
 Suits Cat 682M# Metal cover plate.



685
5-GANG SWITCH
 Plate: 118mm x 74mm
 Mounting centres: 84mm
 Vertical or horizontal mounting.
 Suits Cat 89 Mounting Block,
 Cat 144 Flush Box and Cat 145V,
 148V, 148H, 146V or 146H
 Mounting Bracket.
 Suits Cat 685M# Metal cover plate.
 Order as 685VH and 5 x 681M20.



683
3-GANG SWITCH
 Plate: 118mm x 74mm
 Mounting centres: 84mm
 Vertical or horizontal mounting.
 Suits Cat 89 Mounting Block,
 Cat 144 Flush Box and Cat 145V,
 148V, 148H, 146V or 146H
 Mounting Bracket.
 Suits Cat 683M# Metal cover plate.



686
6-GANG SWITCH
 Plate: 118mm x 74mm
 Mounting centres: 84mm
 Vertical or horizontal mounting.
 Suits Cat 89 Mounting Block,
 Cat 144 Flush Box and Cat 145V,
 148V, 148H, 146V or 146H
 Mounting Bracket.
 Suits Cat 686M# Metal cover plate.
 Order as 686VH and 6 x 681M20.

Waterproof switches, IP56

Switches comply with Standards: AS3100, AS3133, BS3676 & AS1939.
Ratings: 230V - 240V a.c., 50Hz, 16A Resistive, 16AX Inductive, 10AX Fluorescent. IP 56 Protection.
Terminals accommodate: 4 x 1.5mm² cables each or 2 x 2.5mm² cables each.
Switches meet the requirements for installation in Zone 1 as per AS/NZS 3000:2000, Sections 7.1, 7.2 and 7.6, and NZS 3000: 1997, Sections 702.9.2 and 702.9.3



IP56

681VWP
VERTICAL 1-GANG SWITCH
Plate: 118mm (h) x 74mm (w)
Mounting centres: 84mm
Suits Cat 89 Mounting Block,
Cat 144 Flush Box and Cat 145V,
148V or 146V Mounting Bracket.
Suits Cat 681M# Metal cover plate.



IP56

683VWP
VERTICAL 3-GANG SWITCH
Plate: 118mm (h) x 74mm (w)
Mounting centres: 84mm
Suits Cat 89 Mounting Block,
Cat 144 Flush Box and Cat 145V,
148V or 146V Mounting Bracket.
Suits Cat 683WPM# Metal cover plate.



IP56

681HWP
HORIZONTAL 1-GANG SWITCH
Plate: 74mm (h) x 118mm (w)
Mounting centres: 84mm
Suits Cat 89 Mounting Block, Cat
144 Flush Box and Cat 148H or
146H Mounting Bracket.
Suits Cat 681M# Metal cover plate.



IP56

683VWPD
**VERTICAL 3-GANG SWITCH WITH
DEDICATED MODULES**
As for 683VWP but with dedicated
modules for light, fan and heat.
Available white only.



IP56

682VWP
VERTICAL 2-GANG SWITCH
Plate: 118mm (h) x 74mm (w)
Mounting centres: 84mm
Suits Cat 89 Mounting Block,
Cat 144 Flush Box and Cat 145V,
148V or 146V Mounting Bracket.
Suits Cat 682M# Metal cover plate.

682VWPD

682VWPD
**VERTICAL 2-GANG SWITCH WITH
DEDICATED MODULES**
As for 682VWP but with dedicated
modules for light and fan.
Available white only.



IP56

683HWP
HORIZONTAL 3-GANG SWITCH
Plate: 74mm (h) x 118mm (w)
Mounting centres: 84mm
Suits Cat 89 Mounting Block,
Cat 144 Flush Box and Cat 148H
or 146H Mounting Bracket.
Suits Cat 683WPM# Metal cover
plate.



IP56

682HWP
HORIZONTAL 2-GANG SWITCH
Plate: 74mm (h) x 118mm (w)
Mounting centres: 84mm
Suits Cat 89 Mounting Block, Cat
144 Flush Box and Cat 148H or
146H Mounting Bracket.
Suits Cat 682M# Metal cover plate.



Waterproof switches, IP56 cont...



683HWP
HORIZONTAL 3-GANG SWITCH
WITH DEDICATED MODULES
 As for 683HWP but with dedicated modules for light, fan and heat.

Available white only.

IP56



684VWP
VERTICAL 4-GANG SWITCH
 Plate: 118mm (h) x 74mm (w)
 Mounting centres: 84mm
 Suits Cat 89 Mounting Block,
 Cat 144 Flush Box and Cat 145V,
 148V or 146V Mounting Bracket.

Suits Cat 684M# Metal cover plate.

IP56



684VWPD
VERTICAL 4-GANG SWITCH
WITH DEDICATED MODULES
 As for 684VWP but with dedicated modules for light, fan and heat.

Available white only.

IP56



684HWP
HORIZONTAL 4-GANG SWITCH
 Plate: 74mm (h) x 118mm (w)
 Mounting centres: 84mm
 Suits Cat 89 Mounting Block, Cat
 144 Flush Box and Cat 148H or
 146H Mounting Bracket.

Suits Cat 684M# Metal cover plate.

IP56

684HWP

684HWP
HORIZONTAL 4-GANG SWITCH
WITH DEDICATED MODULES
 As for 684HWP but with dedicated modules for light, fan and heat.

Available white only.

Waterproof permanent connection unit, IP56

PCU complies with Standards: AS3100, AS3133 & AS1939.
 Ratings: 230V - 240V a.c., 50Hz, 16A Resistive, 16AX Inductive,
 10AX Fluorescent. IP 56 Protection.
 Terminals accommodate: 4 x 1.5mm² cables each or 2 x 2.5mm² cables each.



IP56

651VWP
PERMANENT CONNECTION
UNIT, IP56
 Plate: 118mm (h) x 74mm (w)
 Mounting centres: 84mm
 Suits Cat 89 Mounting Block,
 Cat 144 Flush Box and Cat 145V,
 148V or 146V Mounting Bracket.
 Suits Cat 682M# Metal cover plate.



Permanent Connection Unit

PCU complies with Standards: AS3100 & AS/NZS3133:2003.
 Ratings: 250V a.c., 50Hz, 20A, 16AX Fluorescent, M60.
 Terminals accommodate: 4 x 1.5mm² cables each or 2 x 2.5mm² cables each.



651
PERMANENT CONNECTION UNIT
 Plate: 118mm (h) x 74mm (w)
 Mounting centres: 84mm
 Suits Cat 89 Mounting Block,
 Cat 144 Flush Box and Cat 145V,
 148V or 146V Mounting Bracket.
 Suits Cat 682M# Metal cover plate.

Fan speed control switches

Switches comply with Standard: AS3100.
Ratings: 230V - 240V a.c., 50Hz.
Terminals accommodate: 4 x 1.5mm² cables each or 2 x 2.5mm² cables each.



625
FAN SPEED CONTROL SWITCH
Plate: 118mm (h) x 74mm (w)
Mounting centres: 84mm
Suitable for induction and shaded pole motors.
Features adjustable minimum speed control.
Suits Cat 89 Mounting Block, Cat 144 Flush Box and Cat 145V, 148V or 146V Mounting Bracket.

Suits Cat 625M# Metal cover plate.



625X
FAN SPEED CONTROL WITH EXTRA SWITCH
As for 625 but with an extra 681M20 2-Way switch module.

Suits Cat 625XM# Metal cover plate.



625C3

625C3
3-SPEED 'NO HUM' CEILING SWEEP FAN CONTROLLER
Plate: 118mm (h) x 74mm (w)
Mounting centres: 84mm
3-speed control for ceiling sweep fans up to 100VA.
Uses 2μF and 3μF capacitors to control fan speed.
Suits Cat 89 Mounting Block, Cat 144 Flush Box and Cat 145V, 148V or 146V Mounting Bracket.

Suits Cat 682M# Metal cover plate.

625C3/1
3-SPEED 'NO HUM' CEILING SWEEP FAN CONTROLLER
As for 625C3 but uses 1μF and 2μF capacitors to control fan speed.

Dimmer switches

Dimmers comply with Standards: AS3100 & AS/NZS3133:2003.
Terminals accommodate: 4 x 1.5mm² cables each or 2 x 2.5mm² cables each.



633
ROTARY DIMMER SWITCH
Rating 230-240V a.c. 50Hz, 60W-300W Leading Edge.
Plate: 118mm (h) x 74mm (w)
Mounting Centres: 84mm
Suits Cat 89 Mounting Block, Cat 144 Flush Box and Cat 145V, 148V or 146V Mounting Bracket.

Suits Cat 682M# Metal cover plate.

Dimmer switches cont...



624

624
ROTARY DIMMER SWITCH
Rating: 230V - 240V a.c. 50Hz., 70W - 400W. Lagging Edge.
Plate: 118mm (h) x 74mm (w)
Mounting centres: 84mm
Suits Cat 89 Mounting Block, Cat 144 Flush Box and Cat 145V, 148V or 146V Mounting Bracket.
Suits Cat 682M# Metal cover plate.

620K
ROTARY DIMMER SWITCH
Rating: 230V - 240V a.c. 50Hz., 150W - 1000W. Leading Edge.
Plate: 118mm (h) x 74mm (w)
Mounting centres: 84mm
Suits Cat 89 Mounting Block with Cat 557 Spacer (spacer included), Cat 144 Flush Box and Cat 145V, 148V or 146V Mounting Bracket.

Suits Cat 682M# Metal cover plate.

Range switches

Switches comply with Standards: AS3100 & AS3133.
Ratings: SP: 230V - 240V a.c., 50Hz, 32A, 20AX Fluorescent, M180.
3mm contact gap. Terminals accommodate 2 x 6mm² cables each.
DP: 400V - 415V a.c., 50Hz, 32A Resistive, 32AX Inductive. Terminals accommodate 4 x 2.5mm² cables each or 3 x 4mm² cables each.



680
VERTICAL RANGE SWITCH SP 32A
Plate: 118mm (h) x 74mm (w)
Mounting centres: 84mm
Suits Cat 89 Mounting Block, Cat 144 Flush Box and Cat 145V, 148V or 146V Mounting Bracket.
Suits Cat 680M# Metal cover plate.



679H/2

679H/2
HORIZONTAL RANGE SWITCH DP 32A
Plate: 74mm (h) x 118mm (w)
Mounting centres: 84mm
Suits Cat 89 Mounting Block, Cat 144 Flush Box and Cat 148H or 146H Mounting Bracket.

Suits Cat 679M# Metal cover plate.

679V/2
VERTICAL RANGE SWITCH DP 32A
Plate: 118mm (h) x 74mm (w)
Mounting centres: 84mm
Suits Cat 89 Mounting Block, Cat 144 Flush Box and Cat 145V, 148V or 146V Mounting Bracket.

679VN/2
As for 679V/2 but fitted with neon to indicate 'ON' and available in white only.

Programmable time switches

Switches comply with Standard: AS3100.



646E7

7 DAY ELECTRONIC TIMER

Plate: 118mm (h) x 74mm (w)
 Mounting centres: 84mm
 Rating: 230V - 240V a.c., 50Hz,
 15A resistive and 1000W tungsten
 halogen. 1 x normally open and
 1 x normally closed contact.
 Built-in rechargeable back-up battery
 prevents programming loss during
 power failures.
 7 day/ 24 hour timing facility for up
 to 6 different programmes with
 selection options including: every
 single day, weekdays, Monday to
 Saturday, and every day.
 Manual override - push ON/push OFF.
 Reset button to delete all timer
 programmes. Random facility.

Suits Cat 89 Mounting Block,
 Cat 144 Flush Box and Cat 145V,
 148V and 146V Mounting Bracket.

Available white only.

Suits Cat 646E7M# Metal cover plate.



646R24

646R24

ROTARY TIMER WITH SHIELD

Plate: 118mm (h) x 74mm (w)
 Mounting centres: 84mm
 Rating: 230V - 240V a.c., 50Hz,
 16AX resistive and 8AX inductive.
 Programmable Auto - Manual - OFF.
 N/C and N/O contacts.
 Time selection increments of
 20 minutes over a 24-hour period.
 Suits Cat 89 Mounting Block,
 Cat 144 Flush Box and Cat 145V,
 148V or 146V Mounting Bracket.

Available white only.

Suits Cat 646R24M# Metal
 cover plate.

646R7

ROTARY TIMER WITH SHIELD

As for 646R24 but with time
 selection increments of 140 minutes
 over a 7-day period.

Time delay switches

Switches comply with Standard: AS/NZS3100.



632

TIME DELAY SWITCH

Plate: 118mm (h) x 74mm (w)
 Mounting centres: 84mm
 Rating: 230V - 240V a.c., 50Hz,
 20AX resistive and inductive.
 Switch operates light and extractor
 fan together or independently. When
 light is turned OFF, fan continues
 for 8 minutes. Comes with both
 standard and 'PRESS' switch
 modules.

To use the fan without the light,
 replace Cat 681M20 module with Cat
 681M20P.

Fan load 100VA max.

Suits Cat 89 Mounting Block,
 Cat 144 Flush Box and Cat 145V,
 148V or 146V Mounting Bracket.

Suits Cat 682M# Metal cover plate.



648T60

648T5

PRE-SET TIME DELAY SWITCH

Plate: 118mm (h) x 74mm (w)
 Mounting centres: 84mm
 Rating: 230V - 240V a.c., 50Hz,
 20A resistive.

Time delay function pre-set
 at 5 minutes.

Double pole switching, normally
 open contacts.

One touch activation.

'Off' button for override of the
 timing sequence - this also
 resets the timer.

Accurate to +/- 6%.

Suits Cat 89 Mounting Block,
 Cat 144 Flush Box and Cat 145V,
 148V or 146V Mounting Bracket.

Suits Cat 686M# Metal cover plate.

648T15

PRE-SET TIME DELAY SWITCH

As for 648T5 but with time delay
 function pre-set at 15 minutes.

Accurate to +/- 6%.

648T30

PRE-SET TIME DELAY SWITCH

As for 648T5 but with time delay
 function pre-set at 30 minutes.

Accurate to +/- 6%.

648T60

PRE-SET TIME DELAY SWITCH

As for 648T5 but with time delay
 function pre-set at 60 minutes.

Accurate to +/- 6%.

648T120

PRE-SET TIME DELAY SWITCH

As for 648T5 but with time delay
 function pre-set at 120 minutes
 and accurate to +/- 8%.

Card-operated switches

Switches comply with Standards: AS3100, AS3133 & BS3676.



626VC2

626VC2

HOSPITALITY CARD SWITCH

Plate: 118mm (h) x 74mm (w)
Mounting centres: 84mm
Rating: 230V - 240V a.c., 50Hz,
2 x 16 Amp resistive circuits
controlled by a door entry card.
Provision for two extra modules
for manually controlled circuits
or other standard modules.
Suits Cat 89 Mounting Block,
Cat 144 Flush Box and Cat 145V,
148V or 146V Mounting Bracket.

Suits Cat 626VCM# Metal
cover plate.

626VC4

HOSPITALITY CARD SWITCH

Plate: 118mm (h) x 74mm (w)
Mounting centres: 84mm
Rating: 230V - 240V a.c., 50Hz,
4 x 10 Amp resistive circuits
controlled by a door entry card.
Provision for two extra modules
for manually controlled circuits
or other standard modules.
Suits Cat 89 Mounting Block,
Cat 144 Flush Box and Cat 145V,
148V or 146V Mounting Bracket.

Suits Cat 626VCM# Metal
cover plate.

Other options are available on
request. Lead times apply.

Key card operated switch

Switch complies with Standards: AS3100, AS3133 & BS3676.
Ratings: 250V a.c., 50Hz, 20A Resistive, 20AX Highly Inductive,
16AX Fluorescent, M60.

Terminals accommodate: 4 x 1.5mm² cables each or 2 x 2.5mm² cables each.



626N

626N

KEY CARD OPERATED SWITCH

Plate: 118mm (h) x 74mm (w)
Mounting centres: 84mm
2 module switch with neon
locator and Key Card.

Fitted with 2 x 681M20 2-Way
switch modules and 2 x 500B
Module Blanks.

Switches can only be operated
by the Key Card which is inserted
via the bottom slot.

Suits Cat 89 Mounting Block,
Cat 144 Flush Box and Cat 145V,
148V or 146V Mounting Bracket.
Available white only.

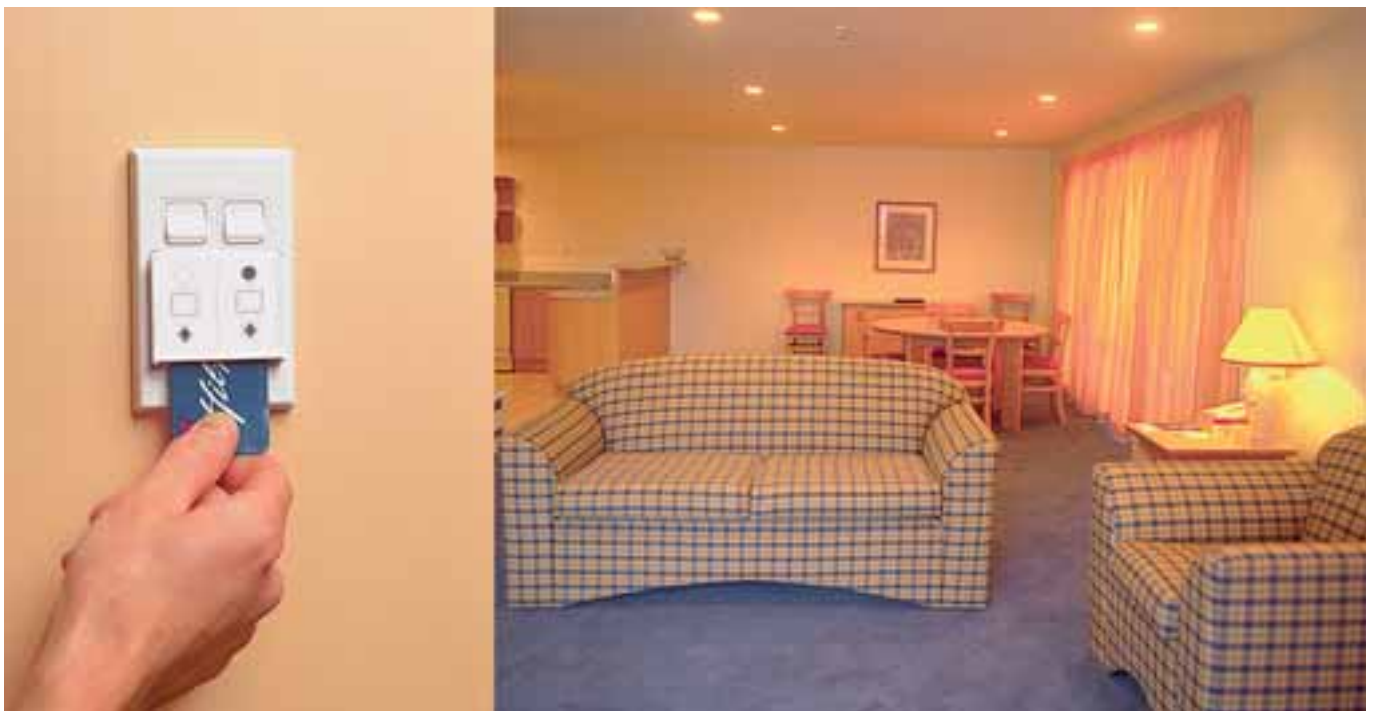
Suits Cat 626NM# Metal cover plate.

Also available

526KC

KEY CARD (CARD ONLY)

To suit 626N switch above





Standard switch plates

Plates comply with Standard: AS3100.



681VH
1-APERTURE
 Plate: 118mm x 74mm
 Mounting centres: 84mm
 Suits Cat 89 Mounting Block,
 Cat 144 Flush Box and Cat 145V,
 148V, 148H, 146V or 146H
 Mounting Bracket.
 Suits Cat 681M# Metal cover plate.



684VH
4-APERTURE
 Plate: 118mm x 74mm
 Mounting centres: 84mm
 Suits Cat 89 Mounting Block,
 Cat 144 Flush Box and Cat 145V,
 148V, 148H, 146V or 146H
 Mounting Bracket.
 Suits Cat 684M# Metal cover plate.



682VH
2-APERTURE
 Plate: 118mm x 74mm
 Mounting centres: 84mm
 Suits Cat 89 Mounting Block,
 Cat 144 Flush Box and Cat 145V,
 148V, 148H, 146V or 146H
 Mounting Bracket.
 Suits Cat 682M# Metal cover plate.



685VH
5-APERTURE
 Plate: 118mm x 74mm
 Mounting centres: 84mm
 Suits Cat 89 Mounting Block,
 Cat 144 Flush Box and Cat 145V,
 148V, 148H, 146V or 146H
 Mounting Bracket.
 Suits Cat 686M# Metal cover plate.



683VH
3-APERTURE
 Plate: 118mm x 74mm
 Mounting centres: 84mm
 Suits Cat 89 Mounting Block,
 Cat 144 Flush Box and Cat 145V,
 148V, 148H, 146V or 146H
 Mounting Bracket.
 Suits Cat 683M# Metal cover plate.



686VH
6-APERTURE
 Plate: 118mm x 74mm
 Mounting centres: 84mm
 Suits Cat 89 Mounting Block,
 Cat 144 Flush Box and Cat 145V,
 148V, 148H, 146V or 146H
 Mounting Bracket.
 Suits Cat 686M# Metal cover plate.

Switch plates with ID facility

Plates comply with Standard: AS3100.



681VID
1 APERTURE
Plate: 118mm (h) x 74mm (w)
Mounting centres: 84mm
Suits Cat 89 Mounting Block,
Cat 144 Flush Box and Cat 145V,
148V, 148H, 146V or 146H
Mounting Bracket.

Available white only.
Metal cover plate N/A.



683HID
3-APERTURE
Plate: 74mm (h) x 118mm (w)
Mounting centres: 84mm
Suits Cat 89 Mounting Block,
Cat 144 Flush Box and Cat 145V,
148V, 148H, 146V or 146H
Mounting Bracket.

Available white only.
Metal cover plate N/A.



681HID
1 APERTURE
Plate: 74mm (h) x 118mm (w)
Mounting centres: 84mm
Suits Cat 89 Mounting Block,
Cat 144 Flush Box and Cat 145V,
148V, 148H, 146V or 146H
Mounting Bracket.

Available white only.
Metal cover plate N/A.



684VID
4-APERTURE
Plate: 118mm (h) x 74mm (w)
Mounting centres: 84mm
Suits Cat 89 Mounting Block,
Cat 144 Flush Box and Cat 145V,
148V, 148H, 146V or 146H
Mounting Bracket.

Available white only.
Metal cover plate N/A.



682VID
2-APERTURE
Plate: 118mm (h) x 74mm (w)
Mounting centres: 84mm
Suits Cat 89 Mounting
Block, Cat 144 Flush Box and
Cat 145V, 148V, 148H, 146V
or 146H Mounting Bracket.

Available white only.
Metal cover plate N/A.



684HID
4-APERTURE
Plate: 74mm (h) x 118mm (w)
Mounting centres: 62mm
Suits Cat 89 Mounting Block,
Cat 144 Flush Box and Cat 145V,
148V, 148H 146V or 146H
Mounting Bracket.

Available white only.
Metal cover plate N/A.



682HID
2-APERTURE
Plate: 74mm (h) x 118mm (w)
Mounting centres: 84mm
Suits Cat 89 Mounting
Block, Cat 144 Flush Box and
Cat 145V, 148V, 148H, 146V
or 146H Mounting Bracket.

Available white only.
Metal cover plate N/A.



Switch plates

Blank plates

Plates comply with Standard: AS3100.



650BVH STANDARD FULL-FACE BLANK PLATE

Plate: 118mm x 74mm
Mounting centres: 84mm
Suits Cat 89 Mounting Block,
Cat 144 Flush Box and Cat 145V,
148V, 148H, 146V or 146H
Mounting Bracket.

Suits Cat 650BM# Metal cover plate.



650VH BLANK PLATE

Plate: 118mm x 74mm
Mounting centres: 84mm
Suits Cat 89 Mounting Block,
Cat 144 Flush Box and Cat 145V,
148V, 148H, 146V or 146H
Mounting Bracket.
Suitable for use by OEM customers.

Suits Cat 686M# Metal cover plate.

Worktop switch plates

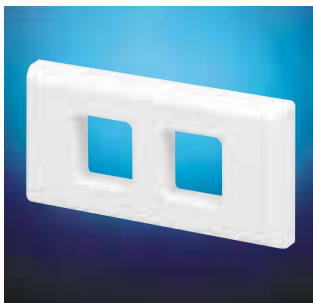
Plates comply with Standard: AS3100.



688VH 1-APERTURE

Plate: 48mm (h) x 100mm (w)
Mounting centres: 80mm
Suits Cat 567S Mounting
Block and Cat 558
Mounting Bracket.

Suits Cat 688M# Metal cover plate.



689VH 2-APERTURE

Plate: 48mm (h) x 100mm (w)
Mounting centres: 80mm
Suits Cat 567S Mounting
Block and Cat 558
Mounting Bracket.

Suits Cat 689M# Metal cover plate.

Architrave switch plates

Plates comply with Standard: AS3100.



661VH 1-APERTURE

Plate: 78mm x 32mm
Mounting centres: 62mm
Suits Cat 560 Mounting Block.

Suits Cat 661M# Metal cover plate.



662VH 2-APERTURE

Plate: 78mm x 32mm
Mounting centres: 62mm
Suits Cat 560 Mounting Block.

Suits Cat 662M# Metal cover plate.



663VH 3-APERTURE

Plate: 130mm x 32mm
Mounting centres: 114mm
Suits Cat 565 Mounting Block.

Metal cover plate N/A.



664VH 4-APERTURE

Plate: 130mm x 32mm
Mounting centres: 114mm
Suits Cat 565 Mounting Block.

Metal cover plate N/A.

Good ventilation for healthy living

Create a healthy living environment with the PDL exhaust fans

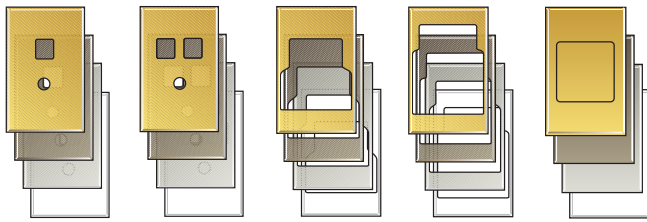


Features

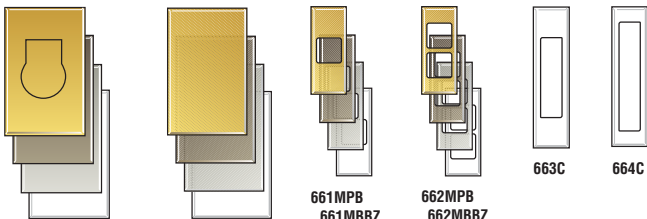
- Stylish
- Easy to install
- Easy to clean and maintain
- Manufactured from thermal, shock-resistant plastic material for durability and maximum performance
- Lightweight ducting
- Motors with safety thermal fuse
- Round grilles are mounted with clamps for fast, easy installation and to prevent cracking from screw holes
- Round grilles don't need to be oriented



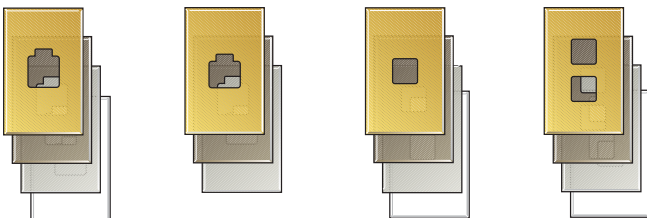
Switch cover plates



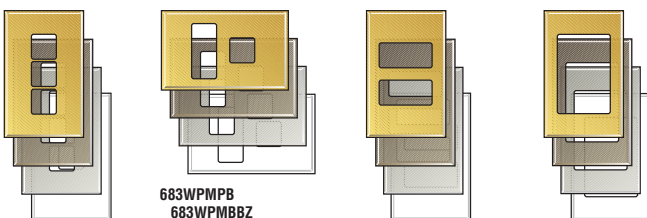
625MPB 625MMPB 626NMPB 626VCMPB 646E7MPB
 625MABBZ 625XMABBZ 626NMABBZ 626VCMABBZ 646E7MABBZ
 625MSS 625XMSS 626NMSS 626VCMSS 646E7MSS
 625C 625XC 626NC 626VCC 646E7C



646R24MPB 650MPB 661MPB 662MPB 663C 664C
 646R24MABBZ 650MABBZ 661MABBZ 662MABBZ
 646R24MSS 650BMSS 661MSS 662MSS
 646R24C 650BC 661C 662C



679MPB 680MPB 681MPB 682MPB
 679MABBZ 680MABBZ 681MABBZ 682MABBZ
 679MSS 680MSS 681MSS 682MSS
 679C 680C 681C 682C



683MPB 683WPMMPB 684MPB 686MPB
 683MABBZ 683WPMABBZ 684MABBZ 686MABBZ
 683MSS 683WPMSS 684MSS 686MSS
 683C 683WPC 684C 686C



688MPB 689MPB
 688MABBZ 689MABBZ
 688MSS 689MSS

Polished brass finish

625MPB	661MPB	683MPB
625XMPB	662MPB	683WPMMPB
626NMPB	679MPB	684MPB
626VCMPB	680MPB	686MPB
646E7MPB	681MPB	688MPB
646R24MPB	682MPB	689MPB
650BMPB		

Brushed bronze finish

625MABBZ	661MABBZ	683MABBZ
625XMABBZ	662MABBZ	683WPMABBZ
626NMABBZ	679MABBZ	684MABBZ
626VCMABBZ	680MABBZ	686MABBZ
646E7MABBZ	681MABBZ	688MABBZ
646R24MABBZ	682MABBZ	689MABBZ
650BMABBZ		

Stainless steel finish

625MSS	661MSS	683MSS
625XMSS	662MSS	683WPMSS
626NMSS	679MSS	684MSS
626VCMSS	680MSS	686MSS
646E7MSS	681MSS	688MSS
646R24MSS	682MSS	689MSS
650BMSS		

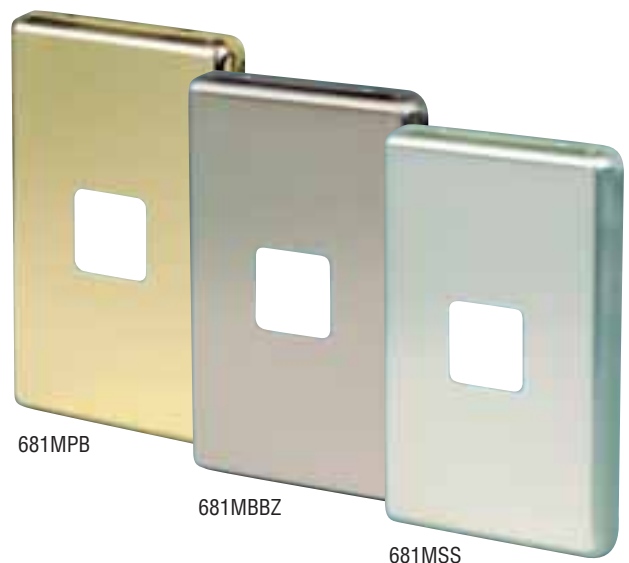
Plastic finish

(Available white only)

625C	661C	683C
625XC	662C	683WPC
626NC	663C	684C
626VCC	664C	686C
646E7C	679C	688C
646R24C	681C	689C
650BC	682C	

Switch cover plates can be used vertically or horizontally.

Security screwed metal switch cover plates are available from PDL Customer Services, Christchurch.



Socket cover plates

Polished brass finish

612MPB	692XMPB	695RCDMPB
691MPB	694MPB	695XMPB
691RCDMPB	694XMPB	698MPB
691XMPB	694XXMPB	699TBMPB
692MPB	695MPB	

Brushed bronze finish

612MBBZ	692XMBBZ	695RCDMBBZ
691MBBZ	694MBBZ	695XMBBZ
691RCDMBBZ	694XMBBZ	698MBBZ
691XMBBZ	694XXMBBZ	699TBMBBZ
692MBBZ	695MBBZ	

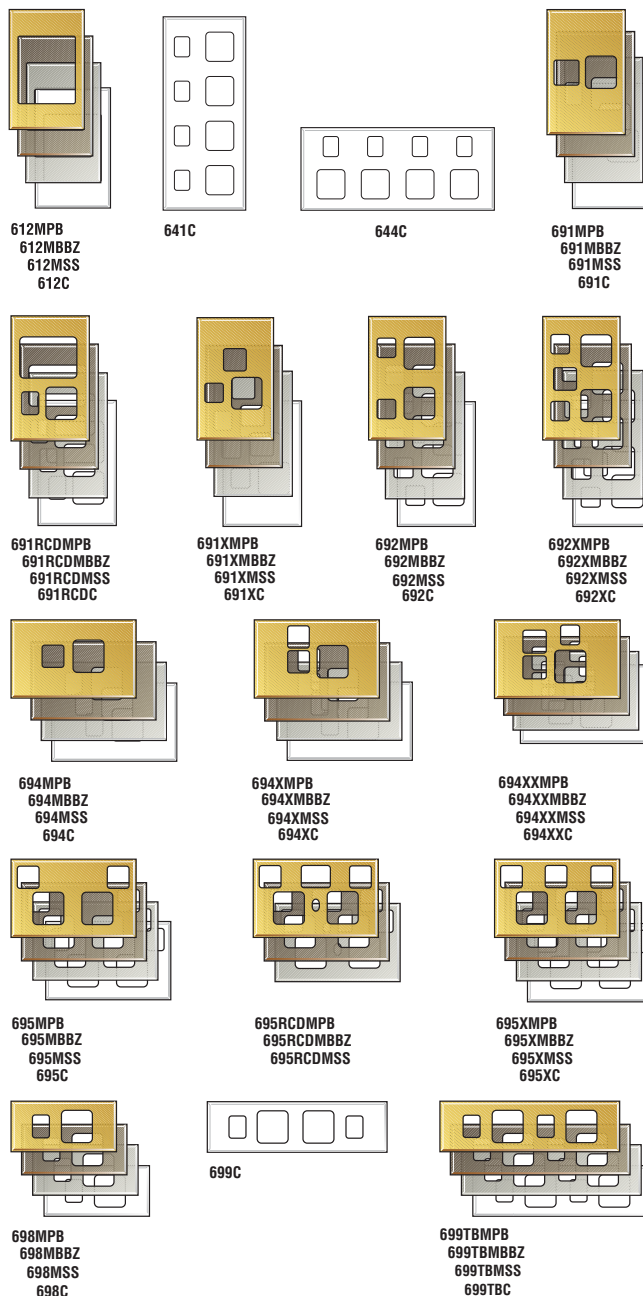
Stainless steel finish

612MSS	692XMSS	695RCDMSS
691MSS	694MSS	695XMSS
691RCDMSS	694XMSS	698MSS
691XMSS	694XXMSS	699TBMSS
692MSS	695MSS	

Plastic finish

(Available white only)

612C	692C	695C
641C	692XC	695XC
644C	694C	698C
691C	694XC	699C
691RDC	694XXC	699TBC
691XC		



Shrouded socket cover plates are supplied with security screws and special drill bits to allow for retrofitting of the sockets.

Security screwed metal socket cover plates are available from PDL Customer Services, Christchurch.

Dual and combination cover plates



Dual cover plates



692-692C

692-692C DUAL COVER FOR CAT 692 SOCKETS

Plate: 118mm (h) x 145mm (w)
Available white only. Suits Cat 149
Flush Box.

683-683C DUAL COVER FOR CAT 683 SWITCHES

Plate: 118mm (h) x 145mm (w)
Available white only. Suits Cat 149
Flush Box.

686-686C DUAL COVER FOR CAT 686 SWITCHES

Plate: 118mm (h) x 145mm (w)
Available white only. Suits Cat 149
Flush Box.

695-695C DUAL COVER FOR CAT 695 SOCKETS

Plate: 145mm (h) x 118mm (w)
Available white only. Suits Cat 149
Flush Box.

684-684C DUAL COVER FOR CAT 684 SWITCHES

Plate: 118mm (h) x 145mm (w)
Available white only. Suits Cat 149
Flush Box.

*Other dual cover plate combinations
are available on request.*



Dual cover plates



683-692C

683-692C COMBINATION COVER FOR THREE MODULES & CAT 692 SOCKET

Plate: 118mm (h) x 145mm (w)
Available white only. Suits Cat 149
Flush Box.

681-695C COMBINATION COVER FOR SINGLE MODULE & CAT 695 SOCKET

Plate: 145mm (h) x 118mm (w)
Available white only. Suits Cat 149
Flush Box.

682-681C COMBINATION COVER FOR TWO MODULES & SINGLE MODULE

Plate: 118mm (h) x 145mm (w)
Available white only. Suits Cat 149
Flush Box.

692-681C COMBINATION COVER FOR CAT 692 SOCKET & SINGLE MODULE

Plate: 118mm (h) x 145mm (w)
Available white only. Suits Cat 149
Flush Box.

695-695XC COMBINATION COVER FOR CAT 695 SOCKET & CAT 695X SOCKET

Plate: 145mm (h) x 118mm (w)
Available white only. Suits Cat 149
Flush Box.

*Other combination cover plates are
available on request.*





RCD PROTECTED SOCKETS

RCDs comply with Standards: AS3100, AS3133, AS3112 & AS3190.
Rating: 230V - 240V a.c., 50Hz, 10A outlet, 20A rated.
Can be connected for downstream socket protection.



691RCD-30

691RCD-10
SINGLE SWITCHED SOCKET 10A
WITH 10MA RCD PROTECTION
Plate: 118mm (h) x 74mm (w)
Mounting centres: 84mm
Suits Cat 89 Mounting Block, Cat 144 Flush Box and Cat 145V, 148V or 146V Mounting Bracket.
30mA tripping current.
30ms tripping time.

Available white only.

Suits Cat 691RCDM# Metal cover plate.

691RCD-30
SINGLE SWITCHED SOCKET 10A
WITH 30MA RCD PROTECTION
As for 691RCD-10 but with 30mA tripping current.

Available white and black only.



695RCD-30

695RCD-10
DOUBLE SWITCHED SOCKET 10A
WITH 10MA RCD PROTECTION
Plate: 74mm (h) x 118mm (w)
Mounting centres: 84mm
Suits Cat 89 Mounting Block, Cat 144 Flush Box and Cat 148H or 146H Mounting Bracket.
10mA tripping current.
30ms tripping time.

Available white only.

Suits Cat 695RCDM# Metal cover plate.

695RCD-30
DOUBLE SWITCHED SOCKET 10A
WITH 30MA RCD PROTECTION
As for 695RCD-10 but with 30mA tripping current.

PDL 600 Series provides solutions for the majority of requirements associated with AS/NZS 3003 Electrical installations. This includes colour coding of sockets for patient areas of hospitals, medical and dental practices and dialysing locations. Specially coloured items are only available on request. Special pricing and lead-times may apply on some items.



Protected switches and sockets

RCD protection devices

RCDs comply with Standards: AS3100, AS3133 & AS3190.
Rating: 230V - 240V a.c., 50Hz, 20A rated.
Can be connected for downstream socket protection.



696RCD-10

696RCD-10 PLATE MOUNTED RCD 20A WITH 10mA RCD PROTECTION

Plate: 118mm (h) x 74mm (w)
Mounting centres: 84mm
Protects all socket outlets or permanently-wired appliances downstream.
Suits Cat 89 Mounting Block, Cat 144 Flush Box and Cat 145V, 148V, 148H, 146H or 146V Mounting Bracket.
10mA tripping current.
30ms tripping time.

Contacts remain closed in loss of voltage situations.

Double pole switching protects the appliance user against an earth fault even in the situation where Active and Neutral have been reversed.

Available white only.

Suits Cat 686M# Metal cover plate.

696RCD-30 PLATE MOUNTED RCD 20A WITH 30mA RCD PROTECTION

As for 696RCD-10 but with 30mA tripping current.



RCD Protected Socket and Shaver Socket



675HRCD-30 RCD PROTECTED SOCKET & SHAVER SOCKET

Plate: 118mm (h) x 145mm (w)
Mounting centres: 84mm
RCD Protected Socket and Universal Shaver Socket on one plate. Comes complete with Cat 149 Flush Box.

Available white only.

Metal cover plate N/A.

RCD Protected Socket

Rating: 230V - 240V a.c., 50Hz.
Rated Current: 10A Socket Outlet
Complies with Standards: AS3100, AS3190, AS3133 & AS3112.
30mA tripping current.
30ms tripping time.
Provides RCD protection to all sockets wired downstream of the RCD unit.

Universal Shaver Socket

Rating: 230V - 240V a.c. primary and 240V - 115V a.c. secondary, 20VA max. Double insulated.
Switches on when plug is inserted.
Complies with Standards: AS3100 & AS3194.

Shaver Socket

Socket complies with Standards: AS3100 & AS3194.
Ratings: 230V - 240V a.c., 50Hz primary; 240V or 115V a.c. secondary, 20VA max rated.



675 UNIVERSAL SHAVER SOCKET

Plate: 118mm x 74mm
Mounting centres: 84mm
Double insulated.
Switches on when plug is inserted.
Vertical or horizontal mounting.
Suits Cat 89 Mounting Block with Cat 557 Spacer (spacer included), Cat 144 Flush Box and Cat 145V, 148V, 148H, 146V or 146H Mounting Bracket.

Suits Cat 686M# Metal cover plate.

Fine surge protection

Surge protected socket complies with standards: AS/NZS3112 and AS/NZS3100.
Can be connected for upstream and downstream socket protection
Ratings: 230V - 240V a.c., 50Hz, Nominal clamp voltage 710V @ 50Hz.



695SP SURGE PROTECTED SWITCHED SOCKET

Plate: 74mm (h) x 118mm (w)
Protects all socket outlets or permanently wired appliances both upstream and downstream on the same circuit.
Double pole switching. Surge protection status is clearly indicated by both visual and audible means.

Suits Cat 89 Mounting Block, Cat 144 Flush Box and Cat 148H or 146H Mounting Bracket.

Available white only.

Metal cover plate N/A.

For added protection, PDL recommends that medium surge protection (Merlin Gerin Cat 16600 and Cat 16604) is fitted to the switchboard.



600SPM REPLACEMENT MODULE FOR 695SP

Front fitting module allowing for easy and safe replacement.
Response time <25nS.

Available white only.



Switched Sockets



Vertical switched sockets

Switched sockets comply with Standards: AS3100, AS3133 & AS3112.

Ratings: 230V - 240V a.c., 50Hz.

For additional safety, all PDL 600 Designer Series sockets are fitted with safety shutters behind the pin holes.



691
SINGLE SWITCHED SOCKET 10A
Plate: 118mm (h) x 74mm (w)
Mounting centres: 84mm
Suits Cat 89 Mounting Block,
Cat 144 Flush Box and Cat 145V,
148V or 146V Mounting Bracket.

Suits Cat 691M# Metal cover plate.



691/15
SINGLE SWITCHED SOCKET 15A
Plate: 118mm (h) x 74mm (w)
Mounting centres: 84mm
Suits Cat 89 Mounting Block,
Cat 144 Flush Box and Cat 145V,
148V or 146V Mounting Bracket.

Available white only.

Suits Cat 691M# Metal cover plate.



691X
SINGLE SWITCHED SOCKET 10A
WITH REMOVABLE EXTRA
SWITCH 20A
Plate: 118mm (h) x 74mm (w)
Mounting centres: 84mm
Suits Cat 89 Mounting Block,
Cat 144 Flush Box and Cat 145V,
148V or 146V Mounting Bracket.

Available white only.

Suits Cat 691XM# Metal cover plate.



692
DOUBLE SWITCHED SOCKET 10A
Plate: 118mm (h) x 74mm (w)
Mounting centres: 84mm
Suits Cat 89 Mounting Block,
Cat 144 Flush Box and Cat 145V,
148V or 146V Mounting Bracket.

Suits Cat 692M# Metal cover plate.



691R
SINGLE SWITCHED SOCKET 10A
WITH ROUND EARTH PIN
As for 691 but with round earth pin
for dedicated circuit.
Plate: 118mm (h) x 74mm (w)
Mounting centres: 84mm
Suits Cat 89 Mounting Block,
Cat 144 Flush Box and Cat 145V,
148V or 146V Mounting Bracket.

Available white only.

Suits Cat 691M# Metal cover plate.



Vertical switched sockets cont...



692N

As for 692 but fitted with neon to indicate 'ON', and available white only.

Suits Cat 692M# Metal cover plate.



692R

DOUBLE SWITCHED SOCKET 10A WITH ROUND EARTH PIN

As for 692 but with round earth pin for dedicated circuit.

Plate: 118mm (h) x 74mm (w)

Mounting centres: 84mm

Suits Cat 89 Mounting Block, Cat 144 Flush Box and Cat 145V, 148V or 146V Mounting Bracket.

Available white only.

Suits Cat 692M# Metal cover plate.



692X

DOUBLE SWITCHED SOCKET 10A WITH REMOVABLE EXTRA SWITCH 20A

Plate: 118mm (h) x 74mm (w)

Mounting centres: 84mm

Suits Cat 89 Mounting Block, Cat 144 Flush Box and Cat 145V, 148V or 146V Mounting Bracket.

Suits Cat 692XM# Metal cover plate.



692/15

DOUBLE SWITCHED SOCKET 15A

Plate: 118mm (h) x 74mm (w)

Mounting centres: 84mm

Suits Cat 89 Mounting Block, Cat 144 Flush Box and Cat 145V, 148V or 146V Mounting Bracket.

Available white only.

Suits Cat 692M# Metal cover plate.



692P

DOUBLE SWITCHED SOCKET 10A WITH 'RCD PROTECTED' INDICATOR

Plate: 118mm (h) x 74mm (w)

Mounting centres: 84mm

Suits Cat 89 Mounting Block, Cat 144 Flush Box and Cat 145V, 148V or 146V Mounting Bracket. AMBER glowing 'RCD ON' indicator.

Available in White only.

Suits Cat 692XM# Metal cover plate.



692ID

DOUBLE SWITCHED SOCKET 10A WITH CIRCUIT IDENTIFICATION

As for 692 but with circuit identification. An opaque cap (supplied) can be engraved before clipping onto the sub plate.

Alternatively, a label can be printed and covered with a transparent cap (cap supplied).

Available white only.

Suits Cat 692XM# Metal cover plate.



Switched Sockets

Vertical switched sockets cont...



641
4-WAY SWITCHED SOCKET 10A
Plate: 194mm (h) x 81mm (w)
Mounting centres: 84mm
4 x 10A socket outlets.
Suits Cat 144 Flush Box and
Cat 148V or 146V Mounting Bracket
and Cat 640RC and 640SC 4 Gang
Mounting Block.
Metal cover plate N/A.



641P
**4-WAY SWITCHED SOCKET 10A
WITH 'RCD ON' INDICATOR**
Plate: 194mm (h) x 81mm (w)
Mounting centres: 84mm
4 x 10A socket outlets.
Suits Cat 144 Flush Box and Cat
148V or 146V Mounting Bracket and
Cat 640RC and Cat 640SC 4 Gang
Mounting Block.
Available white only
Metal cover plate N/A.



641/15
**4-WAY SWITCHED SOCKET
WITH 10A AND 15A OUTLETS**
Plate: 194mm (h) x 81mm (w)
Mounting centres: 84mm
3 x 10A socket outlets and
1 x 15A socket outlet.
Suits Cat 144 Flush Box and Cat
148V or 146V Mounting Bracket and
Cat 640RC and Cat 640SC 4 Gang
Mounting Block.
Available white only.
Metal cover plate N/A.





Cat 695P switched socket pictured above features an 'RCD ON' indicator, showing earth leakage protection status for the circuit.

Horizontal switched sockets

Switched sockets comply with Standards: AS3100, AS3133 & AS3112.
Ratings: 230V - 240V a.c., 50Hz.



694
SINGLE SWITCHED SOCKET 10A
Plate: 74mm (h) x 118mm (w)
Mounting centres: 84mm
Suits Cat 89 Mounting Block,
Cat 144 Flush Box and Cat 148H
or 146H Mounting Bracket.
Suits Cat 694M# Metal cover plate.



694XX
SINGLE SWITCHED SOCKET 10A
WITH 2 REMOVABLE EXTRA
SWITCHES 20A
Plate: 74mm (h) x 118mm (w)
Mounting centres: 84mm
Suits Cat 89 Mounting Block,
Cat 144 Flush Box and Cat 148H
or 146H Mounting Bracket.
Available white only.
Suits Cat 694XXM# Metal
cover plate.



694X
SINGLE SWITCHED SOCKET 10A
WITH REMOVABLE EXTRA
SWITCH 20A
Plate: 74mm (h) x 118mm (w)
Mounting centres: 84mm
Suits Cat 89 Mounting Block,
Cat 144 Flush Box and Cat 148H
or 146H Mounting Bracket.
Available white only.
Suits Cat 694XM# Metal cover plate.



694/15
SINGLE SWITCHED SOCKET 15A
Plate: 74mm (h) x 118mm (w)
Mounting centres: 84mm
Suits Cat 89 Mounting Block,
Cat 144 Flush Box and Cat 148H
or 146H Mounting Bracket.
Available white only.
Suits Cat 694M# Metal cover plate.

Switched sockets

Horizontal switched sockets cont...



695

695 **DOUBLE SWITCHED SOCKET 10A**

Plate: 74mm (h) x 118mm (w)
Mounting centres: 84mm
Suits Cat 89 Mounting Block,
Cat 144 Flush Box and Cat 148H
or 146H Mounting Bracket.

Suits Cat 695M# Metal cover plate.

695N

As for 695 but fitted with neon to
indicate 'ON'.

Available white only.



695ID **DOUBLE SWITCHED SOCKET 10A** **WITH CIRCUIT IDENTIFICATION**

As for 695 but with circuit
identification. An opaque cap
(supplied) can be engraved before
clipping onto the sub plate.
Alternatively, a label can be printed
and covered with a transparent cap
(cap supplied).

Available white only.

Suits Cat 695XM# Metal cover plate.



695X **DOUBLE SWITCHED SOCKET 10A** **WITH REMOVABLE EXTRA** **SWITCH 20A**

Plate: 74mm (h) x 118mm (w)
Mounting centres: 84mm
Suits Cat 89 Mounting Block,
Cat 144 Flush Box and Cat 148H
or 146H Mounting Bracket.

Suits Cat 695XM# Metal cover plate.



695R **DOUBLE SWITCHED SOCKET 10A** **WITH ROUND EARTH PIN**

As for 695 but with round earth pin
for dedicated circuit.

Plate: 74mm (h) x 118mm (w)
Mounting centres: 84mm
Suits Cat 89 Mounting Block,
Cat 144 Flush Box and Cat 148H or
146H Mounting Bracket.

Available white only.

Suits Cat 695M# Metal cover plate.



695P **DOUBLE SWITCHED SOCKET** **10A WITH 'RCD PROTECTED'** **INDICATOR**

Plate: 74mm (h) x 118mm (w)
Mounting centres: 84mm
Suits Cat 89 Mounting Block,
Cat 144 Flush Box and Cat 148H
or 146H Mounting Bracket.
AMBER glowing 'RCD ON' indicator.

Available white only.

Suits Cat 695XM# Metal cover plate.



695/15 **DOUBLE SWITCHED SOCKET 15A**

Plate: 74mm (h) x 118mm (w)
Mounting centres: 84mm
Suits Cat 89 Mounting Block,
Cat 144 Flush Box and Cat 148H or
146H Mounting Bracket.

Available white only.

Suits Cat 695M# Metal cover plate.





Horizontal switched sockets cont...



644
4-WAY SWITCHED SOCKET 10A
Plate: 79mm (h) x 191mm (w)
Mounting centres: 84mm
4 x 10A socket outlets.
Suits Cat 144 Flush Box and Cat 148H or 146H Mounting Bracket and Cat 640RC and 640SC 4 Gang Mounting Block.

Metal cover plate N/A.



644N
As for 644 but fitted with neon to indicate 'ON'.



644/15
4-WAY SWITCHED SOCKET WITH 10A AND 15A OUTLETS
Plate: 79mm (h) x 191mm (w)
Mounting centres: 84mm
3 x 10A socket outlets and 1 x 15A socket outlet.
Suits Cat 144 Flush Box and Cat 148H or 146H Mounting Bracket and Cat 640RC and 640SC 4 Gang Mounting Block.

Available white only.

Metal cover plate N/A.

Switched sockets

Worktop switched sockets

Switched sockets comply with Standards: AS3100, AS3133 & AS3112.
Ratings: 230V - 240V a.c., 50Hz.



698

698
SINGLE SWITCHED SOCKET 10A
Plate: 48mm (h) x 100mm (w)
Mounting centres: 80mm
Suits Cat 567S Mounting Block
and Cat 558 Mounting Bracket.
Suits Cat 698M# Metal cover plate.

698N
As for 698 but fitted with neon
to indicate 'ON'.



698R
**SINGLE SWITCHED SOCKET 10A
WITH ROUND EARTH PIN**
As for 698 but with round earth
pin for dedicated circuit.
Suits Cat 698M# Metal cover plate.



698/15
SINGLE SWITCHED SOCKET 15A
Plate: 48mm (h) x 100mm (w)
Mounting centres: 80mm
Suits Cat 567S Mounting Block
and Cat 558 Mounting Bracket.
Suits Cat 698M# Metal cover plate.



699
DOUBLE SWITCHED SOCKET 10A
Plate: 48mm (h) x 170mm (w)
Mounting centres: 150mm
Single piece base for simpler
termination.

Suits Cat 567L Mounting Block
and Cat 559 Mounting Bracket.

Metal cover plate N/A.



699TB

699TB
**DOUBLE SWITCHED SOCKET 10A
WITH SEPARATE BASES**
Plate 48mm (h) x 170mm (w)
Mounting centres: 150mm
Suits Cat 567L Mounting Block
and Cat 559 Mounting Bracket.

Suits Cat 699TBM# Metal
cover plate.

699TBN
As for 699TB but fitted with neon
to indicate 'ON'.



699TBR
**DOUBLE SWITCHED SOCKET 10A
WITH ROUND EARTH PIN**
As for 699TB but with round
earth pin for dedicated circuit.
Available white only.

Suits Cat 699TBM# Metal
cover plate.



699TB/15
DOUBLE SWITCHED SOCKET 15A
Plate: 48mm (h) x 170mm (w)
Mounting centres: 150mm
Suits Cat 567L Mounting Block
and Cat 559 Mounting Bracket.

Available white only.

Suits Cat 699TBM# Metal
cover plate.

Horizontal unswitched socket

Socket complies with Standards: AS3100 & AS3112.
Rating: 230V - 240V a.c., 50Hz.



693/2
DOUBLE HORIZONTAL UNSWITCHED SOCKET 10A
Plate: 74mm (h) x 118mm (w)
Mounting centres: 84mm
Separate bases allow for individual circuit control of appliances such as dishwashers and waste disposal units. Suits Cat 144 Flush Box and Cat 148H or 146H Mounting Bracket.

Available white only.
Metal cover plate N/A.



Phone, fax and TV outlets

BT telephone jackpoints



617BT2
2-WIRE BT SINGLE TELEPHONE OUTLET PLATE
Plate: 118mm (h) x 74mm (w)
Mounting centres: 84mm
Standard 2-wire telephone outlet. IDC termination. Suits Cat 89 Mounting Block, Cat 144 Flush Box and Cat 145V, 148V or 146V Mounting Bracket.

Available white only.
Suits 612M# Metal cover plate.
Approved to Telepermit PTC 223/96/002.



617BT2/2
2-WIRE BT DOUBLE TELEPHONE OUTLET PLATE
Plate: 118mm (h) x 74mm (w)
Mounting centres: 84mm
Twin 2-wire telephone outlet, allowing two separate lines or two outlets from one line. IDC termination. Suits Cat 89 Mounting Block, Cat 144 Flush Box and Cat 145V, 148V or 146V Mounting Bracket.

Available white only.
Suits 612M# Metal cover plate.
Approved to Telepermit PTC 223/97/003.



TV outlet



628
TV OUTLET
Plate: 118mm (h) x 74mm (w)
Mounting centres: 84mm PAL type socket with clamp terminals. Rating: 75 Ohm. Suits Cat 89 Mounting Block, Cat 144 Flush Box and Cat 145V, 148V, 148H, 146V or 146H Mounting Bracket.

Suits Cat 681M# Metal cover plate.

628

628F
TV OUTLET
As for 628 but PAL type socket with 'F' connect facility in rear.

Switch mech breakthrough!

There's a **tough** new
mech in town



Switch more applications than ever possible before with the breakthrough single, standard size 20 amp mech.

The new 681M20 switch module brings an unprecedented 20 amp load to the standard mech. Now the stylish looks of the PDL 600 Designer Series can hide a powerful new functionality with obvious benefits for specifiers and electrical contractors.

The new 681M20 mech can handle some very impressive loads:

- 20A
- 16AX fluorescent
- M60

Features

- Wider, deeper terminals for faster, easier termination
- Clearly marked shrouded terminals for increased safety, faster installation
- Terminal screws are a combination Phillips No2/ Square No1 heads, also backed off, for faster installation.





Standard switch modules

Terminals accommodate: 4 x 1.5mm² cables each or 2 x 2.5mm² cables each.
The terminals of Cat 680M32# can also accommodate up to 2 x 6mm² cables each.



681M20 SWITCH MODULE

Ratings: 250V a.c., 50Hz,
20A
16AX Fluorescent,
M60, 2-Way.



681M20P

681M20P NORMALLY OPEN SWITCH MODULE

Ratings: 250V a.c., 50Hz, 20A.
Spring return, 2-Way.
Rocker marked 'PRESS'.

681M20B
As for 681M20P but rocker
marked with 'BELL' symbol.

681M20R
As for 681M20P but rocker
marked 'RESET'.



578M16 INTERMEDIATE SWITCH MODULE

Ratings: 230V - 240V a.c., 50Hz,
16A
8AX Fluorescent



680M20N NEON SWITCH MODULE

Ratings: 250V a.c., 50Hz, 20A.
1-Way.
Neon flying leads can be
connected 'permanently on' or
can be connected to indicate
when the switch is 'on' or 'off'.



587M10 DOUBLE POLE SWITCH MODULE

Ratings: 230V - 240V a.c., 50Hz,
10A Resistive



681M20HWS HOT WATER SWITCH MODULE

Ratings: 250V a.c., 50Hz,
20A Resistive rating only for
hot water system. 2-Way.
Rocker marked 'HWS'.

Available white only.

600/500 Series switch modules

Standard switch modules cont...



32A

680M32

680M32 SWITCH MODULE

Ratings: 230V - 240V a.c., 50Hz., Single Pole, 1-Way, 32A, 20AX Fluorescent, M180.

3mm contact gap. Terminals accommodate 2 x 6mm² conductors.

680M32AC

Marked 'AIR CON'.

680M32H

Marked 'HOB'.

680M32I/O

Marked 'ON/OFF'.

680M32O

Marked 'OVEN'.

680M32R

Marked 'RANGE'.

Switch modules with hinged lids



581M16HFCL

581M16HF

Ratings: 230-240V a.c., 50Hz, 16A resistive, 16AX inductive, 10AX fluorescent, 2-Way.

581M16HFAL

As for 581M16HF but with hinged, protective lid marked 'ALARM'.

581M16HFCL

As for 581M16HF but available white only with clear, hinged, protective lid. Card supplied for ID purposes.

581M16HFF

As for 581M16HF but with hinged, protective lid marked 'FRIDGE'.

581M16FMW

As for 581M16HF but with hinged, protective lid marked 'MICROWAVE'.

581M16HFS

As for 581M16HF but with hinged, protective lid marked 'SENSOR'.



581M16HFS



Dedicated switch modules

Terminals accommodate: 4 x 1.5mm² cables each or 2 x 2.5mm² cables each.



681M20AC

Ratings: 250V a.c., 50Hz, 20A 16AX Fluorescent, M60, 2-Way.

681M20AC

Marked 'AIR CON'.

681M20A/M

Marked 'AUTO/MANUAL'.

681M20D

Marked 'DINING'.

681M20DR

Marked 'DOOR'.

681M20DW

Marked 'DISHWASHER'.

681M20DY

Marked 'DRYER'.

681M20F

Marked 'FAN'.

681M20FG

Marked 'FRIDGE'.

681M20F/R

Marked 'FORWARD/REVERSE'.

681M20G

Marked 'GAS'.

681M20GN

Marked 'GARDEN'.

681M20H

Marked 'HEAT'.

681M20HD

Marked 'HOOD'.

681M20HLF

Marked 'HIGH/FAN/LOW'.

681M20I/O

Marked 'ON/OFF'.

681M20L

Marked 'LIGHT'.

681M20LO

Marked 'LOUNGE'.

681M20MR

Marked 'MIRROR'.

681M20MW

Marked 'MICROWAVE'.

681M20O

Marked 'OUTSIDE'.

681M20PL

Marked 'POOL'.

681M20PU

Marked 'PUMP'.

681M20S

Marked 'SPA'.

681M20SE

Marked 'SENSOR'.

681M20ST

Marked 'STAIRS'.

681M20TV

Marked 'TV'.

681M20WH

Marked 'WASH'.

681M20WT

Marked 'WASTE'.



681M20L



681M20LO



681M20WT

Illuminated modules



510MN

510MN
ILLUMINATED MODULE
Rating: 230V - 240V a.c., 50Hz.
Two terminals for direct connection to neon.
Available with CLEAR, RED, GREEN, AMBER or BLUE coloured lens.
Dedicated Option: Printed 'RCD ON' and available in white only with AMBER lens.

510ML12
ILLUMINATED MODULE
Rating: 12V a.c./d.c.
Available with CLEAR, RED, GREEN, AMBER or BLUE coloured lens.

Module available white only.

510ML24
ILLUMINATED MODULE
Rating: 24V a.c./d.c.
Available with CLEAR, RED, GREEN, AMBER or BLUE coloured lens.

Module available white only.



510MLD24
ILLUMINATED MODULE DEEP LENS
Rating: 24V a.c./d.c.
Available with RED, GREEN, AMBER, BLUE or CLEAR coloured lens.

Module available white only.



610TML24
ILLUMINATED MODULE
Rating: 24V d.c.
Current draw: 20mA.
Red pinpoint LED illumination.
Terminals accommodate 0.5mm² single strand cables or 1mm² multi-strand cables.

Module available white only.



666TML24
ILLUMINATED MODULE
Rating: 24V d.c.
Current draw: 20mA
Red LED illumination visible from any angle.
Terminals accommodate 0.5mm² single strand cables or 1mm² multi-strand cables.

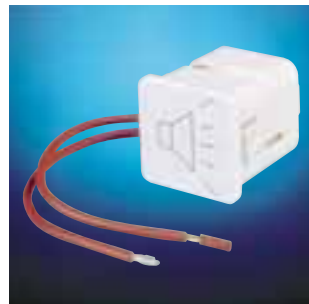
Module available white only.

Buzzer modules



666TMB24
PIEZO BUZZER
Rating: 24V d.c.
Current draw: 20mA.
Sound level: 90dB.
Nominal frequency: 3100 Hz.
Rated for continuous use.
Terminals accommodate 0.5mm² single strand cables or 1mm² multi-strand cables.

Available in White only.



1588M
BUZZER MODULE
Rating: 240V a.c., 50Hz.
Terminal connection: flying leads.
Sound level ≥ 70dB.

Available in White only.

Rotary switch modules

Terminals accommodate 4 x 1.5mm² cables each or 2 x 2.5mm² cables each.
Rating: 230V - 240V a.c., 50Hz, 16A.



687M4

687M3
3-POSITION ROTARY MODULE
0, 1, 2

687M3A/M
3-POSITION ROTARY MODULE
AUTO, OFF, MAN

687M3I/II
3-POSITION ROTARY MODULE
I, 0, II

687M4
4-POSITION ROTARY MODULE
0, 1, 2, 3

687M4F
4-POSITION ROTARY MODULE
0, 1, 2, 3
Dial marked 'Fan'.

600/500 Series switch modules

Tactile switch modules

Terminals accommodate 0.5mm² single strand or 1mm² multi-strand cables.



680TMPB
TACTILE SWITCH MODULE
Rating: 24V d.c., 10mA.
12V d.c., 50mA.
Momentary contact switch,
normally open.



680TMNPB
ILLUMINATED TACTILE SWITCH
MODULE
Rating: 24V d.c., 10mA.
12V d.c., 50mA.
Momentary contact switch,
normally open.
Separate terminals allow
independent wiring of LED.
Available with RED or GREEN LED.
Module available white only.



Dimmer control modules

Terminals accommodate 4 x 1.5mm² cables each or 2 x 2.5mm² cables each.



624M
ROTARY DIMMER MODULE
Rating: 230V - 240V a.c., 50Hz,
400W max.
Lagging Edge.
Incandescent and electronic
transformer loads only.



633M
ROTARY DIMMER MODULE
Rating: 230V - 240V a.c. 50Hz
60W - 300W Leading Edge
For incandescent and wire wound
transformer loads only.



521M
REMOTE CONTROL POT
2-wire remote dimming
potentiometer.
Rating of pot 470K Ohm.
Module available white only.

Fan speed control modules

Terminals accommodate 4 x 1.5mm² cables each or 2 x 2.5mm² cables each.



625C3M

625C3M
3 SPEED 'NO HUM' CEILING
SWEEP FAN CONTROL MODULE
3 speed control for ceiling
sweep fans up to 100VA.
Uses 2µF and 3µF capacitors
to control fan speed.
The module is a two part unit
requiring two module spaces.

625C3/1M
3 SPEED 'NO HUM' CEILING
SWEEP FAN CONTROL MODULE
3 speed control for ceiling
sweep fans up to 100VA.
Uses 1µF and 2µF capacitors
to control fan speed.
The module is a two part unit
requiring two module spaces.

Push button switch modules

Terminals accommodate 4 x 1.5mm² cables each or 2 x 2.5mm² cables each.



581M16PBP
PROTRUDING PUSH BUTTON
MODULE
N/O-N/C.
Ratings to AS1431 Pt. 1.
Insulation Voltage 500V a.c.
Operational Voltage 230V - 240V a.c., 50Hz.
Thermal Current 16A.
Operational Current 4A. 240V a.c.
Operational Current 2A. 415V a.c.
Utilisation Category AC 11.
Degree of Protection IP40.
Available with RED, WHITE or YELLOW button.

Module available white only.



581M16PBS
SHROUDED PUSH BUTTON
MODULE
N/O-N/C.
As for 581M16PBP but available with RED, WHITE, GREEN or BLACK button.



581M16PBM
MUSHROOM PUSH BUTTON
MODULE
N/O-N/C.
As for 581M16PBP but available with RED, WHITE or GREEN button.

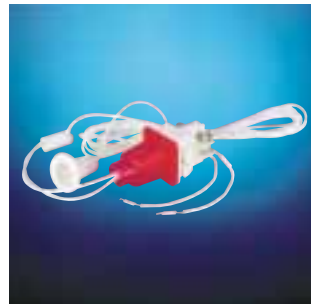


Pull cord switch modules

Terminals accommodate 4 x 1.5mm² cables each or 2 x 2.5mm² cables each.



581M16PS
PULL CORD SWITCH MODULE
Rating: 230V - 240V a.c., 50Hz,
16A Resistive,
10AX Fluorescent and
16A Inductive.
1-Way/2-Way.
Module available white only.



580M16NPS
PULL CORD SWITCH MODULE
WITH NEON
Rating: 230V - 240V a.c., 50Hz, 16A.
1-Way.
White module with outer body red transparent.
Neon flying leads can be connected 'permanently on' or can be connected to indicate when the switch is 'on' or 'off'.



573MM
MOMENTARY CONTACT
PULL CORD SWITCH MODULE
Rating: 24V, 12A.
N/O - N/C.
White module with red button and actuator.

Permanent connection module

Terminals accommodate 4 x 1.5mm² cables each or 2 x 2.5mm² cables each.



551M2
PERMANENT CONNECTION
MODULE
Rating: 230V - 240V a.c.,
50Hz, 16A.
'Bell Mouth' cable entry
accommodates flexible cords
up to 10mm diameter.

600/500 Series switch modules

Blank modules



500B

500B BLANK MODULE

500BST
Marked 'START'.
Module available white only.

500BSP
Marked 'STOP'.
Module available white only.

500BESP
Marked 'EMERGENCY STOP'.
Module available white only.



500ID
BLANK MODULE FOR CIRCUIT ID
Module comes with blank label for printing appliance details or circuit identification. A clear, clip-on cover protects the label.

Communication modules



2-wire

617M2
BT OUTLET JACK
Two-wire outlet for two-wire installations.
IDC connections.
Two-wire outlets are not compatible with three-wire systems.
Approved to Telepermit PTC 223.



500TT
IDC TERMINATING TOOL
For use with Cat 617M2, 518M and 519M6.
Available white only.



518M
BT OUTLET JACK
IDC connections.
For secondary connections.
Available white only.



2-wire

619MD
DATAPLUS CAT 6 RJ45 MODULE
IDC connections.
Data and voice connection.
Compliant to category 5, EIA-568.
Allows for both 568A and 568B wiring options.
Available in white or black only.



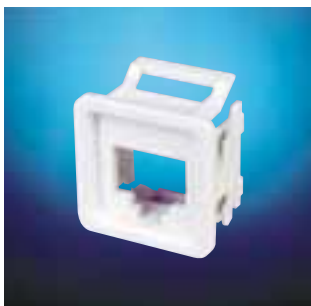
519M6
FCC 6-WAY OUTLET JACK
IDC connections.
For secondary connections.



Communication modules cont...



**619MDL
DATAPLUS CAT 6 RJ45
MODULE WITH HINGED LID**
As for 619MD but with hinged,
gravity lid to facilitate circuit
identification and protect data socket
from dust when not in use.



**619MKC
DATA JACK ADAPTOR MODULE**
Accepts Cat 5 RJ45 data jacks in the
Keystone form from Krone, Amp,
Hubbell, Suttle, HPM or Dataplus.



**619MKLC
DATA JACK ADAPTOR MODULE
WITH HINGED LID**
As for 619MKC but with hinged,
gravity lid to facilitate circuit
identification and protect data
socket from dust when not in use.



**619MAC
DATA JACK ADAPTOR MODULE**
Accepts Cat 5 RJ45 data jacks from
AT&T and Suttle.



**619MALC
DATA JACK ADAPTOR MODULE
WITH HINGED LID**
As for 619MAC but with hinged,
gravity lid to facilitate circuit
identification and protect data
socket from dust when not in use.



**619MM
DATA JACK ADAPTOR MODULE**
Accepts Cat 5 RJ45 data jacks from
Modtap.



528MF

**528MF
COAXIAL CABLE SOCKET WITH
REAR 'F' CONNECTION**
Rating: 75 Ohm.
PAL type socket with 'F' connect
in rear. Marked 'TV'.

528MFI
As for 528MF but marked 'IN'.

528MFO
As for 528MF but marked 'OUT'.

528MFS
As for 528MF but marked 'SKY'.

528MFV
As for 528MF but marked 'VIDEO'.

600/500 Series switch modules

Communication modules cont...



528M

**528M
COAXIAL CABLE CONNECTION
SOCKET**

Rating: 75 Ohm.
PAL type socket marked 'TV'.
Clamp terminals.

528MI
PAL ISOLATED MODULE
Rating: 75 Ohm.
PAL type socket marked 'TV'.
Cable connection coaxial socket
module. Mains isolated for
240V a.c. For safety in hazardous
environments.

529M
As for 528M but marked 'FM'.



**509M
TV-FM SPLITTER SOCKET
MODULE**
Single coaxial connection to
combined TV-FM aerial.
Suits 75 Ohm coaxial cable.
Comprising screw terminal for
signal core and saddle clamp for
earth screen.
Marked 'FM' and 'TV' on
respective modules.
Suits 662VH and 682VH.
Can be used as an outlet on
master aerial systems.



540MRD

**540MWH
RCA A/V CONNECTION SOCKET**
Solder type terminals. Socket
coloured WHITE.

540MBK
As for 540MWH but socket
coloured BLACK

540MBL
As for 540MWH but socket
coloured BLUE

540MGN
As for 540MWH but socket
coloured GREEN

540MRD
As for 540MWH but socket
coloured RED

540MYL
As for 540MWH but socket
coloured YELLOW



**516M
BNC SOCKET**
Rating: 50 Ohm.
Solder terminals.



615MF

**615MF
'F' TYPE CONNECTOR MODULE**
'F' Female/Female through
connector.

615MFTV
As for 615MF but marked 'TV'.



**615MST
'ST' TYPE FIBRE OPTIC
CONNECTOR MODULE**
'ST' multi-mode through connector.
Comes with two yellow dust covers
in place.



615MBB

**615MBB
BANANA BINDING POST**
Rating: 12V - 28V, 10A.
Suits standard banana plug.
Accepts wire and forked terminal
connections.
Black band.

615MRB
As for 615MBB but with a red band.

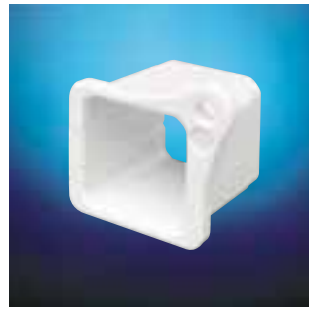


Module shroud



**680S
MODULE SHROUD**
Flame retardent material.
Insulates up to 3000V.
Suits all 500 Series and
600 Designer Series modules.
Available grey only.

Module ejector



**600ME
MODULE EJECTOR**
For removing 500 Series
and 600 Designer Series
modules from plates.
Collapses module clip-in legs
simultaneously and ejects
module.
Supplied in various colours.

Batten holder



**629
BATTEN HOLDER WITH
CLIP-ON COVER PLATE**
Base: 71mm
Mounting centres: 51mm
4 terminals, each capable of
accepting 4 x 2.5mm² cable.
Terminals are shrouded and
fingerproofed.
Backed-off terminal screws all face
one direction.
Rating: 250V a.c., 50Hz,
150W max.
Available in White only.
Metal cover plate N/A.

Ceiling mounting base



**629F
CEILING MOUNTING BASE**
Diameter: 90mm
For use with Cat 629 Batten Holder
or Cat 44A Ceiling Rose.
Available white only.



500 Series

Switch plates

Accessories on pages 42 - 47 are from the 500 Series range; there is no equivalent in the 600 Designer Series. Features of these products include low-gloss finish, front-loading modules, backed-off terminal screws, ready-to-go fixing screws, Phillips/slotted screw heads, and fixed wall plates.



Standard switch plates



581VH

581VH
ONE APERTURE PLATE
Plate: 118mm x 74mm.
Mounting centres: 84mm.

582VH
TWO APERTURE PLATE
As for 581VH but with 2 apertures.



584VH

584VH
FOUR APERTURE PLATE
As for 581VH but with 4 apertures.

586VH
SIX APERTURE PLATE
As for 581VH but with 6 apertures.



550VH
BLANK PLATE
Plate: 118mm x 74mm.
Mounting centres: 84mm.

Suits Cat 89 Mounting Block,
Cat 144 Flush Box and Cat 145V,
148V or 148H Mounting Bracket.

Architrave switch plates



561VH

561VH
ONE APERTURE PLATE
Plate: 78mm x 32mm.
Mounting centres: 62mm.

Suits Cat 560 Mounting Block.

562VH
TWO APERTURE PLATE
Plate: 78mm x 32mm.
Mounting centres: 62mm.

Suits Cat 560 Mounting Block.



564VH
FOUR APERTURE PLATE
Plate: 130mm x 32mm.
Mounting centres: 114mm.

Suits Cat 565 Mounting Block.

Worktop switch plates



**588VH
ONE APERTURE PLATE**
Plate: 100mm x 48mm.
Mounting centres: 80mm.

Suits Cat 558 Mounting Bracket and Cat 567S Mounting Block.



**589VH
TWO APERTURE PLATE**
Plate: 100mm x 48mm.
Mounting centres: 80mm.

Suits Cat 558 Mounting Bracket and Cat 567S Mounting Block.

Surface switch plates



**571R
ONE APERTURE PLATE**
Plate: 56mm diameter.
Mounting centres: 40mm.

Suits Cat 530 Round Mounting Block.



**573R
ONE APERTURE PLATE**
Plate: 66mm diameter.
Mounting centres: 50mm at 45°.

Plate can be mounted on round conduit box.

Telephone switch plates



**514VH9/1
ONE APERTURE PLATE**
Plate: 118mm x 74mm.
Mounting centres: 84mm.

Suits DB9 Panel Mount Outlet.

**514VH9/2
TWO APERTURE PLATE**
As for 514VH9/1 but with 2 apertures.

514VH9/2



**511VH
TELEPHONE JUNCTION PLATE**

Plate: 118mm x 74mm.
Mounting centres: 84mm.
For joining up to six sets of telephone cables using IDC terminals.
Approved to Telepermit PTC 203.



**524VH
TELEPHONE COVER PLATE**
Plate: 118mm x 74mm.
Mounting centres: 84mm.
Plate fits over Telecom square plate to allow conversion to standard plate size.

Surface mounting enclosure



**574E
SURFACE MOUNTING ENCLOSURE**

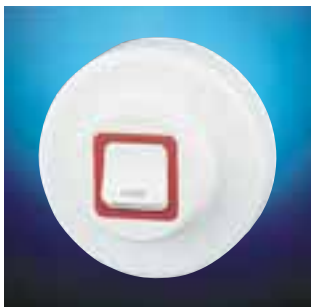
Enclosure suitable for use with any 500 Series and 600 Designer Series mechanism.

Surface switch



571
ROUND SWITCH SURFACE KIT
 Plate: 56mm diameter.
 Mounting centres: 40mm.
 Rated at 230V - 240V a.c. Made up of 571R with 581M16 2 Way switch module and 530 Round Surface Mounting Block.

Hot water switches



572
HOT WATER SYSTEM SWITCH
 Plate: 66mm diameter.
 Mounting centres: 50mm at 45°. Round surface mounting.
 Rated at 230V - 240V a.c. Fitted with 580M20HWS 1 Way 20A switch for conduit box mounting.
 Block and Cat 144 Flush Box.



574
HOT WATER SYSTEM SWITCH
 Plate: 79mm x 52mm.
 Surface mounting.
 Rated at 230V - 240V a.c. Two fixing points, fitted with 580M20HWS 1 Way 20A switch. Clamp provided for conduit and flexible cord.
 2 x 501T terminals included.



548BS
SOLAR WATER HEATER BOOSTER SWITCH
 Plate: 118mm x 74mm.
 Mounting centres: 84mm.
 Rated at 230V - 240V a.c., 20A. Operates when a voltage across the line terminals is present. Provides a boost of electric heat when water usage exceeds the capability of the solar water heating system.

Ceiling switch



573
PULL CORD SWITCH
 Plate: 66mm diameter.
 Mounting centres: 50mm.
 Rated at 230V - 240V a.c. Fitted with 581M16PS 2 Way Pull Cord Switch module.
 16A resistive, 16A inductive, 8AX fluorescent.

Keylock switches



568

568
KEY LOCK SWITCH
LOCKABLE "ON" OR "OFF"
 Plate: 118mm x 74 mm.
 Mounting centres: 84mm.
 Rated at 230V - 240V a.c., 16A, 2 Way.

Suits Cat 89, 536 or 537 Mounting Block, Cat 144 Flush Box and Cat 145V, 146V or 148V Mounting Bracket.

568ON
KEY LOCK SWITCH
LOCKABLE "ON"
 Plate: 118mm x 74 mm.
 Mounting centres: 84mm.
 Rated at 230V - 240V a.c., 16A, 2 Way.

Suits Cat 89, 536 or 537 Mounting Block, Cat 144 Flush Box and Cat 145V, 146V or 148V Mounting Bracket.

568OFF
KEY LOCK SWITCH
LOCKABLE "OFF"
 Plate: 118mm x 74 mm.
 Mounting centres: 84mm.
 Rated at 230V - 240V a.c., 16A, 2 Way.

Suits Cat 89, 536 or 537 Mounting Block, Cat 144 Flush Box and Cat 145V, 146V or 148V Mounting Bracket.

Block and Cat 144 Flush Box.

Time switch



546
UNIVERSAL TIME SWITCH
 Plate: 118mm x 74 mm.
 Mounting centres: 84mm.
 Rated at 230V-240V a.c., 10AX
 resistive and inductive.
 Can be set to switch a load either
 ON or OFF for a selected time period
 from 1 sec to 31.5 hours.

Automatic lighting sensor switch



556
PIR SENSOR SWITCH
 Plate: 118mm x 74 mm.
 Mounting centres: 84mm.
 Rated at 230V - 240V a.c.
 500W max incandescent.
 250W max fluorescent.
 Interior sensor which replaces
 standard switch and turns lights
 ON automatically when it senses
 movement.
 Field of view - 90° elliptical.
 Range - 5m forward and 2m
 either side of centre.
 Time setting - 20 seconds to
 10 minutes.
 Lux setting - 5 Lux upwards.
 Suits Cat 89, 536 or 537
 Mounting Block, Cat 144 Flush
 Box and Cat 145V, 146V or 148V
 Mounting Bracket.

Range switches



545

545
SINGLE POLE SWITCH
 Plate: 118mm x 74 mm.
 Mounting centres: 84mm.
 Rated at 230V - 240V a.c.,
 45AX inductive and 45A resistive,
 1 Way.
 Has "E" & "N" loop terminals.
 Suits Cat 89, 536 or 537
 Mounting Block, Cat 144 Flush
 Box and Cat 145V, 146V or 148V
 Mounting Bracket.

547
DOUBLE POLE SWITCH
 Plate: 118mm x 74 mm.
 Mounting centres: 84mm.
 Rated at 415V a.c., 45AX inductive
 and 45A resistive, 1 Way.
 Suits Cat 89, 536 or 537
 Mounting Block, Cat 144 Flush
 Box and Cat 145V, 146V or 148V
 Mounting Bracket.

Range socket



576
RANGE SOCKET
 Plate: 118mm x 74mm.
 Mounting centres: 84mm.
 Rated at 230V- 400V a.c., 32A max,
 single or two phase cookers. 4 pin.
 Recommended for use with 6mm²
 two core with Earth or three core
 with Earth TPS.
 Complies with AS3100 and AS3131.
 Suits Cat 144 Flush Box or
 Cat 89 or 537 Mounting Block.
 Compatible with Cat 976
 Range Plug.

500 Series Sockets

If a plug is partially pulled out of a PDL 500 Series power socket, the plug pins only remain live while there is a gap of 5mm or less between the socket face plate and the plug - not enough room for small fingers to touch the live pins. For additional safety, the socket pin holes are fitted with safety shutters.



Switched sockets

Switched sockets comply with the following Standards: AS3100, AS3112 and NZS198.



591F
SINGLE SWITCHED SOCKET
Plate: 118mm x 74mm.
Mounting centres: 84mm.
Rated at 230V - 240V a.c., 10A.

Suits Cat 89, 536 or 537
Mounting Block, Cat 144 Flush
Box and Cat 145V, 146V or 148V
Mounting Bracket.



592F
DOUBLE SWITCHED SOCKET
Plate: 118mm x 74mm.
Mounting centres: 84mm.
Rated at 230V - 240V a.c., 10A.

Suits Cat 89, 536 or 537
Mounting Block, Cat 144 Flush
Box and Cat 145V, 146V or 148V
Mounting Bracket.



594F
SINGLE SWITCHED SOCKET
Plate: 118mm x 74mm.
Mounting centres: 84mm.
Rated at 230V - 240V a.c., 10A.

Suits Cat 89, 536 or 537
Mounting Block, Cat 144 Flush
Box and Cat 146H or 148H
Mounting Bracket.



595F
DOUBLE SWITCHED SOCKET
Plate: 118mm x 74mm.
Mounting centres: 84mm.
Rated at 230V - 240V a.c., 10A.

Suits Cat 89, 536 or 537 Mounting
Block, Cat 144 Flush Box and Cat
146H or 148H Mounting Bracket.



598F
SINGLE SWITCHED SOCKET
Plate: 100mm x 48mm.
Mounting centres: 80mm.
Rated at 230V - 240V a.c., 10A.

Suits Cat 558 Mounting Bracket
or Cat 567S Mounting Block.

598FN
As for 598F but fitted with neon
to indicate "ON".

598F



599F
DOUBLE SWITCHED SOCKET
Plate: 170mm x 48mm.
Mounting centres: 150mm.
Rated at 230V - 240V a.c., 10A.

Suits Cat 559 Mounting Bracket
or Cat 567L Mounting Block.

599FN
As for 599F but fitted with neon
to indicate "ON".

599F

Unswitched socket



593
SINGLE UNSWITCHED SOCKET
 Split-level plate: 118mm x 74mm.
 Mounting centres: 84mm.
 Rated at 230V - 240V a.c., 10A.

Suits Cat 89, 536 or 537
 Mounting Block, Cat 144 Flush
 Box and Cat 145V, 146V or 148V
 Mounting Bracket.

Square plate sockets



570S
SQUARE PANEL MOUNT SOCKET
 Plate: 51mm x 51mm x 9mm.
 Mounting centres: 38mm.
 Rated at 230V - 240V a.c., 10A.
 Supplied with panel clamp for fitting
 through rectangular entry
 38mm wide x 31mm high.

Round plate sockets



570R
ROUND PANEL MOUNT SOCKET
 Plate: 56mm diameter.
 Mounting centres: 40mm.
 Rated at 230V - 240V a.c., 10A.

Suits Cat 530 Round
 Mounting Block.

Shaver sockets



575
SHAVER SOCKET
 Plate: 118mm x 74mm.
 Mounting centres: 84mm.
 Rated at 230V - 240V a.c. primary
 and 240V-115V a.c. secondary,
 20VA max.
 Vertical or horizontal mounting.
 Double insulated.
 Switches on when plug is inserted.
 Comes complete with Cat 557
 spacer to be used with Cat 89
 Mounting Block for surface
 mounting.

Also comes complete with Cat 144
 Flush Box. (Refer also to 575VRCD
 P21.)



1575
SHAVER SOCKET
 Plate: 146mm x 90mm.
 Mounting centres: 120mm.
 Rated at 230V - 240V a.c. primary
 and 240V - 115V a.c. secondary,
 20VA max.
 Vertical or horizontal mounting.
 Double insulated.
 Switches on when plug is inserted.

This socket replaces PDL's 63T
 Shaver Socket.

Threaded socket



593LRP
**SINGLE THREADED SOCKET
 WITH PLUG**
 Plate: 118mm x 74mm.
 Mounting centres: 84mm.
 Rated at 230V - 240V a.c., 10A.
 Comes complete with Cat 905LR.

Suits Cat 537 or 89 Mounting Block,
 Cat 144 Flush Box and 145V, 146V
 or 148V Mounting Bracket.

RCD protection devices



596RCD
**POWERGUARD PLATE
 MOUNTED RCD**
 Plate: 118mm x 74mm.
 Mounting centres: 84mm.
 Rated at 230V - 240V a.c., 20A.
 Tested to AS3190:1990 and
 AS3100:1990.

Plate mounted RCD which protects
 all socket outlets or permanently-
 wired appliances wired downstream.
 Switches off the current within
 30 ms if electrical leakage to earth
 exceeds as little as 30mA.

Suits Cat 89DP Mounting Block,
 Cat 144 Flush Box and Cat 145V,
 146V or 148V Mounting Bracket.

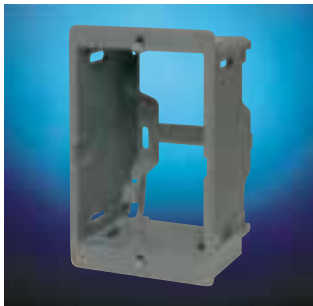


596/56RCD
**POWERGUARD PLATE
 MOUNTED RCD**
 Plate: 118mm x 74mm. Mounting
 centres: 84mm. Rated at 230V-240V
 a.c., 20A. Protected to IP56.
 Tested to AS3190:1990 and
 AS3100:1990. Its IP56 flush plate
 allows it to be used in damp or dusty
 conditions. Switches off the current
 within 30 ms if electrical leakage
 to earth exceeds as little as 30mA.

Suits Cat 89DP Mounting Block,
 Cat 144 Flush Box and Cat 145V,
 146V or 148V Mounting Bracket.



Flush boxes



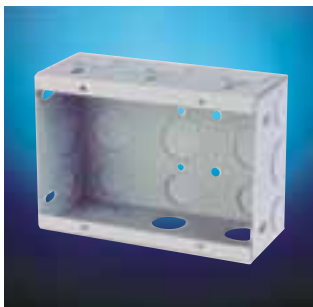
144PT

144PT FLUSH BOX

Plastic threaded plate fixing holes.
84mm x 52mm opening.
84mm product mounting centres,
48mm deep.
Large cable entries for ease of wiring.
Side mounting by nails.
Provision for horizontal or vertical
mounting to studs.
Provision for angled screw fixing
through side wall.

144MT FLUSH BOX

As for 144PT but with threaded
brass plate fixing holes.



149 FLUSH BOX

Size: 135mm x 96mm x 57mm deep.
Mounting centres: 84mm
Suits Cat 675HRCD and dual and
combination cover plates.
Comes complete with segregation
barrier and earthing terminal.

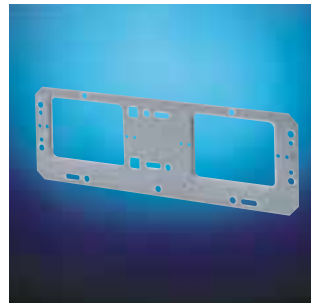


Mounting brackets



146H HORIZONTAL BRACKET

Nailed stud bracket for standard
plate size 600 Designer Series
accessories.
84mm product mounting centres.



146T2 TWIN STUD BRACKET

Nailed stud bracket for two standard
plate size 600 Designer Series
accessories.
The bracket's design provides for
segregation of services as per
AS/NZS 3000:2000, Section 3.9.9.3.
84mm product mounting centres.

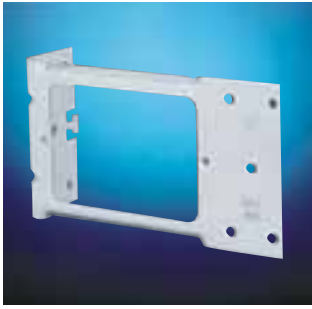


145V VERTICAL BRACKET

84mm product mounting centres.
Nails can be inserted at the side.

Suits all standard plate size
600 Designer Series accessories.

Mounting brackets cont...



148H
HORIZONTAL BRACKET
84mm product mounting centres.
Opening 52mm x 76mm.
Suits all standard plate size
600 Designer Series accessories.



148V
VERTICAL BRACKET
84mm product mounting centres.
Opening 52mm x 76mm.
Suits all standard plate size
600 Designer Series accessories.



558
**HORIZONTAL BRACKET FOR
WORKTOP PLATES**
80mm product mounting centres.
Suits Cat 688VH, 689VH, 698, 698N,
698R and 698/15.

558

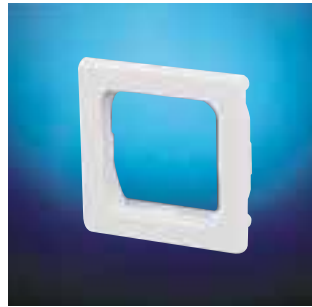
559
**HORIZONTAL BRACKET FOR
WORKTOP PLATES**
150mm product mounting centres.
Suits Cat 699, 699N, 699TB,
699TBR and 699TB/15.



Module mounting clips



539
MOUNTING CLIP
40mm mounting centres for
screw fixing.
Suits all 500 Series and
600 Designer Series modules.



533
PANEL MOUNTING CLIP
A 30mm square hole is required.
Clip will accommodate metal
thickness from 20SWG to 16SWG
(1.0mm - 1.5mm).
Suits all 500 Series and
600 Designer Series modules.



Mounting accessories

Mounting blocks and spacers



89

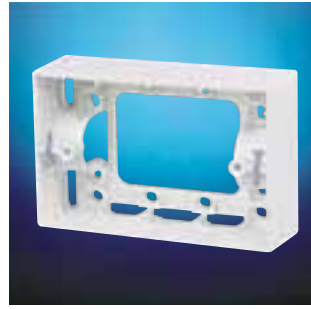
89
UNIVERSAL MOUNTING BLOCK
 Size: 122mm x 80mm x 30mm deep.
 84mm product mounting centres.

Suits all standard size 600
 Designer Series accessories.

Available New Zealand only.

89SP
 As for 89 but 18mm deep.

89DP
 As for 89 but 37mm deep.



537
DEEP MOUNTING BLOCK
 Size: 120mm x 77mm x 35mm deep.
 84mm product mounting centres.
 Knockouts as for Cat 536.

Suits all standard size 600
 Designer Series accessories.



89M
UNIVERSAL MOUNTING BLOCK
 Size: 122mm x 80mm x 37mm deep.
 84mm product mounting centres.

Suits all standard size 600
 Designer Series accessories.

Available Australia only.



531
SPACER (STANDARD SIZE)
 Size: 118mm x 75mm x 13mm deep.
 84mm product mounting centres.



89DI
DOUBLE INSULATED MOUNTING BLOCK
 Size: 122mm x 80mm x 37mm deep.
 84mm product mounting centres.
 4 moulded conduit entry points
 (20mm & 25mm options).

Suits all standard size 600
 Designer Series accessories.

Available in White only.



557
MOUNTING BLOCK SPACER
 Size: 118mm x 75mm x 12mm.
 For use with Cat 89 Mounting
 Block for surface mounting extra
 deep accessories eg Cat 675
 Shaver Socket.



536
SHALLOW MOUNTING BLOCK (STANDARD SIZE)
 Size: 119mm x 76mm x 25mm deep.
 84mm product mounting centres.
 4 x 25mm knockouts,
 12 x 20mm knockouts,
 12 x 16mm knockouts,
 12 TPS cable knockouts.

Suits all standard size 600
 Designer Series accessories.



560
SINGLE ARCHITRAVE MOUNTING BLOCK
 Size: 79mm x 33mm x 25mm deep.
 62mm product mounting centres.
 4 x 16mm knockouts,
 4 x TPS cable knockouts.

Suits Cat 661VH and 662VH
 Architrave Plates.



565
DOUBLE ARCHITRAVE MOUNTING BLOCK
 Size: 132mm x 33mm x 25mm deep.
 2 mounting holes.
 114mm product mounting centres.
 8 x 16mm knockouts,
 8 x TPS cable knockouts.

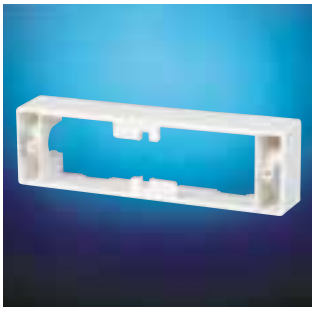
Suits Cat 663VH and 664VH
 Architrave Plates.



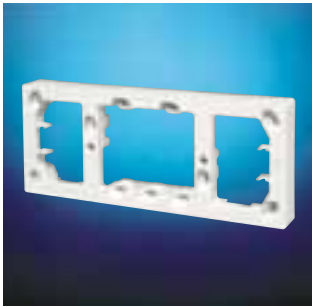
567S
SHORT WORKTOP MOUNTING BLOCK
 Size: 103mm x 51mm x 30mm.
 80mm product mounting centres.
 4 x 16mm knockouts,
 4 x TPS cable knockouts.

Suits Cat 688VH, 689VH, 698,
 698N, 698/15 and 698R.

Mounting blocks and spacers cont...



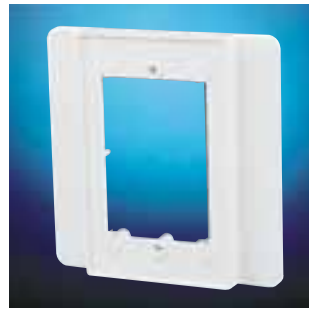
**567L
LONG WORKTOP
MOUNTING BLOCK**
Size: 173mm x 51mm x 30mm.
150mm product mounting centres.
8 x 16mm knockouts,
8 x TPS cable knockouts.
Suits Cat 699, 699N, 699TB,
699TB/15 and 699TBR.



640RC

**640RC
FOUR GANG MOUNTING BLOCK**
Size: 196mm x 84mm x 19mm high.
84mm product mounting centres.
7 x 20mm Knock-outs.
Round conduit adaptor 25mm.
Suits Cat 644, 644N, 644P, 644/15,
641, 641N, 641P and 641/15.
Available in White only.
640SC
Includes square conduit adaptor
25.5mm x 16.5mm.

Conversion plate



**538
CONVERSION PLATE**
Plate: 118mm x 118mm.
Mounting centres (plate to box):
84mm x 46mm.
Plate mounting centres: 84mm.
Plate adapts existing 2-gang
installation to 600 Designer Series
standard plate size.

Floor mounted accessories

Floor socket



**535F
FLUSH FLOOR SOCKET**
Ratings: 230V - 240V a.c., 50Hz,
10A.
Projection above the floor: 10mm
at highest point.
Projection below the floor: 52mm.
Overall diameter: 130mm
Cut-out for the base: 97-100mm
diameter.
Knockouts: 1 x 25mm.
Conduit entries: 2 x 25mm.
Available in Grey only.



Power tower



**535
POWER TOWER**
Size: 158mm x 158mm x 140mm high.
Takes 4 x standard, vertical
600 Designer Series plates.
Fitted with divider for segregated
services.
1 central 25mm conduit entry and
4 x 25mm knockouts.
Cover has aperture for 500 Series
and 600 Designer Series modules.

Multi-gang stainless steel switch panels

PDL's switch panels accept all 500 Series and 600 Designer Series modules but they must be ordered separately. Standard plate finish is brushed stainless steel but polished brass plates are available on request. Mounting Boxes are supplied separately.



Stainless steel switch plates



534P8S
STAINLESS STEEL SWITCH PLATE
 8-Way
 Size: 128mm x 220mm.
 Supplied with 8 x Cat 533 White
 Module Mounting Clips.



534P16S
STAINLESS STEEL SWITCH PLATE
 16-Way
 Size: 220mm x 220mm.
 Supplied with 16 x Cat 533 White
 Module Mounting Clips.



534P24S
STAINLESS STEEL SWITCH PLATE
 24-Way
 Size: 313mm x 220mm.
 Supplied with 24 x Cat 533 White
 Module Mounting Clips.

Switch panel wall boxes



534B8
SWITCH PANEL WALL BOX
 8-Way
 Size: 108mm x 200mm x 60mm deep.
 1 earth terminal.
 Side knockouts: 2 x 38mm,
 4 x 25/21mm.
 Back knockouts: 11 x 38mm,
 2 x 25/21mm.



534B16
SWITCH PANEL WALL BOX
 16-Way
 Size: 200mm x 200mm x 60mm deep.
 1 earth terminal.
 Side knockouts: 2 x 38mm,
 4 x 25/21mm.
 Back knockouts: 2 x 38mm,
 4 x 25/21mm.



534B24
SWITCH PANEL WALL BOX
 24-Way
 Size: 293mm x 200mm x 60mm deep.
 1 earth terminal.
 Side knockouts: 2 x 38mm,
 4 x 25/21mm.
 Back knockouts: 3 x 38mm,
 4 x 25/21mm.

Terminals



501T

**501T
SINGLE SCREW TERMINAL 40A**

Terminal accepts 3 x 6mm² or 4 x 2.5mm² conductors. 415V a.c. 50Hz.

Available in orange colour only.

**501JAR-50
SINGLE SCREW TERMINALS 40A,
BULK (50 TERMINALS)**

Jar of 50 x 501T single screw terminals (40A).

Terminals accept 3 x 6mm² or 4 x 2.5mm² conductors.

**502T
TWIN SCREW TERMINAL 40A**

Terminal accepts 3 x 6mm² or 4 x 2.5mm² conductors. 415V a.c. 50Hz.

Available in orange colour only.

**502JAR-35
TWIN SCREW TERMINAL 40A,
BULK (35 TERMINALS)**

Jar of 35 x 502T twin screw terminals (40A).

Terminals accept 3 x 6mm² or 4 x 2.5mm² conductors.

Junction boxes



**544
JUNCTION BOX**

Size: 67mm x 67mm x 37mm deep. Rated at 32A, 500V.

4 mounting holes 51mm x 51mm. Includes 4 x 501T terminals, fully shrouded.

Each terminal accommodates 4 x 2.5mm² cables.



**544J
JUNCTION BOX**

Size: 65mm x 92mm x 45mm deep. Rated at 40A, 500V.

Includes 1 twin and 3 single screw terminals, fully shrouded.

Each terminal accommodates 3 x 6mm² cables.

Comes with two ready-fix nails in the base.

Focus on Risk Management



Surge Protection

PDL's surge protected switched socket protects valuable electronic equipment from the damaging effects of high voltage surges.

All sockets on the same circuit as the 695SP are protected against power surges upstream and downstream.

The front-loading surge protection module can be replaced easily and safely, and there is provision for tamperproofing.

PDL's surge protected switch socket is featured on page 23.



Waterproof Switches

PDL's innovative waterproof switches are designed for bathrooms, ensuites, kitchens and laundries. They're also ideal for switching appliances such as waste disposals and dishwashers, offering protection from an electric shock when an appliance or a light is switched on by someone with wet hands.

PDL waterproof switches meet the requirements for installation in Zone 1 as per AS/NZS 3000:2000, Sections 7.1, 7.2 and 7.6 and NZS 3000:1997, Sections 702.9.2 and 702.9.3.

Waterproof switches are featured on pages 9 & 10.



Front-Loading Modules

Front-loading switch modules cannot be pushed back into the wall cavity by frontal impact, ensuring end-user safety by preventing accidental access to live areas.



Safety Shuttered Sockets

For additional safety, all PDL 600 Designer Series socket pin holes are fitted with safety shutters.



Safety Switches

PDL's safety switches (Cat 696RCD-10 and 696RCD-30) provide 10mA or 30mA RCD protection for a number of socket outlets or permanently-wired appliances on the same circuit.

The Powerguard RCDs switch off the current within 30 milliseconds (30 thousandths of a second) if electrical leakage to earth exceeds as little as 10mA (10 milliamps) or 30mA (30 milliamps).

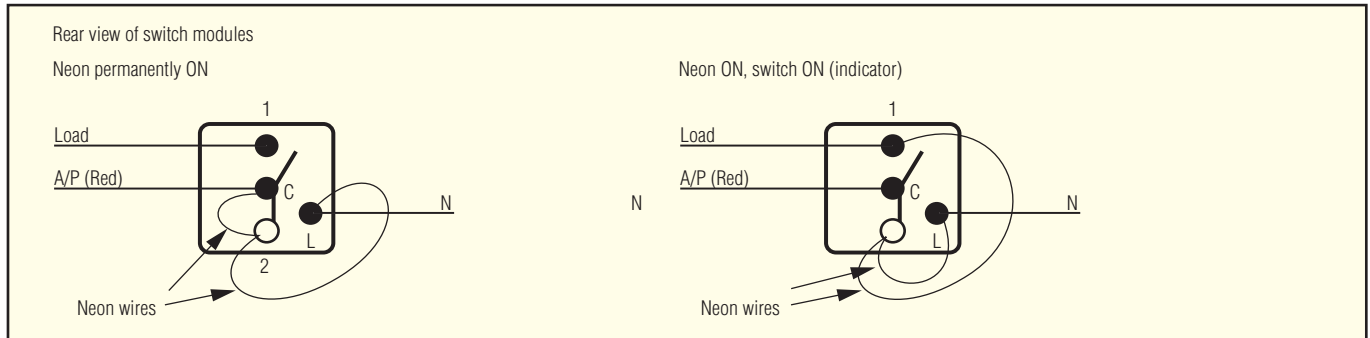
That could mean the difference between life and death.

Safety switches are featured on page 22.

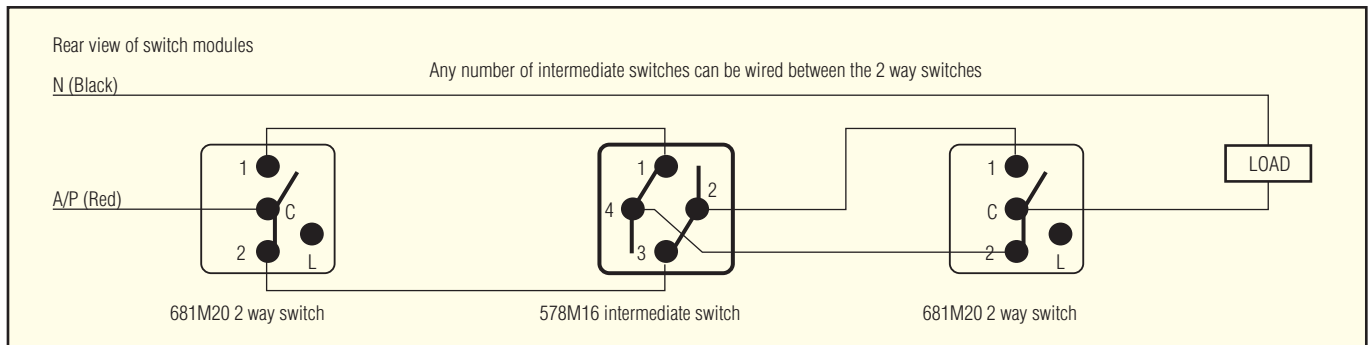
Technical data

Wiring diagrams

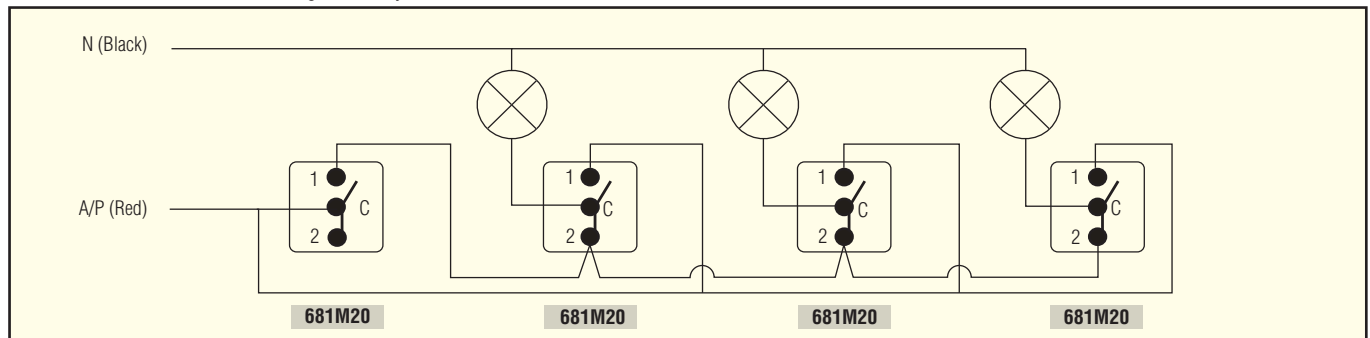
680M20N & 580M16NPS one way switches with neon



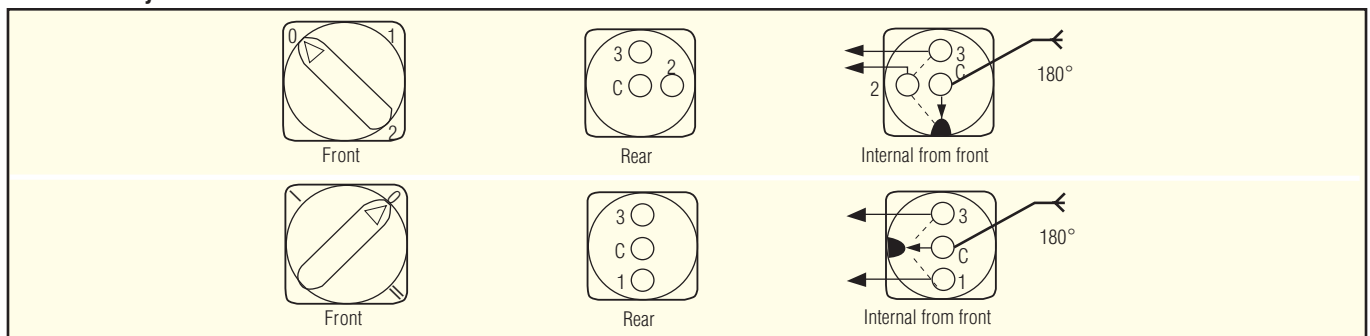
578M16 Intermediate Switch



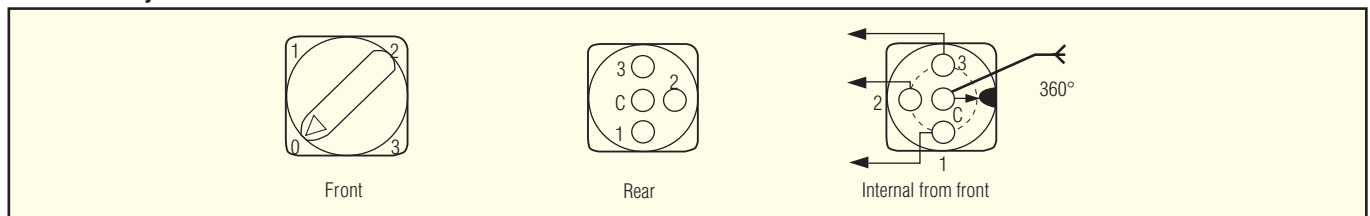
681M20 Module Master Switching for Security



687M3 Rotary Switch Module

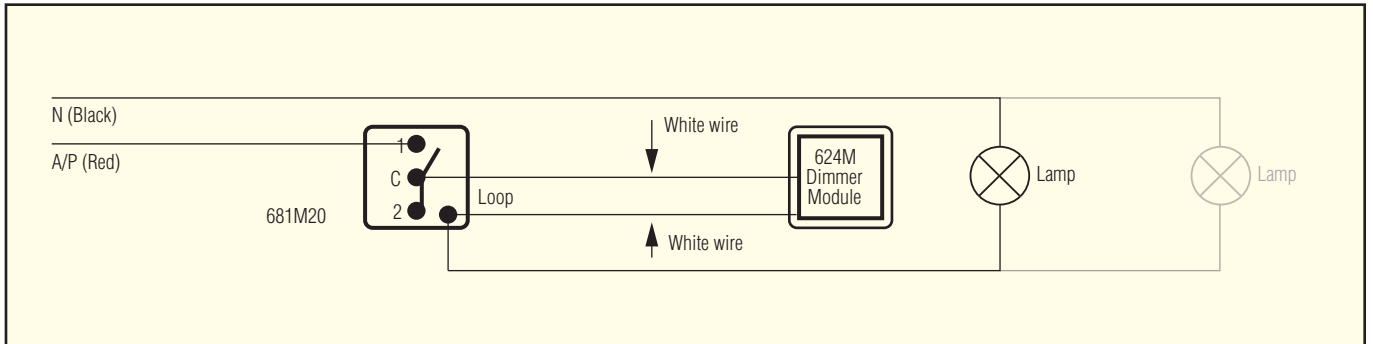


687M4 Rotary Switch Module

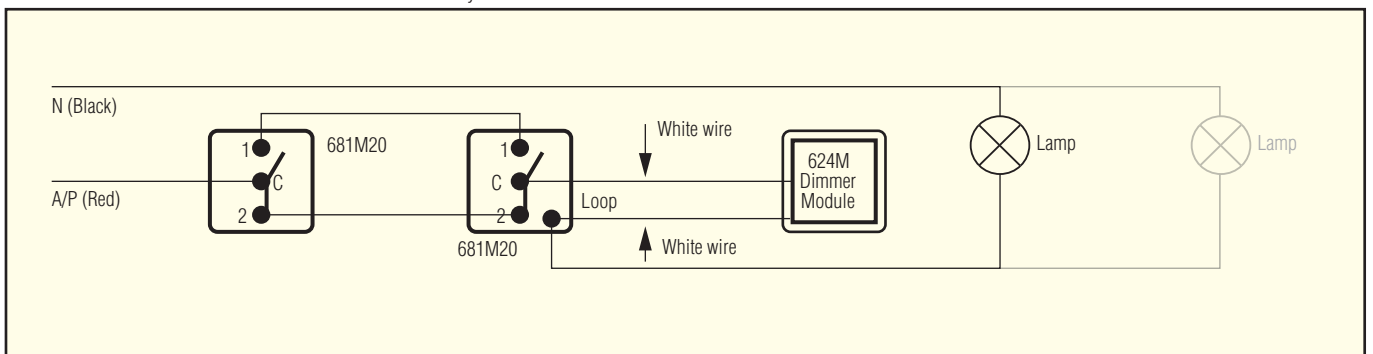


Wiring diagrams

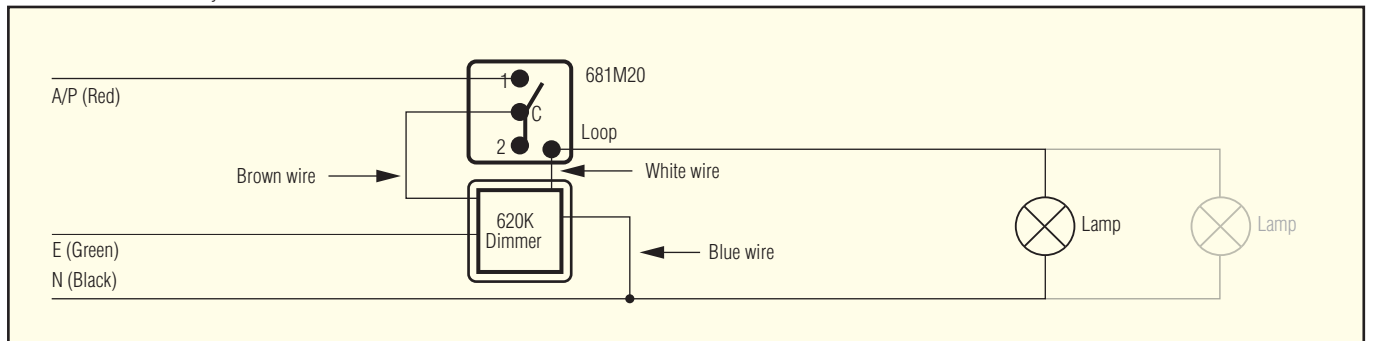
624 Dimmer & 624M Dimmer Module One way circuit



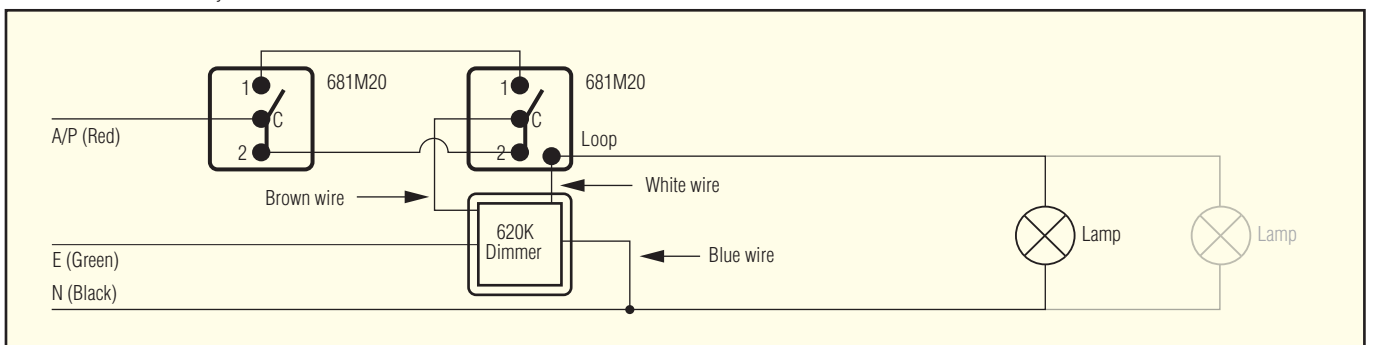
624 Dimmer & 624M Dimmer Module Two way circuit



620K Dimmer One way circuit



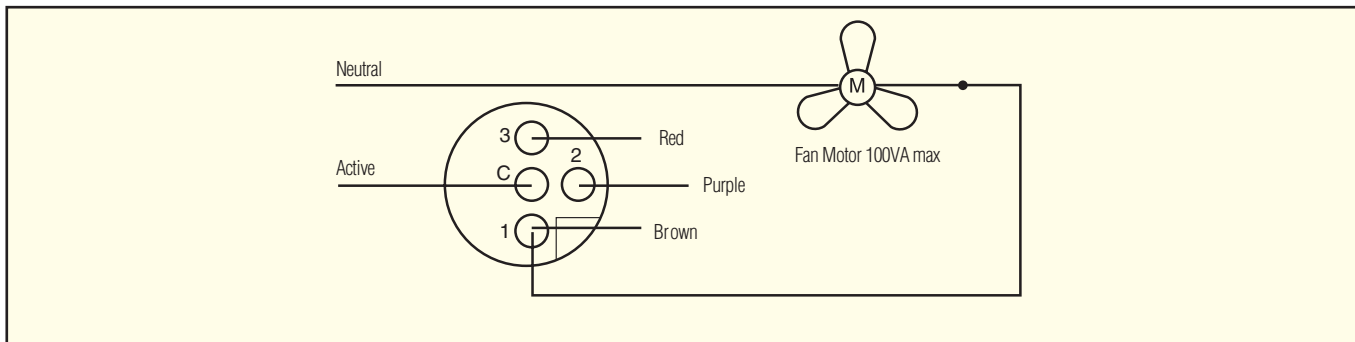
620K Dimmer Two way circuit



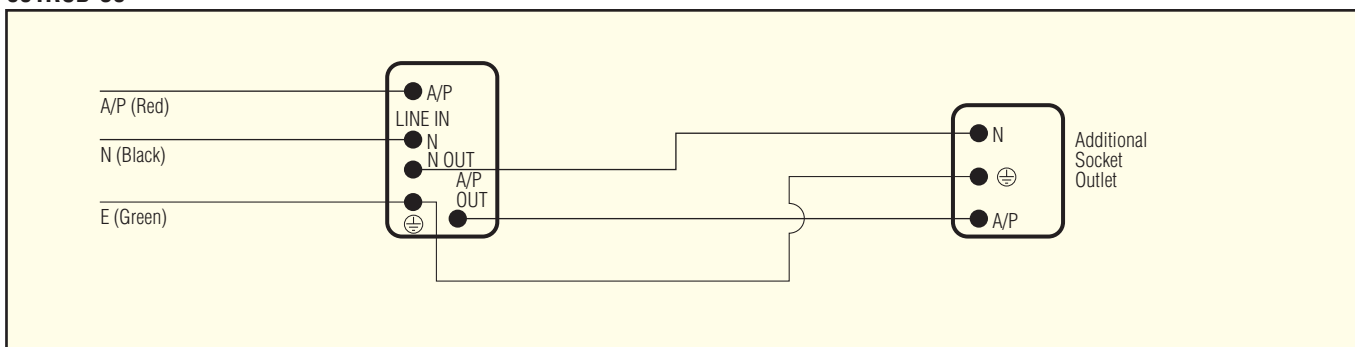
Technical data

Wiring diagrams

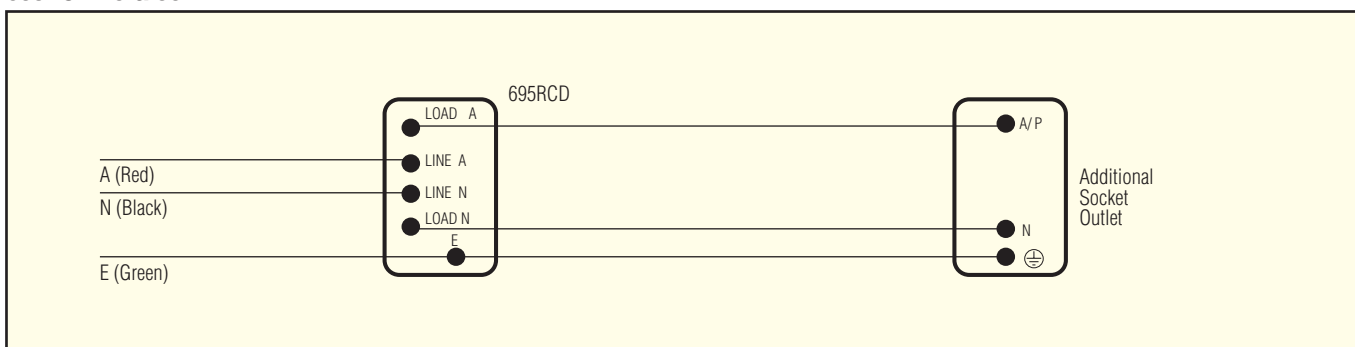
625C3 & 625C3/1 Fan Controllers



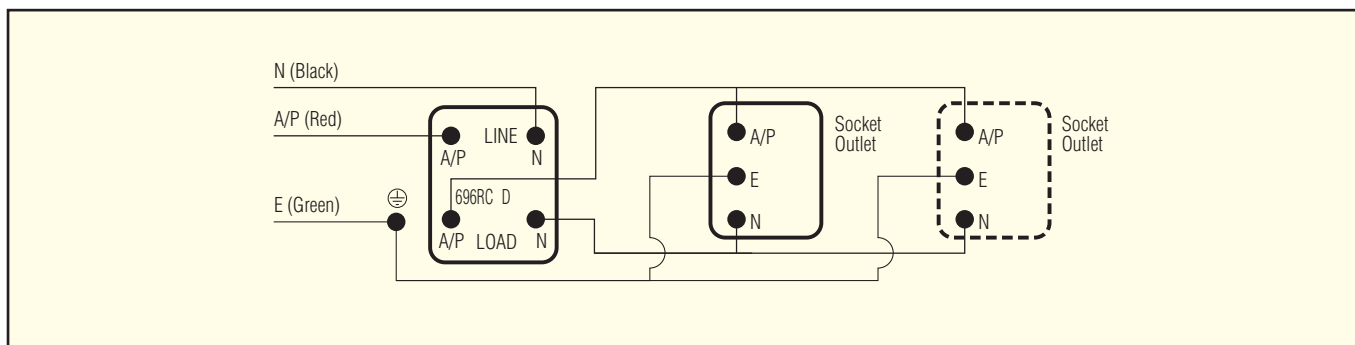
691RCD-30



695RCD-10 & 30

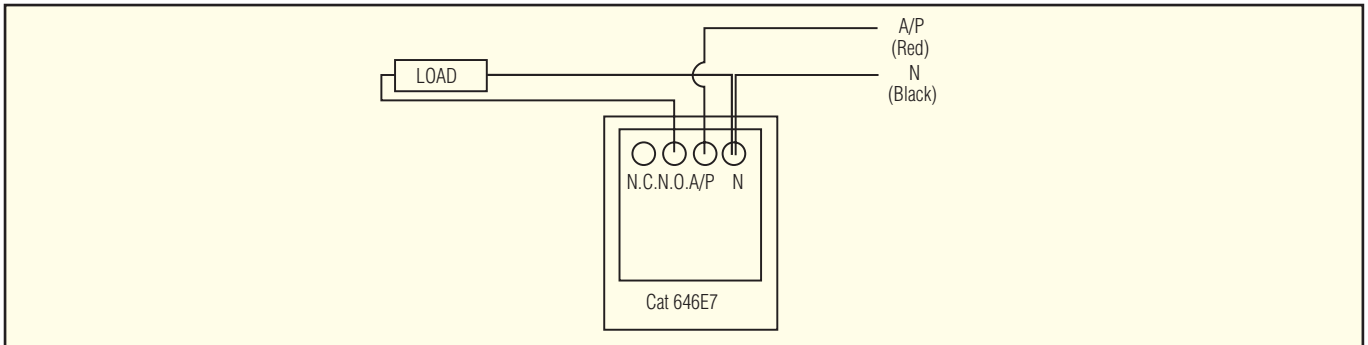


696RCD-10 & 696RCD-30

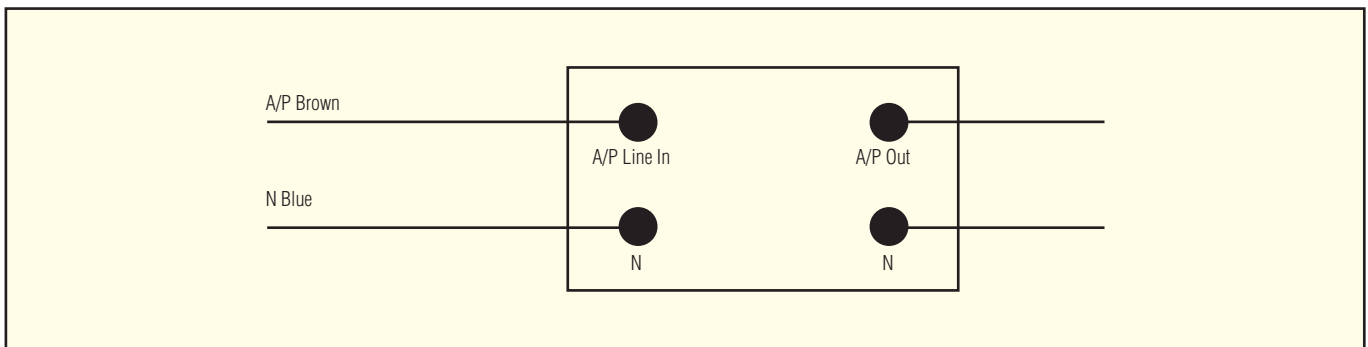


Wiring diagrams

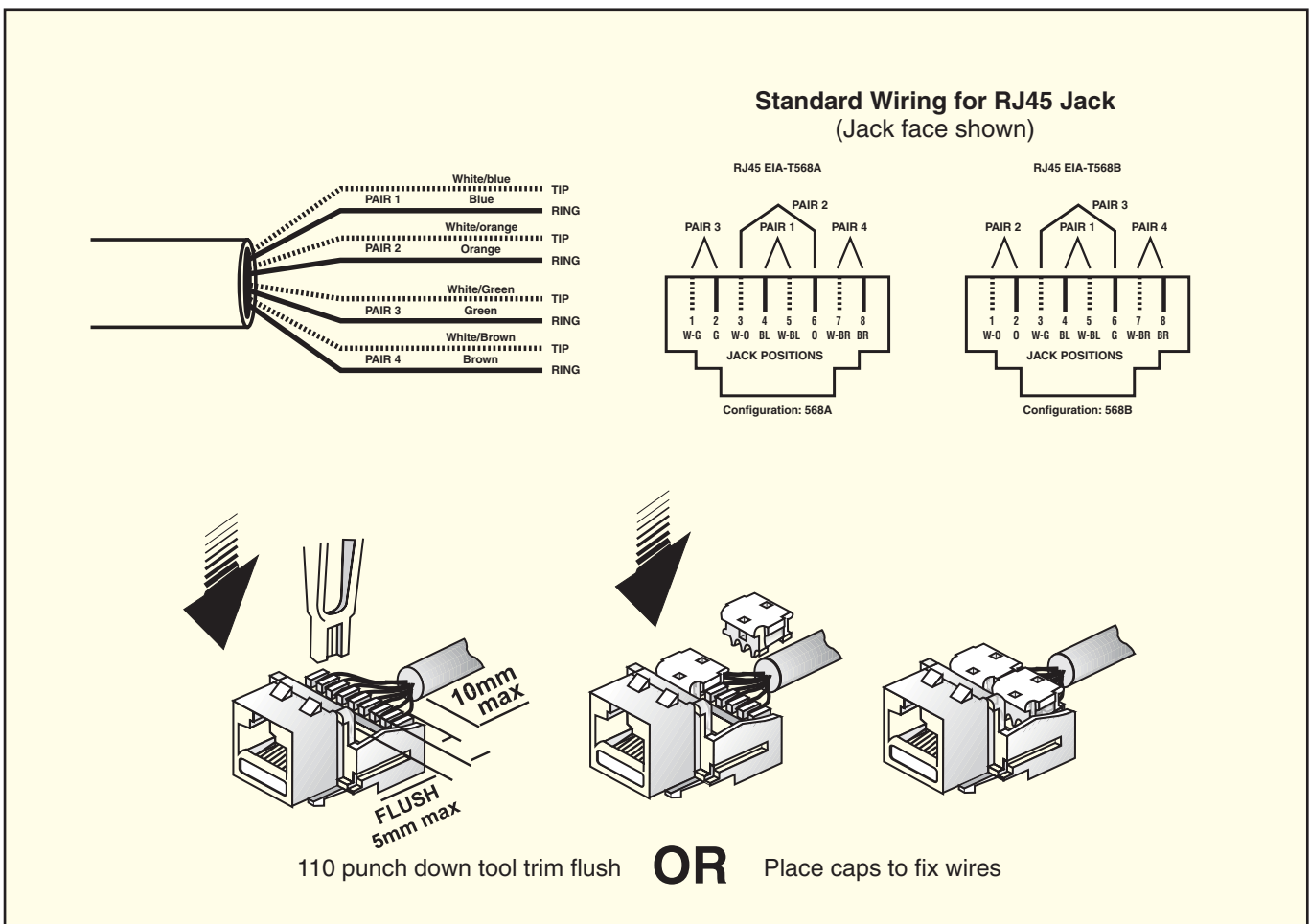
646E7 Electronic Timer



648T5/15/30/60/120 Push Button Timers



619MD & 619MDL CAT 5 RJ45 Jack Module





Index by catalogue number

Code	Page	Code	Page	Code	Page	Code	Page
144MT	48	540MGN	40	591F	45	626VCMSS	18
144PT	48	540MRD	40	592FN	45	628	31
145V	49	540MWH	40	593	46	628F	31
146H	48	540MYL	40	594F	45	629	41
146T2	48	544	53	595F	45	629F	41
148H	49	544J	53	596/56RCD	46	632	12
148V	49	545	47	596RCD	46	633M	36
149	48	546	43	598F	45	640RC	51
1575	46	547	47	599F	45	641	26
1588M	35	548BS	43	600ME	41	641/15	26
500B	38	548BS	46	600SPM	23	641C	19
500BESP	38	550VH	42	610TML24	35	641P	26
500BSP	38	551M2	37	612C	19	644	29
500BST	38	556	47	612MBBZ	19	644/15	29
500ID	38	557	50	612MPB	19	644C	19
500TT	38	558	49	612MSS	19	644N	29
501JAR-50	53	559	49	615MBB	40	646E7	12
501T	53	560	50	615MF	40	646E7C	18
502JAR-35	53	561VH	42	615MFTV	40	646E7MBBZ	18
502T	53	562VH	42	615MRB	40	646E7MPB	18
509M	40	564VH	42	615MST	40	646E7MSS	18
510ML12	35	565	51	617BT2	31	646R24	12
510ML24	35	567L	51	617BT2/2	31	646R24C	18
510MLD24	35	567S	51	617M2	38	646R24MBBZ	18
510MN	35	568	44	619MAC	39	646R24MPB	18
511VH	44	568OFF	44	619MALC	39	646R24MSS	18
514VH9/1	44	568ON	44	619MD	38	646R7	12
514VH9/2	44	570R	46	619MDL	39	648T120	12
516M	40	570S	46	619MKC	39	648T15	12
518M	38	571	43	619MKLC	39	648T30	12
519M6	38	571R	43	619MM	39	648T5	12
521M	36	572	43	620K	11	648T60	12
524VH	44	573	43	624	11	650BC	18
526KC	13	573MM	37	624M	36	650BMBBZ	18
528M	40	573R	43	625	11	650BMPB	18
528MF	39	574	43	625C	18	650BMSS	18
528MFI	39	574E	44	625C3	11	650BVH	16
528MFO	39	575	46	625C3/1	11	650VH	16
528MFS	39	576	47	625C3/1M	36	651	10
528MFV	39	578M16	33	625C3M	36	651VWP	10
528MI	40	580M16NPS	37	625MBBZ	18	661C	18
529M	40	581M16HF	34	625MPB	18	661MBBZ	18
531	50	581M16HFAL	34	625MSS	18	661MPB	18
533	49	581M16HFCL	34	625X	11	661MSS	18
534B16	52	581M16HFF	34	625XC	18	661VH	16
534B24	52	581M16HFMW	34	625XMBBZ	18	662C	18
534B8	52	581M16HFS	34	625XMPB	18	662MBBZ	18
534P16S	52	581M16PBM	37	625XMSS	18	662MPB	18
534P24S	52	581M16PBP	37	626N	13	662MSS	18
534P8S	52	581M16PBS	37	626NC	18	662VH	16
535F	51	581M16PS	37	626NMBBZ	18	663VH	16
535F	51	581VH	42	626NMPB	18	664VH	16
536	50	582VH	42	626NMSS	18	666TMB24	35
537	50	584VH	42	626VC2	13	666TML24	35
538	51	586VH	42	626VC4	13	675	22
539	49	587M10	33	626VCC	18	675HRCD-30	22
540MBK	40	588VH	42	626VCMBBZ	18	679C	18
540MBL	40	589VH	42	626VCMCPB	18	679H/2	11



Code	Page	Code	Page	Code	Page	Code	Page
679MBBZ	18	681MBBZ	18	687M3I/II	35	694XXC	19
679MPB	18	681MPB	18	687M4	35	694XXMBBZ	19
679MSS	18	681MSS	18	687M4F	35	694XXMPB	19
679V/2	11	681VH	14	688C	18	694XXMSS	19
679VN/2	11	681VID	15	688MBBZ	18	695	28
680	11	681VWP	9	688MPB	18	695-695C	20
680C	18	682	8	688MSS	18	695-695XC	20
680M20N	33	682-681C	20	688VH	16	695/15	28
680MBBZ	18	682C	18	689C	18	695C	19
680MPB	18	682HID	15	689MBBZ	18	695ID	28
680MSS	18	682HWP	9	689MPB	18	695MBBZ	19
680S	41	682MBBZ	18	689MSS	18	695MPB	19
680TMNPB	36	682MPB	18	689VH	16	695MSS	19
680TMPB	36	682MSS	18	691	24	695P	28
681	8	682VH	14	691/15	24	695R	28
681-695C	20	682VID	15	691C	19	695RCD-10	21
681C	18	682VWP	9	691MBBZ	19	695RCD-30	21
681HID	15	682VWPD	9	691MPB	19	695RCDMBBZ	19
681HWP	9	683	8	691MSS	19	695RCDMPB	19
681M20	33	683-683C	20	691R	24	695RCDMSS	19
681M20A/M	34	683-692C	20	691RCD-10	21	695SP	23
681M20AC	34	683C	18	691RCD-30	21	695X	28
681M20B	33	683HID	15	691RCD-30	21	695XC	19
681M20D	34	683HWP	9	691RCD-30	19	695XC	19
681M20DR	34	683HWP	9	691RCDMBBZ	19	695XMBBZ	19
681M20DW	34	683HWP	9	691RCDMPB	19	695XMPB	19
681M20DY	34	683HWP	9	691RCDMSS	19	695XMSS	19
681M20F	34	683HWP	9	691RCDMSS	19	696RCD-10	22
681M20F/R	34	683HWP	9	691RCDMSS	19	696RCD-30	22
681M20FG	34	683HWP	9	691RCDMSS	19	698	30
681M20G	34	683HWP	9	691RCDMSS	19	698/15	30
681M20GN	34	683HWP	9	691RCDMSS	19	698C	19
681M20H	34	683HWP	9	691RCDMSS	19	698MBBZ	19
681M20HD	34	683HWP	9	691RCDMSS	19	698MPB	19
681M20HLF	34	683HWP	9	691RCDMSS	19	698MSS	19
681M20HWS	33	683HWP	9	691RCDMSS	19	698N	30
681M20I/O	34	683HWP	9	691RCDMSS	19	698R	30
681M20L	34	683HWP	9	691RCDMSS	19	699	30
681M20LO	34	683HWP	9	691RCDMSS	19	699C	19
681M20MR	34	683HWP	9	691RCDMSS	19	699TB	30
681M20MW	34	683HWP	9	691RCDMSS	19	699TB/15	30
681M20O	34	683HWP	9	691RCDMSS	19	699TBC	19
681M20P	33	683HWP	9	691RCDMSS	19	699TBMSS	19
681M20PL	34	683HWP	9	691RCDMSS	19	699TBMSS	19
681M20PU	34	683HWP	9	691RCDMSS	19	699TBN	30
681M20R	33	683HWP	9	691RCDMSS	19	699TBR	30
681M20S	34	683HWP	9	691RCDMSS	19	89	50
681M20SE	34	683HWP	9	691RCDMSS	19	89DI	50
681M20ST	34	683HWP	9	691RCDMSS	19	89DP	50
681M20TV	34	683HWP	9	691RCDMSS	19	89M	50
681M20WH	34	683HWP	9	691RCDMSS	19	89SP	50
681M20WT	34	683HWP	9	691RCDMSS	19		
681M32	34	683HWP	9	691RCDMSS	19		
681M32AC	34	683HWP	9	691RCDMSS	19		
681M32H	34	683HWP	9	691RCDMSS	19		
681M32I/O	34	683HWP	9	691RCDMSS	19		
681M32O	34	683HWP	9	691RCDMSS	19		
681M32R	34	683HWP	9	691RCDMSS	19		

Schneider Electric products are available through electrical wholesalers New Zealand wide.

PDL Electrical Products are designed to ISO 9001

Freecall 0800-652 999, Freefax 0800-101 152

Email sales@nz.schneider-electric.com

Online product detail www.schneider-electric.co.nz

