

PDL **Strato**800Series™

Expand your horizons.

PDL **Modena**800Series™

Contemporary, innovative, flexible.

Your complete modular solution





Features and Benefits



Front loading modules:

Front loading switch modules cannot be pushed back into the wall cavity by frontal impact, saving low-profit maintenance calls while maximising end-user safety.



Wide array of switch module options:

Five rocker switch sizes, plus single and double push button switch modules allow for the creation of a vast range of product configurations.



Flexible interchangeable module combinations:

The unique nature of the range allows combinations of light switches, socket outlets, audio/TV and safety equipment in the same plate, allowing you and your customers greater options.



Captivated terminal screws and backed off screw in fully assembled product:

Stops on all terminal screws that prevent accidental disengagement reducing unwarranted frustration and downtime!



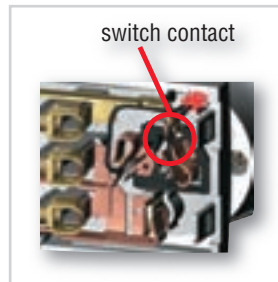
Neon Indicator Option:

Most switches are compatible with an optional neon indicator lamp (not included unless otherwise stated). This can be wired either permanently on (as a locator), or as a status indicator showing the switch position.



Combination head terminal screws:

Terminal screws standardised across the entire 800 Series product range, reducing the need for multiple drivers allowing faster fitting off times.



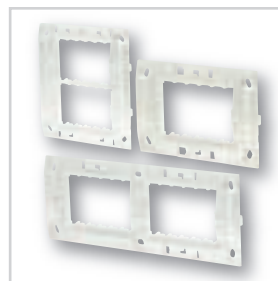
Integrally switched option:

800 Series' new contemporary design includes an internally switched socket option and safety shutters in each socket providing additional safety.



Wide range of surround colour options:

Choose either the brushed aluminium finish with the Strato range, or one of nine coloured finishes in the Modena range.



Clear grid plates in Single and Double size formats:

Strong polycarbonate grids simplify the lining up of fixing screws with flush box threads. Modena grids are available in Single, Double Vertical and Double Horizontal formats. Strato grids are available in Single and Double Vertical formats.



Compatible with 600 Series modules:

Almost the full range of 600/500 Series can be incorporated into 800 Series grid plates via the 800MA module adaptor, allowing immense flexibility in design.



Contents

MODENA FULLY ASSEMBLED PRODUCT

Switches	4
Switched single socket outlets	5
Integrally switched socket outlets	5

MODENA

Grid Plates

Standard	6
Double horizontal	6
Double vertical	6

Cover Plates

Standard	7
Double horizontal	7
Double vertical	7

STRATO FULLY ASSEMBLED PRODUCT

Switches & sockets	8-9
--------------------	-----

STRATO GRID & COVER PLATES

Standard, double vertical	9
---------------------------	---

800 SERIES MODULES

Manually switched socket modules	10
Integrally switched socket outlet modules	10
Integrally switched double socket modules	11
Switch modules	12-14
Dedicated switch modules	14
Dimmer modules	14
Audio visual modules	15
Blank modules	15
RCD modules	16
Neon Indicator	16
600 Series adaptor modules	16
Mounting accessories	17

600 SERIES MODULES

32A switch module	18
Rotary switch modules	18
Hinged flap switch modules	18

Push button switch modules	19
Tactile switch modules	19
Pull cord switch modules	19
Time delay module	20
PIR sensor module	20
Relay module	20
Permanent connection module	20
Circuit ID module	20
Buzzer modules	20
Indicator modules	21
Communications modules	22
A/V modules	23
Lexcom modules / segregation accessories	24

CARE AND CLEANING

Assembly and wiring	25
---------------------	----

SPECIFICATION DETAILS

Specification Details	26
-----------------------	----

DIMENSIONAL DRAWINGS

Module sizes	28
Modena plastic surrounds & decorative surround	28
Mounting plates	29
Modena grid plates	29
Strato grid & cover plates	30

WIRING DIAGRAMS

One way switch module	31
Two way switch module	31
Two way spring return switch module	31
Two way DP switch module with neon	32
Two way switch modules with loop	32
Intermediate switch module	32
Master switching for security	33
Double integrally switched sockets	33
Single vertical socket	33
RCD protected outlets	34
Single horizontal switched socket	34

PDL **Modena** 800 Series

Contemporary, innovative, flexible.

“It’s the details that matter
when it comes to surrounding
yourself with style.”



Black



Blue



Platinum



Charcoal



Champagne



Gunmetal



Red



White



Chrome

Strato800Series

Expand your horizons.

Strato Premium Wallplates.

An elegant blend of attractive European
style modules and sleek flat metal
picture frame surrounds.



Strato - the finishing touch
for sophisticated interiors.



Modena Fully Assembled Product

SWITCHES



881

1 GANG SINGLE POLE 2 WAY SWITCH

OVERALL DIMENSIONS:
124mm x 85mm x 9mm
(W x H x D)

Mounting Centres 84mm

Compatible Mounting Accessories 144 flush box, 146H, 146V, 148H, 148V mounting brackets

Ratings

Voltage	250V a.c. 50Hz
Resistive	16A
Inductive	16AX
Fluorescent	16AX

Colour Options  Black – 881BK
 White – 881WH

Optional Accessories (not supplied)

Decorative Surrounds	800DS – available in Copper or Chrome
Neon Indicators	800N240 – Amber colour. 1 per gang required



882

2 GANG SINGLE POLE 2 WAY SWITCH

OVERALL DIMENSIONS:
124mm x 85mm x 9mm
(W x H x D)

Mounting Centres 84mm

Compatible Mounting Accessories 144 flush box, 146H, 146V, 148H, 148V mounting brackets

Ratings

Voltage	250V a.c. 50Hz
Resistive	16A
Inductive	16AX
Fluorescent	16AX

Colour Options  Black – 882BK
 White – 882WH

Optional Accessories (not supplied)

Decorative Surrounds	800DS – available in Copper or Chrome
Neon Indicators	800N240 – Amber colour. 1 per gang required



883

3 GANG SINGLE POLE 2 WAY SWITCH

OVERALL DIMENSIONS:
124mm x 85mm x 9mm
(W x H x D)

Mounting Centres 84mm

Compatible Mounting Accessories 144 flush box, 146H, 146V, 148H, 148V mounting brackets

Ratings

Voltage	250V a.c. 50Hz
Resistive	16A
Inductive	16AX
Fluorescent	16AX

Colour Options  Black – 883BK
 White – 883WH

Optional Accessories (not supplied)

Decorative Surrounds	800DS – available in Copper or Chrome
Neon Indicators	800N240 – Amber colour. 1 per gang required

Modena Fully Assembled Product

> CONTINUED

SOCKETS



891A

SINGLE SWITCHED VERTICAL SOCKET

OVERALL DIMENSIONS:
85mm x 124mm x 9mm
(W x H x D)

Mounting Centres

84mm

Compatible Mounting Accessories

144 flush box, 146H, 146V, 148H, 148V mounting brackets

Ratings

Voltage 230V-240V a.c. 50Hz

Current 10A

Colour Options

Black – 891ABK
 White – 891AWH

Optional Accessories (not supplied)

Decorative Surrounds 800DS – available in Copper or Chrome

Neon Indicators 800N240 – Amber colour. 1 required



892A

DOUBLE VERTICAL INTEGRALLY SWITCHED SOCKET

OVERALL DIMENSIONS:
85mm x 124mm x 9mm
(W x H x D)

Mounting Centres

84mm

Compatible Mounting Accessories

144 flush box, 146H, 146V, 148H, 148V mounting brackets

Ratings

Voltage 230V-240V a.c. 50Hz

Current 10A

Colour Options

Black – 892ABK
 White – 892AWH

Optional Accessories (not supplied)

Decorative Surrounds 800DS – available in Copper or Chrome

Note

Supplied with 2 x 800N240 indicators. This socket is integrally switched – i.e. as a plug is inserted, it activates an internal switching mechanism



894

SINGLE SWITCHED HORIZONTAL SOCKET

OVERALL DIMENSIONS:
124mm x 85mm x 9mm
(W x H x D)

Mounting Centres

84mm

Compatible Mounting Accessories

144 flush box, 146H, 146V, 148H, 148V mounting brackets

Ratings

Voltage 230V-240V a.c. 50Hz

Current 10A

Colour Options

Black – 894BK
 White – 894WH

Optional Accessories (not supplied)

Decorative Surrounds 800DS – available in Copper or Chrome

Neon Indicators 800N240 – Amber colour. 1 required



895A

DOUBLE HORIZONTAL INTEGRALLY SWITCHED SOCKET

OVERALL DIMENSIONS:
124mm x 85mm x 9mm
(W x H x D)

Mounting Centres

84mm

Compatible Mounting Accessories

144 flush box, 146H, 146V, 148H, 148V mounting brackets

Ratings

Voltage 230V-240V a.c. 50Hz

Current 10A

Colour Options

Black – 883BK
 White – 883WH

Optional Accessories (not supplied)

Decorative Surrounds 800DS – available in Copper or Chrome

Note

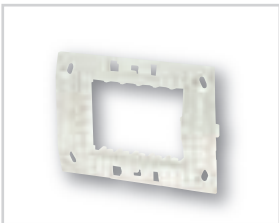
Supplied with 2 x 800N240 indicators. This socket is integrally switched – i.e. as a plug is inserted, it activates an internal switching mechanism





Modena Grid Plates

STANDARD



800G

STANDARD GRID PLATE

OVERALL DIMENSIONS:
122mm x 80mm
(W x H)

Mounting Centres	84mm
Compatible Mounting Accessories	144 flush box, 146H, 146V, 148H, 148V mounting brackets

Module Capacity (max)	
S1 (half standard)	6 modules
S2 (standard)	3 modules
S3 (medium)	2 modules
S4 (extended)	1 module *
S6 (large)	1 module

* leaves an S2 or 2 x S1 gap

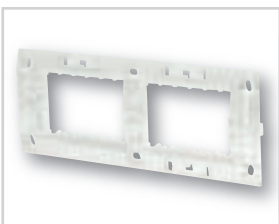
Colour	<input type="checkbox"/> Transparent
---------------	--------------------------------------

Cover Plate Option	800PS – standard plastic surround
---------------------------	-----------------------------------

Optional Accessories	
Decorative Surrounds	800DS – available for single grid plate size only

Screw Caps	800G-10 – required when used with chrome cover plates
------------	---

DOUBLE HORIZONTAL



800G2H

DOUBLE HORIZONTAL GRID PLATE

OVERALL DIMENSIONS:
213mm x 80mm (W x H)

Mounting Centres	84mm x 90mm
Compatible Mounting Accessories	800FB2H mounting bracket or flush box (with 800WBC wall anchor)

Module Capacity (max)

S1 (half standard)	12 modules (6 per aperture)
S2 (standard)	6 modules (3 per aperture)
S3 (medium)	4 modules (2 per aperture)
S4 (extended)	2 modules (1 per aperture) *
S6 (large)	2 modules (1 per aperture)

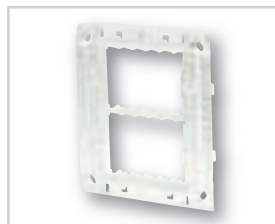
* leaves 1 x S2 or 2 x S1 gap

Colour	<input type="checkbox"/> Transparent
---------------	--------------------------------------

Cover Plate Option	800PS2H – double horizontal plastic surround
---------------------------	--

Optional Accessories	
Wall Anchor	800WBC – required when mounted using a 144 flush box
Screw Caps	800G-10 – required when used with chrome cover plates

DOUBLE VERTICAL



800G2V

DOUBLE VERTICAL GRID PLATE

OVERALL DIMENSIONS:
123mm x 128mm
(W x H)

Mounting Centres	84mm x 48mm
Compatible Mounting	800FB2V mounting bracket

Module Capacity (max)	
S1 (half standard)	12 modules (6 per aperture)
S2 (standard)	6 modules (3 per aperture)
S3 (medium)	4 modules (2 per aperture)
S4 (extended)	2 modules (1 per aperture) *
S6 (large)	2 modules (1 per aperture)

* leaves 1 x S2 or 2 x S1 gap

Colour	<input type="checkbox"/> Transparent
---------------	--------------------------------------

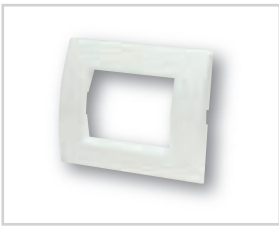
Cover Plate Option	800PS2V – double vertical plastic surround
---------------------------	--

Optional Accessories	
Screw Caps	800G-10 – required when used with chrome cover plates



Modena Cover Plates

STANDARD



800PS

STANDARD PLASTIC SURROUND

OVERALL DIMENSIONS:
124mm x 85mm x 9mm
(W x H x D)

Mounting Option

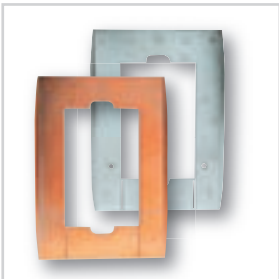
800G - Standard Grid Plate

Colour Options

-  Black (BK)
-  Blue (BL)
-  Champagne (CH)
-  Charcoal (CC)
-  Chrome (CM)
-  Gunmetal Grey (GM)
-  Platinum (PT)
-  Red (RD)
-  White (WH)

NB: 800G-10 screw covers must be used on all chrome cover plate installations.

DECORATIVE SURROUNDS



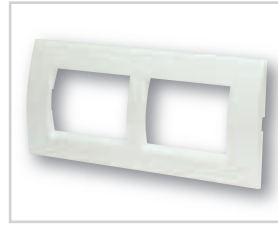
800DS

DECORATIVE SURROUND

Colour Options

-  Chrome (CM)
-  Copper (CU)

DOUBLE HORIZONTAL



800PS2H

DOUBLE HORIZONTAL PLASTIC SURROUND

OVERALL DIMENSIONS:
214mm x 85mm x 9mm
(W x H x D)

Mounting Option

800G2H – Double Horizontal Grid Plate

Colour Options

-  Black (BK)
-  Blue (BL)
-  Champagne (CH)
-  Charcoal (CC)
-  Chrome (CM)
-  Gunmetal Grey (GM)
-  Platinum (PT)
-  Red (RD)
-  White (WH)

NB: 800G-10 screw covers must be used on all chrome cover plate installations.

DOUBLE VERTICAL



800PS2V

DOUBLE VERTICAL PLASTIC SURROUND

OVERALL DIMENSIONS:
124mm x 133mm x 9mm
(W x H x D)

Mounting Option

800G2V – Double Vertical Grid Plate

Colour Options

-  Black (BK)
-  Blue (BL)
-  Champagne (CH)
-  Charcoal (CC)
-  Chrome (CM)
-  Gunmetal Grey (GM)
-  Platinum (PT)
-  Red (RD)
-  White (WH)

NB: 800G-10 screw covers must be used on all chrome cover plate installations.



Strato Fully Assembled Product

SWITCHES



S881

1 GANG SINGLE POLE 2 WAY SWITCH

OVERALL DIMENSIONS:
124mm x 85mm x 7.5mm
(W x H x D)

Mounting Centres

84mm

Compatible Mounting Accessories

144 flush box, 146H, 146V,
148H, 148V mounting brackets

⚡ Ratings

Voltage	250V a.c. 50Hz
Resistive	16A
Inductive	16AX
Fluorescent	16AX

Colour Option

 Brushed Aluminium/Black
S881BABK

Optional Accessories (not supplied)

Neon Indicators 800N240 – Amber colour.
1 per gang required



S882

2 GANG SINGLE POLE 2 WAY SWITCH

OVERALL DIMENSIONS:
124mm x 85mm x 7.5mm
(W x H x D)

Mounting Centres

84mm

Compatible Mounting Accessories

144 flush box, 146H, 146V,
148H, 148V mounting brackets

⚡ Ratings

Voltage	250V a.c. 50Hz
Resistive	16A
Inductive	16AX
Fluorescent	16AX

Colour Option

 Brushed Aluminium/Black
S882BABK

Optional Accessories (not supplied)

Neon Indicators 800N240 – Amber colour.
1 per gang required



S883

3 GANG SINGLE POLE 2 WAY SWITCH

OVERALL DIMENSIONS:
124mm x 85mm x 7.5mm
(W x H x D)

Mounting Centres

84mm

Compatible Mounting Accessories

144 flush box, 146H, 146V,
148H, 148V mounting brackets

⚡ Ratings

Voltage	250V a.c. 50Hz
Resistive	16A
Inductive	16AX
Fluorescent	16AX

Colour Option

 Brushed Aluminium/Black
S883BABK

Optional Accessories (not supplied)

Neon Indicators 800N240 - Amber colour.
1 per gang required



Strato Grid and Cover Plates

SOCKETS



S894

SINGLE SWITCHED HORIZONTAL SOCKET

OVERALL DIMENSIONS:
124mm x 85mm x 7.5mm
(W x H x D)

Mounting Centres 84mm

Compatible Mounting Accessories 144 flush box, 146H, 146V, 148H, 148V mounting brackets

Ratings

Voltage	230V-240V a.c. 50Hz
Current	10A

Colour Option Brushed Aluminium/Black S894BABK

Optional Accessories (not supplied)

Neon Indicators 800N240 – Amber colour. 1 required



S895A

DOUBLE HORIZONTAL INTEGRALLY SWITCHED SOCKET

OVERALL DIMENSIONS:
124mm x 85mm x 7.5mm
(W x H x D)

Mounting Centres 84mm

Compatible Mounting Accessories 144 flush box, 146H, 146V, 148H, 148V mounting brackets

Ratings

Voltage	230V-240V a.c. 50Hz
Current	10A

Colour Option Brushed Aluminium/Black S895BABK

Note: Supplied with 2 x 800NZ40 indicators. This socket is integrally switched - ie. as a plug is inserted, it activates an internal switching mechanism.

STANDARD



S800GPS

STANDARD STRATO GRID & SURROUND

OVERALL DIMENSIONS:
123mm x 80mm x 6mm
(W x H x D)

Mounting Centres 84mm

Compatible Mounting Accessories 144 flush box, 146H, 146V, 148H, 148V mounting brackets

Module Capacity	Standard
S1 (half standard)	6 modules
S2 (standard)	3 modules
S3 (medium)	2 modules
S4 (extended)	1 module *
S6 (large)	1 module

* leaves an S2 or 2 x S1 gap

Colour Option Brushed Aluminium/Black S800GPSBABK

DOUBLE VERTICAL



S800GPS2V

DOUBLE VERTICAL GRID PLATE/SURROUND

OVERALL DIMENSIONS:
123mm x 128mm x 6mm
(W x H x D)

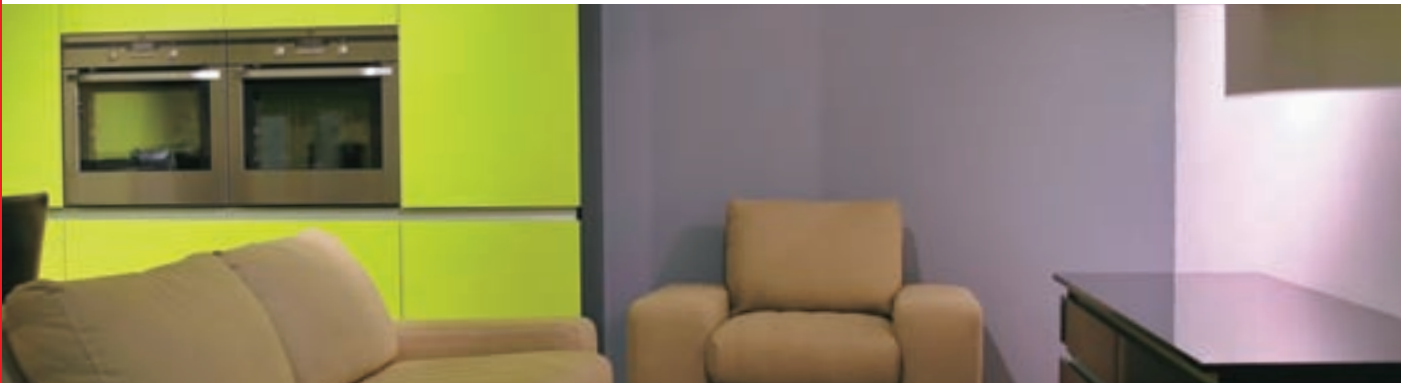
Mounting Centres 84mm x 48mm

Compatible Mounting Accessories 800FB2V mounting bracket

Module Capacity	Double
S1 (half standard)	12 modules
S2 (standard)	6 modules
S3 (medium)	4 modules
S4 (extended)	2 modules *
S6 (large)	2 modules

* leaves 1 x S2 or 2 x S1 gap

Colour Option Brushed Aluminium/Black S800GPS2VBABK



800 Series Modules

MANUALLY SWITCHED SOCKET MODULES

INTEGRALLY SWITCHED SOCKET MODULES



894M

SINGLE MANUALLY SWITCHED HORIZONTAL SOCKET MODULE

Module size S6

Ratings

Voltage	230V-240V a.c. 50Hz
Current	10A

Colour Options

- Black (894MBK)
- White (894MWH)

Indicator Options (not supplied) 800N240 Amber Neon x 1



894M/15

SINGLE MANUALLY SWITCHED HORIZONTAL SOCKET MODULE - 15A

Module size S6

Ratings

Voltage	230V-240V a.c. 50Hz
Current	15A

Colour Options

- Black (894M/15BK)
- White (894M/15WH)

Indicator Options (not supplied) 800N240 Amber Neon x 1



891MA

SINGLE INTEGRALLY SWITCHED VERTICAL SOCKET MODULE

Module size S4

Ratings

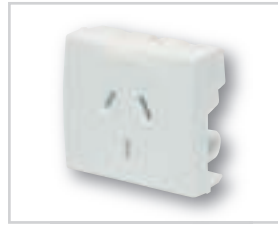
Voltage	230V-240V a.c. 50Hz
Current	10A

Colour Options

- Black (891MABK)
- White (891MAWH)

Indicator Options

Not compatible



894MA

SINGLE INTEGRALLY SWITCHED HORIZONTAL SOCKET MODULE

Module size S4

Ratings

Voltage	230V-240V a.c. 50Hz
Current	10A

Colour Options

- Black (894MABK)
- White (894MAWH)

Indicator Options

Not compatible

800 Series Modules

> CONTINUED

INTEGRALLY SWITCHED DOUBLE SOCKET MODULES



892MA

DOUBLE INTEGRALLY SWITCHED VERTICAL SOCKET MODULE

Module size S6

Ratings

Voltage	230V-240V a.c. 50Hz
Current	10A

Colour Options

- Black (892MABK)
- White (892MAWH)

Indicator Options (not supplied) 800N240 Amber Neon x 2



892MA/15

DOUBLE INTEGRALLY SWITCHED VERTICAL SOCKET MODULE - 15A

Module size S6

Ratings

Voltage	230V-240V a.c. 50Hz
Current	15A

Colour Options

- Black (892MA/15BK)
- White (892MA/15WH)

Indicator Options (not supplied) 800N240 Amber Neon x 2



895MA

DOUBLE INTEGRALLY SWITCHED HORIZONTAL SOCKET MODULE

Module size S6

Ratings

Voltage	230V-240V a.c. 50Hz
Current	10A

Colour Options

- Black (895MABK)
- White (895MAWH)

Indicator Options (not supplied) 800N240 Amber Neon x 2



895MA/15

DOUBLE INTEGRALLY SWITCHED HORIZONTAL SOCKET MODULE

Module size S6

Ratings

Voltage	230V-240V a.c. 50Hz
Current	15A

Colour Options

- Black (895MA/15BK)
- White (895MA/15WH)

Indicator Options (not supplied) 800N240 Amber Neon x 2

800 Series Modules > CONTINUED

SWITCH MODULES



860M16

HALF STANDARD POLE ONE WAY SWITCH MODULE

Module size S1

Poles/Ways 1 Pole/1 Way

Ratings

Voltage	250V a.c. 50Hz
Resistive	16A
Inductive	16AX
Fluorescent	16AX

Colour Options  Black (860M16BK)  White (860M16WH)

Indicator Options (not supplied) 800N240 Amber Neon x 1



860M16PB

HALF STANDARD PRESS SWITCH MODULE - BLANK

Module size S1

Poles/Ways 1 Pole/1 Way Momentary action

Ratings

Voltage	250V a.c. 50Hz
Resistive	16A
Inductive	16AX
Fluorescent	16AX

Colour Options  Black (860M16PBBK)  White (860M16PBWH)

Indicator Options (not supplied) 800N240 Amber Neon x 1

Note 'PRESS' & 'BELL' icon versions available (see Dedicated Switch Mechanisms section)



861M16

HALF STANDARD POLE TWO WAY SWITCH MODULE

Module size S1

Poles/Ways 1 Pole/2 Way

Ratings

Voltage	250V a.c. 50Hz
Resistive	16A
Inductive	16AX
Fluorescent	16AX

Colour Options

 Black (861M16BK)  White (861M16WH)

Indicator Options

No indicator options



881M16S

STANDARD SINGLE POLE TWO WAY SWITCH MODULE

Module size S2

Poles/Ways 1 Pole/2 Way

Ratings

Voltage	250V a.c. 50Hz
Resistive	16A
Inductive	16AX
Fluorescent	16AX

Colour Options

 Black (881M16SBK)  White (881M16SWH)

Indicator Options (not supplied) 800N240 Amber Neon x 1



881M16SPB

STANDARD PRESS SWITCH MODULE - BLANK


Module size S2

Poles/Ways 1 Pole/2 Way Momentary action

Ratings

Voltage	250V a.c. 50Hz
Resistive	10A
Inductive	10AX
Fluorescent	10AX

Colour Options

 Black (881M16SPBBK)  White (881M16SPBWH)

Indicator Options (not supplied) 800N240 Amber Neon x 1

Note

'PRESS' & 'BELL' icon versions available (see Dedicated Switch Mechanisms section)



882M10N

STANDARD DOUBLE POLE TWO WAY SWITCH MODULE WITH NEON

Module size S2

Poles/Ways 2 Pole/2 Way

Ratings

Voltage	250V a.c. 50Hz
Resistive	10A
Inductive/Capacitive	10AX
Fluorescent	10AX

Colour Options

 Black (882M10NBK)  White (882M10WH)

Indicator Options (Included) 800N240 Amber Neon x 1

800 Series Modules > CONTINUED

SWITCH MODULES



860M16

HALF STANDARD POLE ONE WAY SWITCH MODULE

Module size S1

Poles/Ways 1 Pole/1 Way

Ratings

Voltage	250V a.c. 50Hz
Resistive	16A
Inductive	16AX
Fluorescent	16AX

Colour Options  Black (860M16BK)  White (860M16WH)

Indicator Options (not supplied) 800N240 Amber Neon x 1



860M16PB

HALF STANDARD PRESS SWITCH MODULE - BLANK

Module size S1

Poles/Ways 1 Pole/1 Way Momentary action

Ratings

Voltage	250V a.c. 50Hz
Resistive	16A
Inductive	16AX
Fluorescent	16AX

Colour Options  Black (860M16PBBK)  White (860M16PBWH)

Indicator Options (not supplied) 800N240 Amber Neon x 1

Note 'PRESS' & 'BELL' icon versions available (see Dedicated Switch Mechanisms section)



861M16

HALF STANDARD POLE TWO WAY SWITCH MODULE

Module size S1

Poles/Ways 1 Pole/2 Way

Ratings

Voltage	250V a.c. 50Hz
Resistive	16A
Inductive	16AX
Fluorescent	16AX

Colour Options

 Black (861M16BK)  White (861M16WH)

Indicator Options

No indicator options



881M16S

STANDARD SINGLE POLE TWO WAY SWITCH MODULE

Module size S2

Poles/Ways 1 Pole/2 Way

Ratings

Voltage	250V a.c. 50Hz
Resistive	16A
Inductive	16AX
Fluorescent	16AX

Colour Options

 Black (881M16SBK)  White (881M16SWH)

Indicator Options (not supplied) 800N240 Amber Neon x 1



881M16SPB

STANDARD PRESS SWITCH MODULE - BLANK



Module size S2

Poles/Ways 1 Pole/2 Way Momentary action

Ratings

Voltage	250V a.c. 50Hz
Resistive	10A
Inductive	10AX
Fluorescent	10AX

Colour Options

 Black (881M16SPBBK)  White (881M16SPBWH)

Indicator Options (not supplied) 800N240 Amber Neon x 1

Note

'PRESS' & 'BELL' icon versions available (see Dedicated Switch Mechanisms section)



882M10N

STANDARD DOUBLE POLE TWO WAY SWITCH MODULE WITH NEON

Module size S2

Poles/Ways 2 Pole/2 Way

Ratings

Voltage	250V a.c. 50Hz
Resistive	10A
Inductive/Capacitive	10AX
Fluorescent	10AX

Colour Options

 Black (882M10NBK)  White (882M10WH)

Indicator Options (not supplied) 800N240 Amber Neon x 1



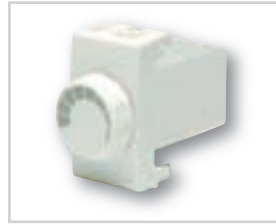
800 Series Modules

> CONTINUED

DEDICATED SWITCH MECHANISMS

ICON	DESCRIPTION	MODULE SIZE	PART NUMBER
	AIRCON	Standard (S2)	881M16SAC
		Half Standard (S1)	861M16AC
	BELL (MOMENTARY)	Standard (S2)	881M16SB
		Half Standard (S1)	860M16B
	DISHWASHER	Standard (S2)	881M16SDW
		Half Standard (S1)	861M16DW
	FAN	Standard (S2)	881M16SF
		Half Standard (S1)	861M16F
	FRIDGE	Standard (S2)	881M16SFR
		Half Standard (S1)	861M16FR
	HEAT	Standard (S2)	881M16SH
		Half Standard (S1)	861M16H
	HOB (32A SWITCHES ONLY)	Standard (S2)	881M32SNH
		Half Standard (S1)	-
	HOOD	Standard (S2)	881M16SHD
		Half Standard (S1)	861M16HD
	HWS	Standard (S2)	881M16SHWS
		Half Standard (S1)	861M16HWS
	LIGHT	Standard (S2)	881M16SL
		Half Standard (S1)	861M16L
	MICROWAVE	Standard (S2)	881M16SMW
		Half Standard (S1)	861M16MW
	MIRROR	Standard (S2)	881M16SMR
		Half Standard (S1)	861M16MR
	ON/OFF	Standard (S2)	881M16SIO
		Half Standard (S1)	861M16IO
	OUTSIDE	Standard (S2)	881M16SO
		Half Standard (S1)	861M16O
	PRESS (MOMENTARY)	Standard (S2)	881M16SP
		Half Standard (S1)	860M16P
	PRESS (MOMENTARY, UNPRINTED)	Standard (S2)	881M16SPB
		Half Standard (S1)	860M16PB
	PUMP	Standard (S2)	881M16SPU
		Half Standard (S1)	861M16PU
	RANGE/OVEN (32A SWITCHES ONLY)	Standard (S2)	881M32SNR
		Half Standard (S1)	-
	SENSOR	Standard (S2)	881M16SSE
		Half Standard (S1)	861M16SE
	SPA	Standard (S2)	881M16SS
		Half Standard (S1)	861M16S
	WASH	Standard (S2)	881M16SWH
		Half Standard (S1)	861M16WH
	WASTE	Standard (S2)	881M16SWT
		Half Standard (S1)	861M16WT

DIMMERS



824M

STANDARD SIZE TRAILING EDGE DIMMER MODULE

Module size S2

Dimming Method

Electronic trailing edge

Ratings

Voltage	230V-240V a.c. 50Hz
Maximum Load	400W
Minimum Load	25W

Load Suitability

Incandescent	400W max
240V Halogen Lighting	400W max
Resistive Loads	400W max
Low Voltage Lighting - Electronic Transformers	400W max
Low Voltage Lighting - Wire Wound Transformers	Not suitable
Fluorescents	Not suitable
Motor Speed Control	Not suitable

Colour Options

- Black (824MBK)
- White (824MWH)



833M

STANDARD SIZE LEADING EDGE DIMMER MODULE

Module size S2

Dimming Method

Leading edge, Phase Control

Ratings

Voltage	230V-240V a.c. 50Hz
Maximum Load	300W
Minimum Load	60W

Load Suitability

Incandescent	300W max
240V Halogen Lighting	300W max
Resistive Loads	300W max
Low Voltage Lighting - Electronic Transformers	Not suitable
Low Voltage Lighting - Wire Wound Transformers	240W max
Fluorescents	Not suitable
Motor Speed Control	Not suitable

Colour Options

- Black (833MBK)
- White (833MWH)



800 Series Modules > CONTINUED

AUDIO-VISUAL MODULES

BLANK MODULES



840MRWY

STANDARD SIZE TRIPLE RCA MODULE

Module size S2
Red, White and Yellow sockets

Module Colour Options

- Black (840MRWYBK)
- White (840MRWYWH)

Notes Solder tag connections



840MRGB

STANDARD SIZE TRIPLE RCA MODULE

Module size S2
Red, Green and Blue sockets

Module Colour Options

- Black (840MRGBBK)
- White (840MRGBWH)

Notes Solder tag connections



815MB

STANDARD SIZE BANANA BINDING POST MODULE

Module size S2
Red and Black binding posts/
banana sockets

Module Colour Options

- Black (815MBBK)
- White (815MBWH)

Notes Accepts connection via either banana plugs, fork terminals or bare wires



860BM

HALF STANDARD BLANK MODULE

Module size S1

Module Colour Options

- Black (860BMBK)
- White (860BMWH)



880BM

STANDARD BLANK MODULE

Module size S2

Module Colour Options

- Black (880BMBK)
- White (880BMWH)



800 Series Modules > CONTINUED

RCD MODULES



896RCDM-30

RCD MODULE

Module size S6

Ratings

Voltage	230V-240V a.c. 50Hz
Current	20A Resistive
Trip Current	30mA
Action on Voltage Loss	Latching
Tripping Reaction Time	Less than 0.03 seconds

Colour Options

- Black (896RCDM30BK)
- White (896RCDM30WH)

600 SERIES ADAPTOR MODULES



800MA

STANDARD 600/500 SERIES MODULE ADAPTOR

Module size S2

Allows 600 / 500 Series modules to be incorporated into 800 Series plates

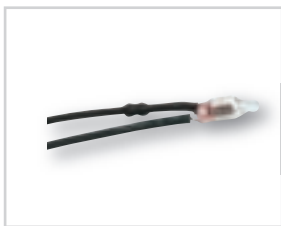
Module Colour Options

- Black (880MABK)
- White (880MAWH)

Notes

Not suitable for 624M, 624TM, 625C3M, 625C3/1M, 633M, 634LM, 509M modules

INDICATOR - NEON



800N240

NEON INDICATOR LAMP - AMBER

Module size n/a

Ratings

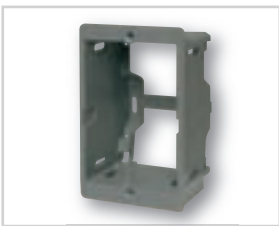
Voltage	230V-240V a.c. 50Hz
Current	0.25mA
Life	60,000 hours





800 Series Mounting Accessories

MOUNTING ACCESSORIES



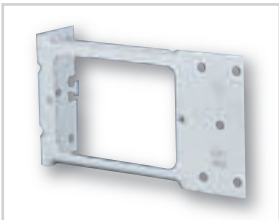
144PT

FLUSH BOX

84mm x 52mm opening
84mm mounting centres,
48mm deep

Plastic threaded plate fixing holes. Large cable entries for ease of wiring. Side mounting by nails. Provision for horizontal or vertical mounting to studs. Provision for angled screw fixing through side wall.

144MT As for 144PT but with threaded brass plate fixing holes.

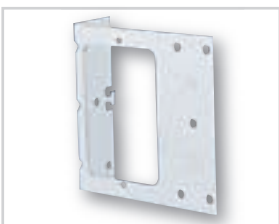


148H

HORIZONTAL BRACKET

52mm x 76mm opening
84mm mounting centres

Suits all standard plate size 800 Series accessories.



148V

VERTICAL BRACKET

52mm x 76mm opening
84mm mounting centres

Suits all standard plate size 800 Series accessories.



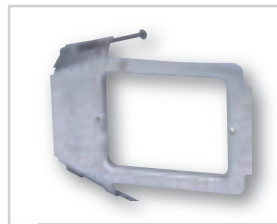
145V

VERTICAL BRACKET

52mm x 76mm opening
84mm mounting centres

Suits all standard plate size 800 Series accessories.

Nails can be inserted at the side.

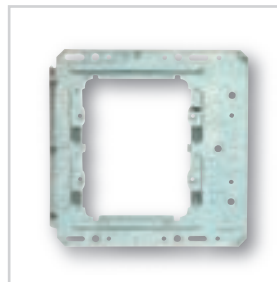


146H

HORIZONTAL BRACKET

84mm mounting centres

Nailed stud bracket for standard plate size 800 Series accessories.



800FB2V

METAL VERTICAL MOUNTING BRACKET

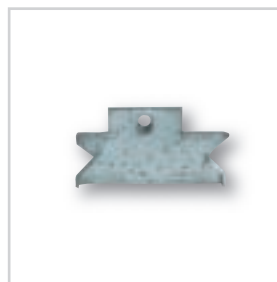
Suits 800G2V and S800GPS2V



800FB2H

METAL HORIZONTAL MOUNTING BRACKET

Suits 800G2H only



800WBC

WALL BOARD CLAMP

For retrofit applications where double grids are used

Suits 800G2H only



600 Series Modules*

* require the use of an 800MA module adaptor (S2)

32A SWITCH MODULE



680M32

32A SWITCH MODULE

680M32AC Marked 'AIR CON'
680M32H Marked 'HOB'
680M32I/O Marked 'ON/OFF'
680M32O Marked 'OVEN'
680M32R Marked 'RANGE'

Ratings

Voltage	230V-240V a.c. 50Hz
Resistive	32A
Inductive	25AX
	M180, 1 Way, Single Pole

Terminals accommodate 2 x 6mm² conductors

ROTARY SWITCH MODULES

Terminals accommodate 4 x 1.5mm² cables each or 2 x 2.5mm² cables each



687M3

3-POSITION ROTARY MODULE

0, 1, 2

687M3A/M

3-POSITION ROTARY MODULE

Auto, Man, Off

687M3I/II

3-POSITION ROTARY MODULE

I, 0, II

687M4

4-POSITION ROTARY MODULE

0, 1, 2, 3

687M4F

4-POSITION ROTARY MODULE

0, 1, 2, 3

Dial marked 'Fan'

Ratings

Voltage	230V-240V a.c. 50Hz, 16A
---------	--------------------------

HINGED FLAP SWITCH MODULES



581M16HF

SWITCH MODULE WITH HINGED LID

Unprinted

581M16HFAL

'ALARM' SWITCH MODULE

As 581M16HF but with hinged, protective lid marked 'ALARM'.

581M16FCL

CLEAR LID SWITCH MODULE

As 581M16HF but with clear, hinged, protective lid.

581M16HFF

'FRIDGE' SWITCH MODULE

As 581M16HF but with hinged, protective lid marked 'FRIDGE'.

581M16FMW

'MICROWAVE' SWITCH MODULE

As 581M16HF but with hinged, protective lid marked 'MICROWAVE'.



581M16HFS

'SENSOR' SWITCH MODULE

As 581M16HF but with hinged, protective lid marked 'SENSOR'.

Ratings

Voltage	230V-240V a.c. 50Hz
Resistive	16A
Fluorescent	10AX
Inductive	16AX
	2 Way

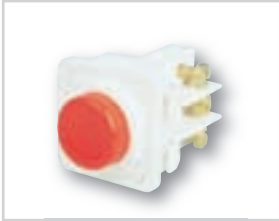


600 Series Modules* > CONTINUED

* require the use of an 800MA module adaptor (S2)

PUSH BUTTON SWITCH MODULES

Terminals accommodate 4 x 1.5mm² cables each or 2 x 2.5mm² cables each.



581M16PBP

PROTRUDING PUSH BUTTON MODULE

Button Colour Options

■ Red White



581M16PBS

SHROUDED PUSH BUTTON MODULE

Button Colour Options

■ Red White
■ Green Black



581M16PBM

MUSHROOM PUSH BUTTON MODULE

Button Colour Options

■ Red White
■ Green

Ratings (to AS1431 Pt1)

Voltage	500V a.c.
Operational Voltage	230V-240V a.c. 50Hz
Thermal Current	16A
Operational Current	4A, 240V a.c. 2A, 415V a.c.
Utilisation Category	AC 11
IP Rating	IP40

TACTILE SWITCH MODULES



680TMPB

TACTILE SWITCH MODULES

Momentary contact switch, normally open

Ratings

Voltage	24V d.c., 10mA 12V d.c., 50mA
---------	-------------------------------



680TMNPB

ILLUMINATED TACTILE SWITCH MODULE

Momentary contact switch, normally open.

Separate terminals allow independent wiring of LED.

Available with RED or GREEN LED.

Module available white only.

Ratings

Voltage	24V d.c., 10mA 12V d.c., 50mA
---------	-------------------------------

PULL CORD SWITCH MODULES

Terminals accommodate 4 x 1.5mm² cables each or 2 x 2.5mm² cables each



581M16PS

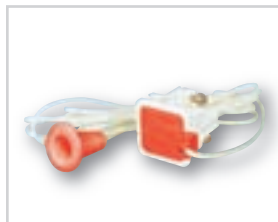
PULL CORD SWITCH MODULE

Ratings

Voltage	230V-240V a.c. 50Hz
Resistive	16A
Fluorescent	10AX
Inductive	16A
	1 Way/2 Way

Colour Option

White only



573MM

MOMENTARY CONTACT PULL CORD SWITCH MODULE

Ratings

Voltage	12V a.c., 12A
---------	---------------

Colour Option

White module with red button and actuator

600 Series Modules* > CONTINUED

* require the use of an 800MA module adaptor (S2)

TIME DELAY MODULE



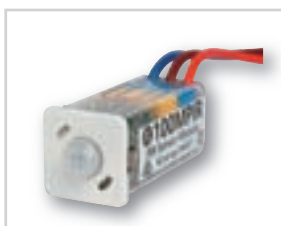
648TM

PROGRAMMABLE TIME DELAY MODULE

Selectable delay from 15 sec to 2 hours

3A resistive

PIR SENSOR MODULE



100MPIR

PIR SENSOR MODULE

Adjustable light level and time delay

3A resistive, 100W fluorescent

RELAY MODULE



600RM

RELAY MODULE

N/O and N/C contacts
16A resistive, 6AX fluorescent

Ratings

Voltage	250V a.c. 50Hz
Resistive	16A
Fluorescent	6AX

PERMANENT CONNECTION MODULE



551M2

PERMANENT CONNECTION MODULE

Terminals accommodate

4 x 1.5mm² cables each or
2 x 2.5mm² cables each

Ratings

Voltage	230V-240V a.c. 50Hz, 16A
---------	--------------------------

'Bell Mouth' cable entry accommodates flexible cords up to 10mm diameter.

CIRCUIT ID MODULE



500ID

BLANK MODULE FOR CIRCUIT ID

Module comes with blank label for printing appliance details or circuit identification. A clear, clip-on cover protects the label.

BUZZER MODULES



1588M

BUZZER MODULE

Ratings

Voltage	240V a.c.
Terminal connection	Flying leads
Sound level	70dB

Module colour

White



666TMB24

PIEZO BUZZER

Rated for continuous use

Ratings

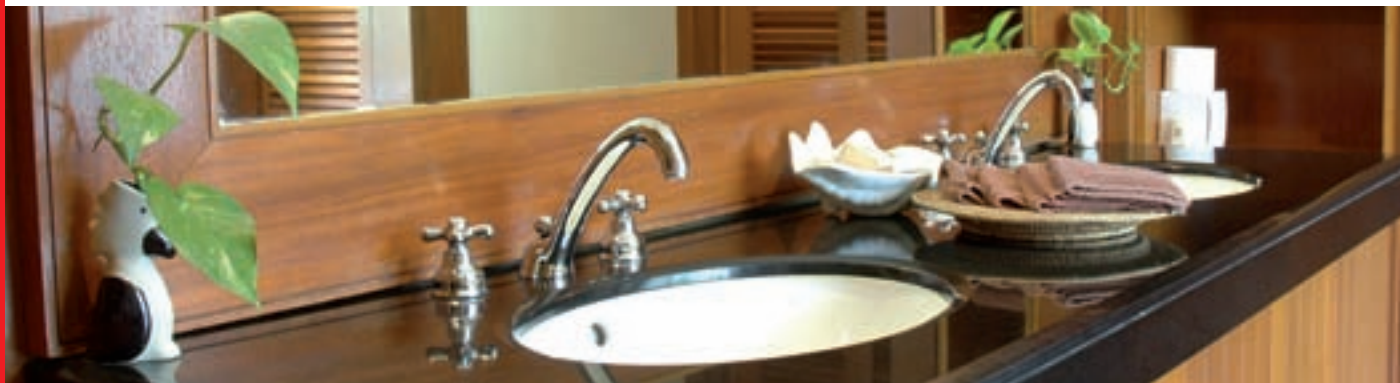
Voltage	24V d.c.
Current draw	20mA
Sound level	90dB
Nominal frequency	3100Hz

Terminals accommodate

0.5mm² single strand cables or
1mm² multi-strand cables

Module colour

White



600 Series Modules* > CONTINUED

* require the use of an 800MA module adaptor (S2)

INDICATOR MODULES



510MN

**ILLUMINATED
MODULE**

Two terminals for direct connection to neon

Ratings

Voltage 230V-240V a.c. 50Hz

Lens colour options

Clear Red
 Green Amber
 Blue

Dedicated Option

Printed 'RCD ON' and available in white only with AMBER lens.

510ML12

**ILLUMINATED
MODULE**

Ratings

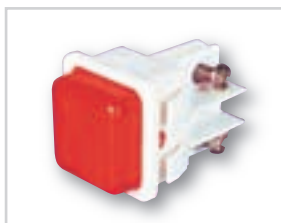
Voltage 12V a.c./d.c.

Lens colour options

Clear Red
 Green Amber
 Blue

Module Colour

White



510ML24

**ILLUMINATED
MODULE**

Ratings

Voltage 12V a.c./d.c.

Lens colour options

Clear Red
 Green Amber
 Blue

Module Colour

White



610ML24

**ILLUMINATED
MODULE**

Ratings

Voltage 24V d.c.

Current draw 20mA

Terminals accommodate

0.5mm² single strand cables or 1mm² multi-strand cables

Module Colour

White



666TML24

**ILLUMINATED
MODULE**

Red LED illumination visible from any angle

Ratings

Voltage 24V d.c.

Current 20mA

Terminals accommodate

0.5mm² single strand cables or 1mm² multi-strand cables

Module Colour

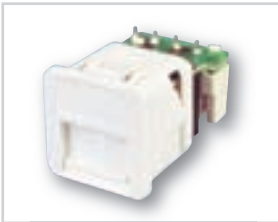
White



600 Series Modules* > CONT

* require the use of an 800MA module adaptor (S2)

COMMUNICATIONS MODULES



617M2

BT OUTLET JACK

Two-wire outlet for two-wire installations.

IDC connections.

Two-wire outlets are not compatible with three-wire systems.

Approved to Telepermit PTC 226.



518M

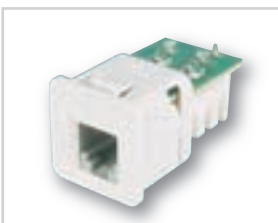
BT OUTLET JACK

IDC connections.

For secondary connections.

Module Colour

White



519M6

FCC 6-WAY OUTLET JACK

IDC connections

For secondary connections



500TT

IDC TERMINATING TOOL

For use with Cat 617M2, 518M and 519M6.



619MD

DATAPLUS CAT 6 RJ45 MODULE

IDC connections.

Data and voice connection.

Compliant to category 6, EIA-568.

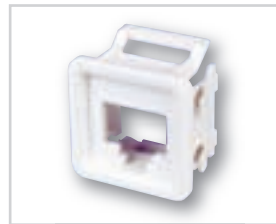
Allows for both 568A and 568B wiring options.

Module Colour Options

White

Black

619MDL As for 619MD but with hinged, gravity lid to facilitate circuit identification and protect data socket from dust when not in use.

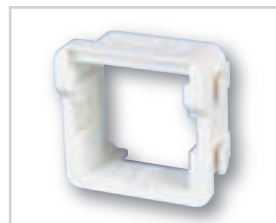


619MKC

DATA JACK ADAPTOR MODULE

Accepts Cat 5 RJ45 data jacks in the Keystone form from Krone, Amp, Hubbell, Suttle, HPM or Dataplus

619MKLC As for 619MKC but with hinged, gravity lid to facilitate circuit identification and protect data socket from dust when not in use.

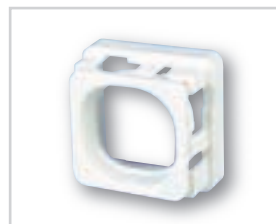


619MAC

DATA JACK ADAPTOR MODULE

Accepts Cat 5 RJ45 data jacks from AT&T and Suttle

619MALC As for 619MAC but with hinged, gravity lid to facilitate circuit identification and protect data socket from dust when not in use.



619MM

DATA JACK ADAPTOR MODULE

Accepts Cat 5 RJ45 data jacks from Modtap





600 Series Modules* > CONTINUED

* require the use of an 800MA module adaptor (S2)

A/V MODULES



528MF

COAXIAL CABLE SOCKET with REAR 'F' CONNECTION

528MF Marked 'TV'
528MFI Marked 'IN'
528MFO Marked 'OUT'
528MFS Marked 'SKY'
528MFV Marked 'VIDEO'

Rating 75 Ohm

PAL type socket with 'F' connect in rear.



528M

COAXIAL CABLE CONNECTION SOCKET

PAL type socket marked 'TV'
 Clamp terminals

529M Marked 'FM'

Rating 75 Ohm

528MI

PAL ISOLATED TERMINAL

PAL type socket marked 'TV'

Rating 75 Ohm

Voltage (mains isolated) 240V a.c.

Cable connection coaxial socket module.

For safety in hazardous environments.



615MF

'F' TYPE CONNECTOR MODULE

'F' Female/Female through connector

615MFTV Marked 'TV'



540M

RCA AUDIO CONNECTION SOCKET

Solder type terminals

Socket Colour Options

Black (BK) White (WH)
 Yellow (YL) Red (RD)
 Green (GN) Blue (BU)



615MBB

BANANA SOCKET/ BINDING POST

Rating

Voltage 12V - 250V a.c. 10A

Suits standard banana plug.

Accepts wire and forked terminal connections.

Black band.

615MRB As for 615MBB but with a red band.



516M

BNC SOCKET

Impedance 50 Ohm

Solder terminals.



615MST

'ST' TYPE FIBRE OPTIC CONNECTOR MODULE

'ST' multi-mode through connector

Comes with two yellow dust covers in place



LexCom Modules/600 Series Modules*

* require the use of an 800MA module adaptor (S2)

LEXCOM HOME NETWORK

When you make the investment of building a new home, the final result should be a house that is not only attractive and comfortable, but one that also keeps pace with your family's expanding technology needs.

The LexCom Home Network is a unique VDI solution that allows you to distribute TV, telephone and data signals throughout the home. By using the same type of connector for all signal types you can easily change an outlet's function without having to rewire your house.

For further details, please ask for a copy of the LexCom Home Network catalogue.



SEGREGATION ACCESSORIES



680S

MODULE SHROUD

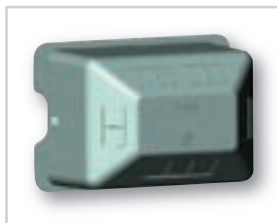
Flame retardant material.

Insulates up to 3000V.

Suits all 500 Series and 600 Designer Series modules.

Colour Option

■ Grey



146S

SHROUD

Fits cat 144, 146H, 146V, 148H, 148V, 800FD2H & 800FB2V

LEXCOM CONNECTORS



LCHRJ45

LEXCOM MODULAR CONNECTION JACK

For use with LexCom Home system



611M

LEXCOM TO 600 SERIES ADAPTOR CLIP

Used for mounting LCHRJ45 connectors into 600 Series plates or 800MA adaptors

Colour Options

■ Black (BL)

□ White (WH)





Care and Cleaning

PDL Strato and Modena products are designed for durability and resistance to marking. Over time, however, normal usage can result in the build-up of dust and grime from fingermarks etc.

Like most wall plate ranges in New Zealand, the polycarbonate material that provides Modena and Strato with their strength and toughness can be susceptible to physical degradation over time

if subjected to certain chemical compounds, including those that may be found in some common household cleaners.

PDL Modena and Strato products should only be cleaned with a water dampened cloth in order to maintain their optimum appearance and longevity.

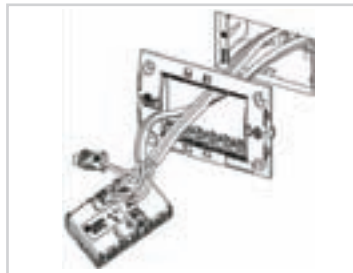
Assembly and Wiring

GENERAL INSTRUCTIONS

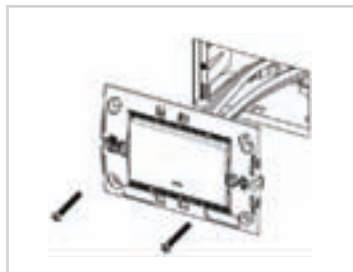
- It is illegal for persons other than those authorised by legislation to work on the fixed wiring of any electrical installation.
- All installations must be in accordance with local and state Electrical Wiring Regulation and Building Codes of Practice.
- CLEANING – To clean, simply use a cloth dampened with water only. Cleaning agents are not recommended as their use may harm the product and void warranty claims.

FITTING INSTRUCTIONS

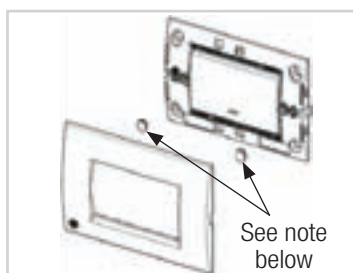
1. Modular accessories can be wired before or after clipping into a grid.



2. Modules should be clipped into grids before screwing product to the wall.



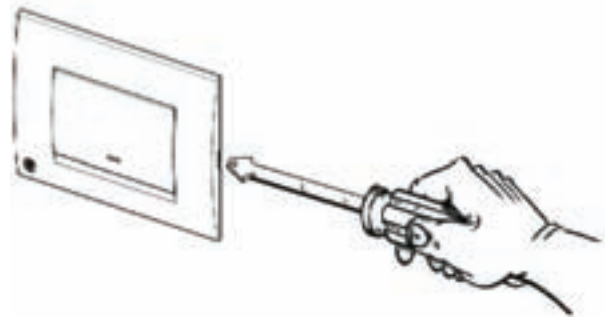
3. Once the grid is firmly attached to the wall the cover can be clipped into place.



Note: When fitting a metal plated cover to a grid that has been mounted using the centre mounting screws, screw caps must be fitted.

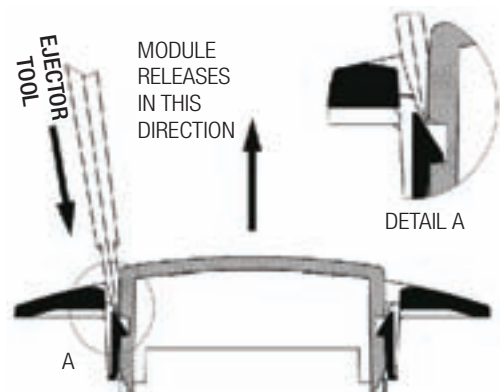
COVER REMOVAL

To remove cover insert a flat blade screwdriver between cover and grid tab and gently lever apart.



MODULE REMOVAL

To remove modules use ejector tool as shown below.





Specification Details

800 SERIES SOCKET MODULES		894M	894M/15	894MA	891MA
Module Size		S6	S6	S4	S4
	Width (mm)	74.80	74.80	49.80	49.80
	Length (mm)	44.80	44.80	44.80	44.80
Switching	Auto Switching (Integral)	✗	✗	✓	✓
	Manual Switching	✓	✓	via separate switch module	via separate switch module
Safety Shutters		✓	✓	✓	✓
Ratings	Voltage	230V-240V a.c. 50Hz	230V-240V a.c. 50Hz	230V-240V a.c. 50Hz	230V-240V a.c. 50Hz
	Current	10A	15A	10A	10A
Terminal Capacity (max number of cables per terminal)	1.5mm cables	9	9	9	9
	2.5mm cables	4	4	4	4
	4.0mm cables	3	3	3	3
Accessories	Neon Indicator (800N240)	x 1 - Optional	x 1 - Optional	Incompatible	Incompatible
Standards Compliance	AS/NZS 3133:2003	✓	✓	✓	✓
	AS/NZS 3100	✓	✓	✓	✓
	AS/NZS 3112	✓	✓	✓	✓

800 SERIES SOCKET MODULES		892MA	892MA/15	895MA	895MA/15
Module Size		S6	S6	S6	S6
	Width (mm)	74.80	74.80	74.80	74.80
	Length (mm)	44.80	44.80	44.80	44.80
Switching	Auto Switching (Integral)	✓	✓	✓	✓
	Manual Switching	✗	✗	✗	✗
Safety Shutters		✓	✓	✓	✓
Ratings	Voltage	230V-240V a.c. 50Hz	230V-240V a.c. 50Hz	230V-240V a.c. 50Hz	230V-240V a.c. 50Hz
	Current	10A	15A	10A	15A
Terminal Capacity (max number of cables per terminal)	1.5mm cables	9	9	9	9
	2.5mm cables	4	4	4	4
	4.0mm cables	3	3	3	3
Accessories	Neon Indicator (800N240)	x 2 - Optional	x 2 - Optional	x 2 - Optional	x 2 - Optional
Standards Compliance	AS/NZS 3133:2003	✓	✓	✓	✓
	AS/NZS 3100	✓	✓	✓	✓
	AS/NZS 3112	✓	✓	✓	✓

Specification Details > CONTINUED

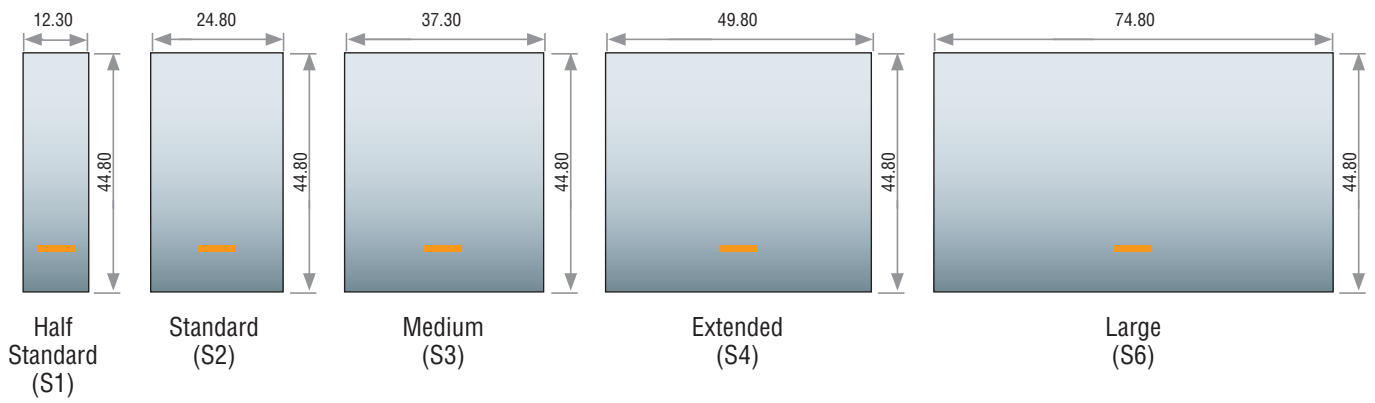
800 SERIES SWITCH MODULES		860M16	861M16	881M16S	882M10N	881M32SN
Module Size		S1	S1	S2	S2	S2
	Width (mm)	12.30	12.30	24.80	24.80	24.80
	Length (mm)	44.80	44.80	44.80	44.80	44.80
Switching	Ways	1	2	2	2	2
	Poles	1	1	1	2	1
Ratings	Voltage	250V a.c. 50Hz	250V a.c. 50Hz	250V a.c. 50Hz	250V a.c. 50Hz	250V a.c. 50Hz
	Resistive	16A	16A	16A	10A	32A
	Inductive	16AX	16AX	16AX	10AX	-
	Fluorescent	16AX	16AX	16AX	10AX	-
Terminal Capacity (max number of cables per terminal)	1mm cables	9	9	9	9	9
	1.5mm cables	6	6	6	6	6
	2.5mm cables	3	3	3	3	3
	4.0mm cables	2	2	2	2	2
Accessories	Neon Indicator (800N240)	x 1 - Optional	Incompatible	x 1 - Optional	x 1 - Included	x 1 - Included
Standards Compliance	AS/NZS 3133:2003	✓	✓	✓	✓	✓
	AS/NZS 3100	✓	✓	✓	✓	✓
	AS/NZS 3121	✓	✓	✓	✓	✓

800 SERIES SWITCH MODULES		881M16M	881M16V	881M16L	880TPB1	880TPB2
Module Size		S3	S4	S6	S2	S2
	Width (mm)	37.30	49.80	74.80	24.80	24.80
	Length (mm)	44.80	44.80	44.80	44.80	44.80
Switching	Ways	2	2	2	2	2 (x2)
	Poles	1	1	1	1	1 (x2)
Ratings	Voltage	250V a.c. 50Hz	250V a.c. 50Hz	250V a.c. 50Hz	250V a.c. 50Hz	250V a.c. 50Hz
	Resistive	16A	16A	16A	16A	16A
	Inductive	16AX	16AX	16AX	16AX	16AX
	Fluorescent	16AX	16AX	16AX	16AX	16AX
Terminal Capacity (max number of cables per terminal)	1mm cables	9	9	9	6	6
	1.5mm cables	6	6	6	4	4
	2.5mm cables	3	3	3	2	2
	4.0mm cables	2	2	2	0	0
Accessories	Neon Indicator (800N240)	x 1 - Optional	x 1 - Optional	x 1 - Optional	n/a - built in LED	n/a - built in LED
Standards Compliance	AS/NZS 3133:2003	✓	✓	✓	✓	✓
	AS/NZS 3100	✓	✓	✓	✓	✓
	AS/NZS 3121	✓	✓	✓	✓	✓

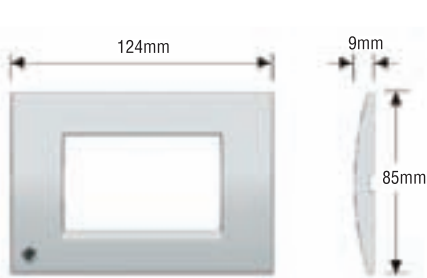


Dimensional Drawings

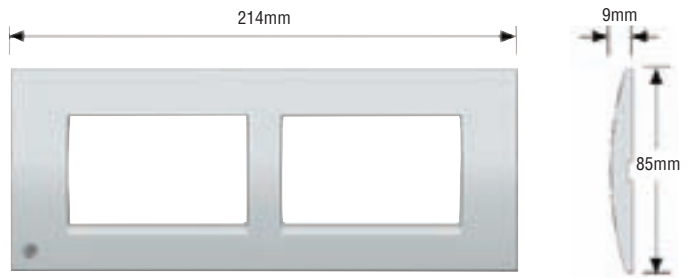
MODULE SIZES



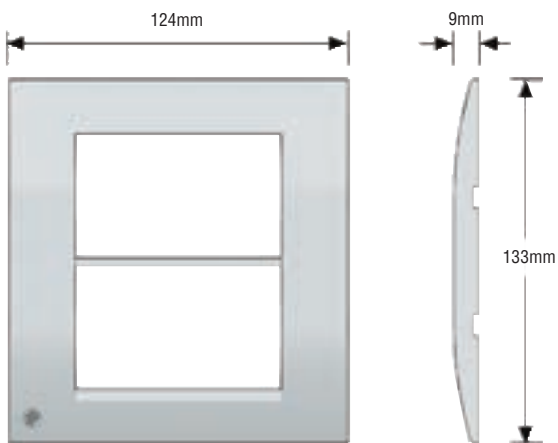
MODENA PLASTIC SURROUNDS



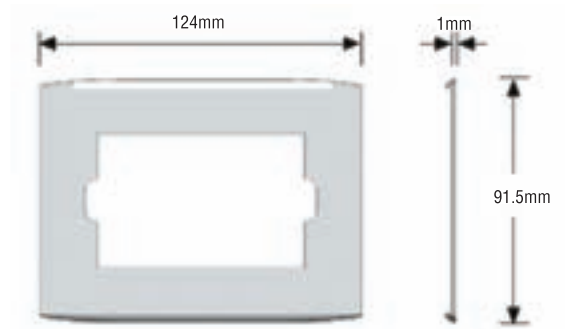
800PS



800PS2H

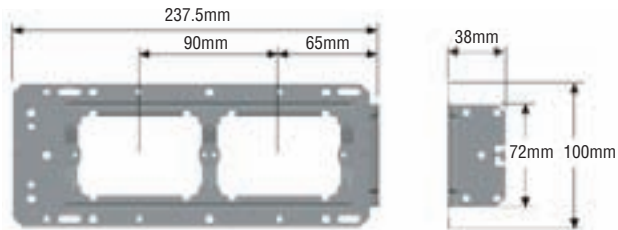


800PS2V

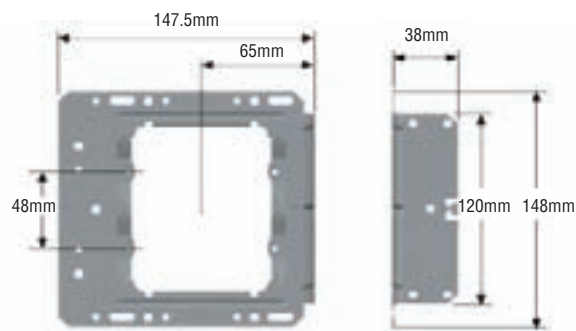


800DS

MOUNTING PLATES

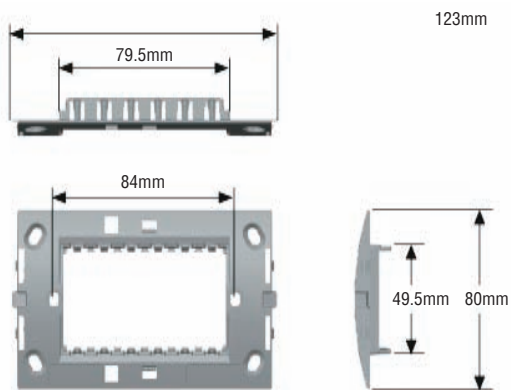


800FB2H Double Horizontal

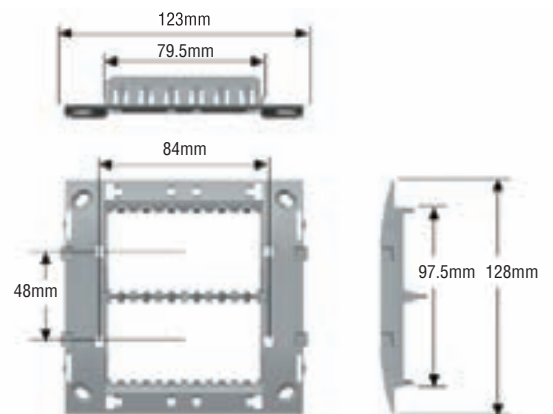


800FB2V Double Vertical

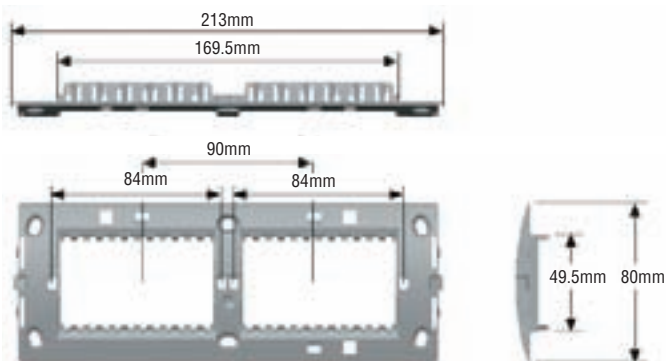
GRID PLATES



800G

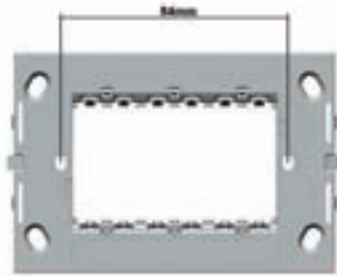
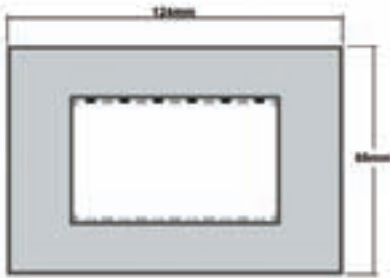


800G2V Double Vertical

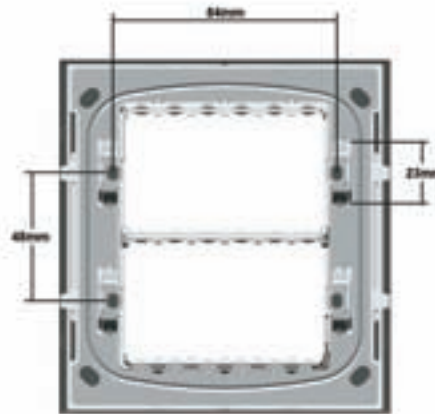
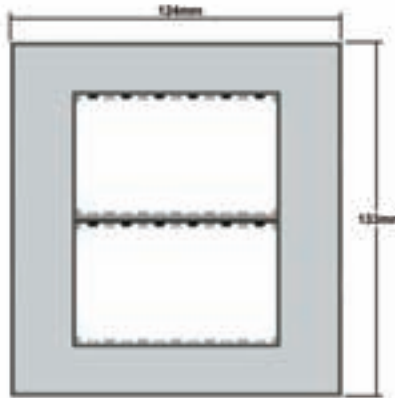
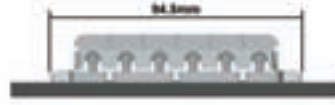


800G2H Double Horizontal

STRATO GRID & COVER PLATES



S800GPS



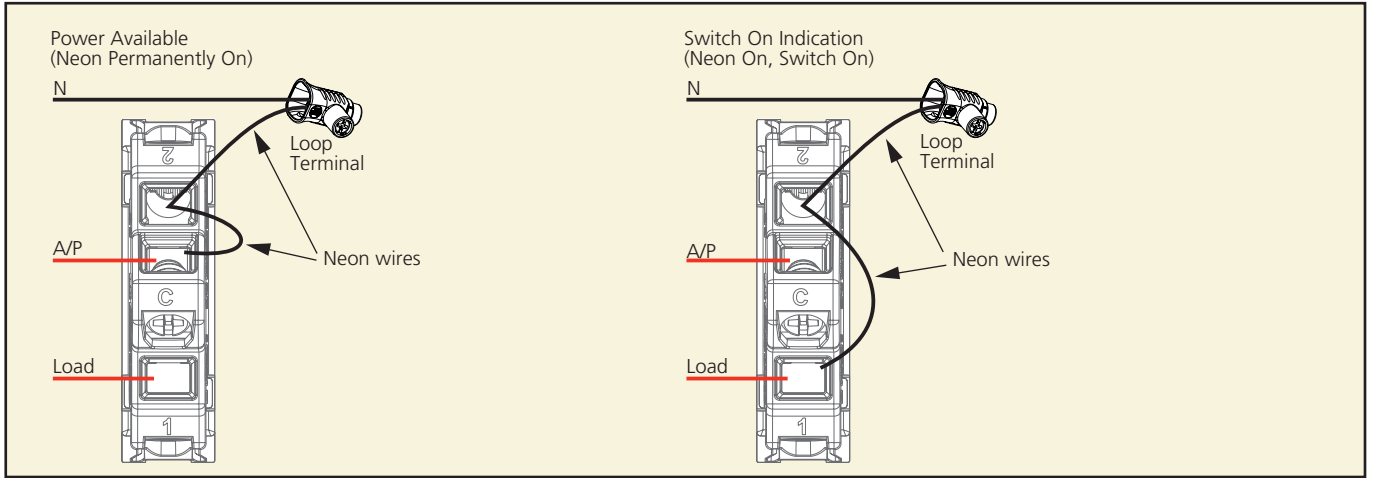
S800GPS2V



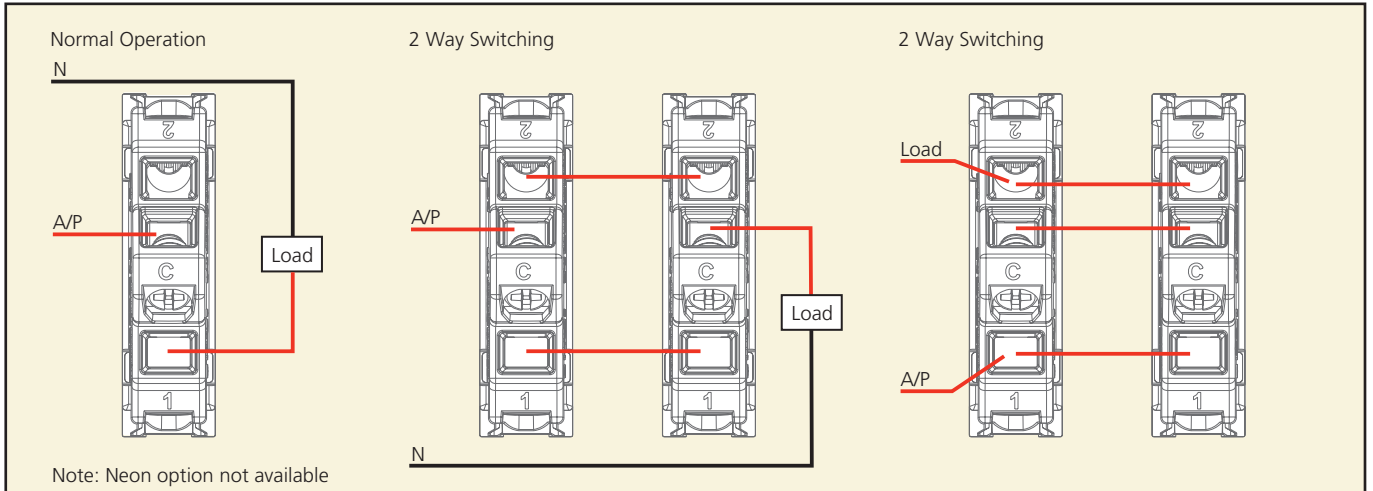
S800GPS2V

Wiring Diagrams

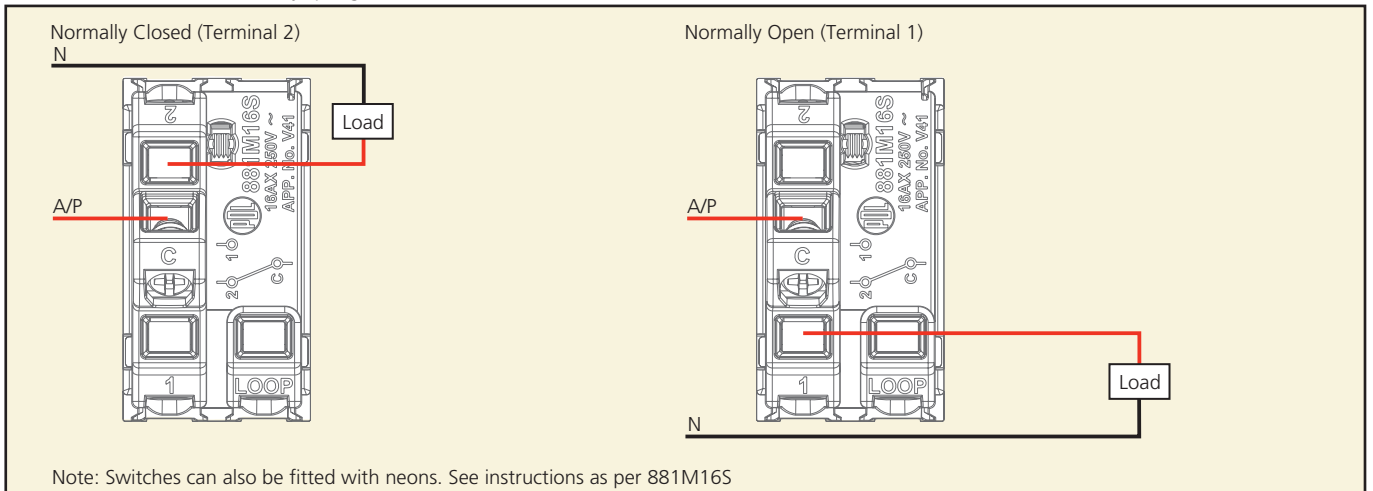
860M16 one way switch module



861M16 two way switch module

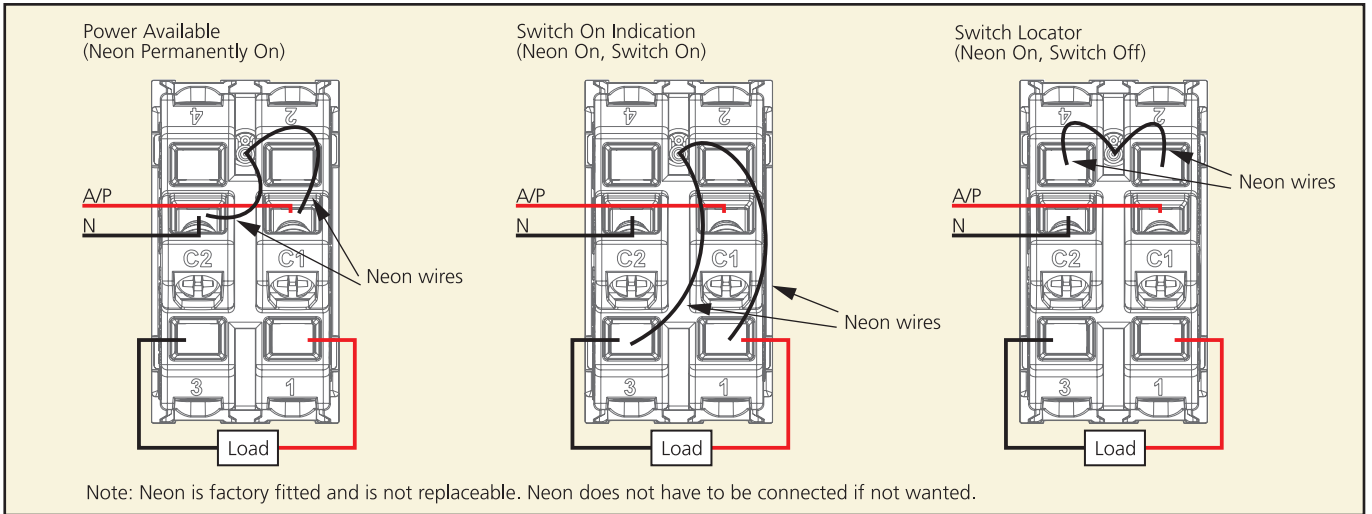


881M16SP (PRESS) two way spring return switch module

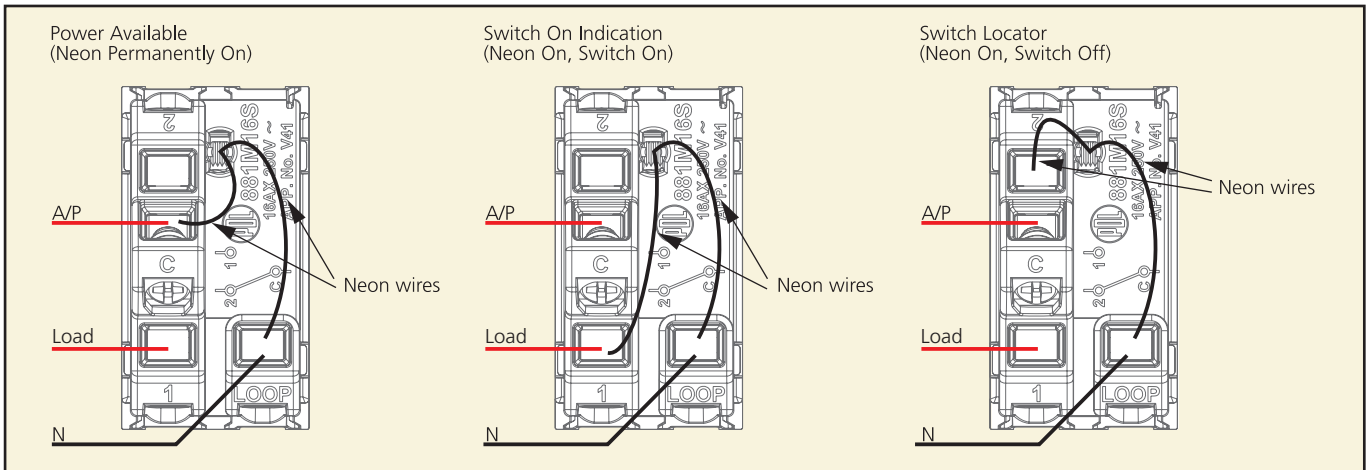


Wiring Diagrams > CONTINUED

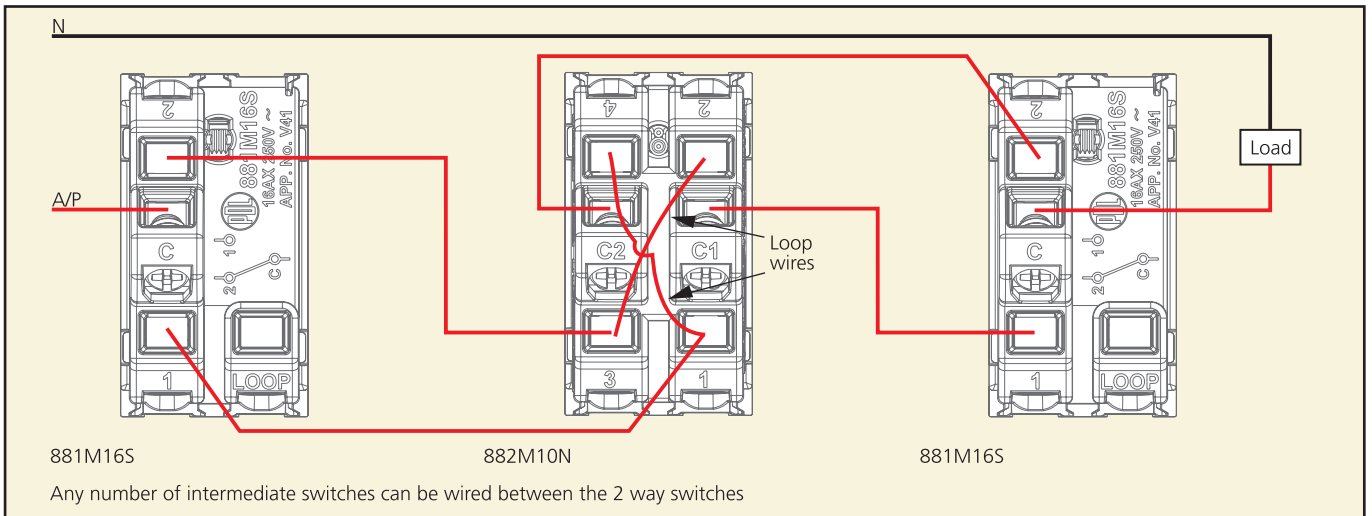
882M10N two way DP switch module with neon



881M16S/881M16M/881M16V/881M16L two way switch modules with loop

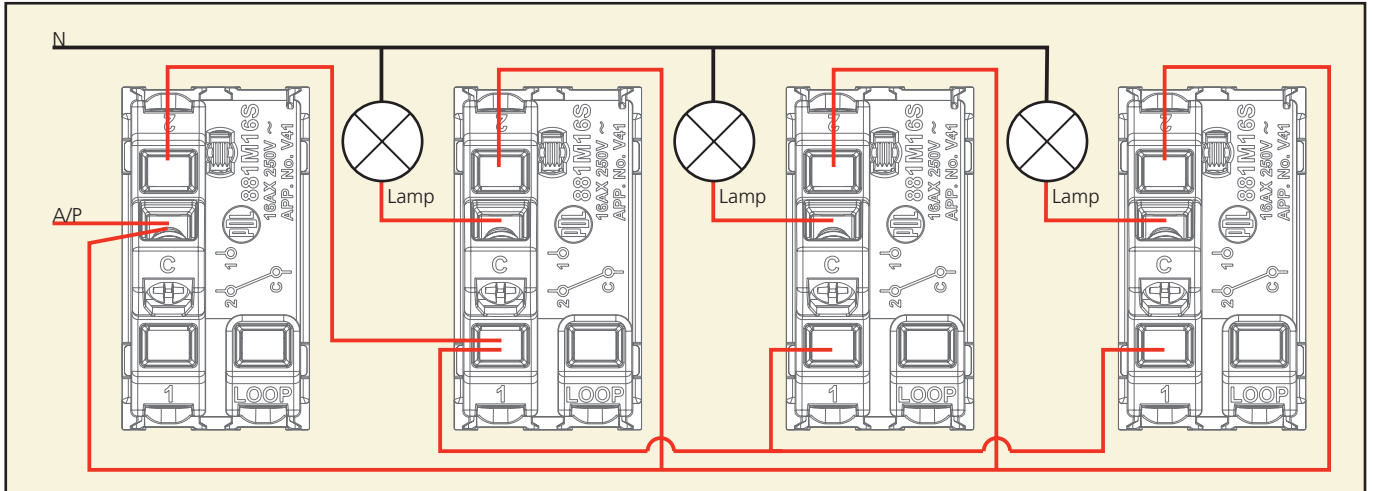


882M10N intermediate switch module

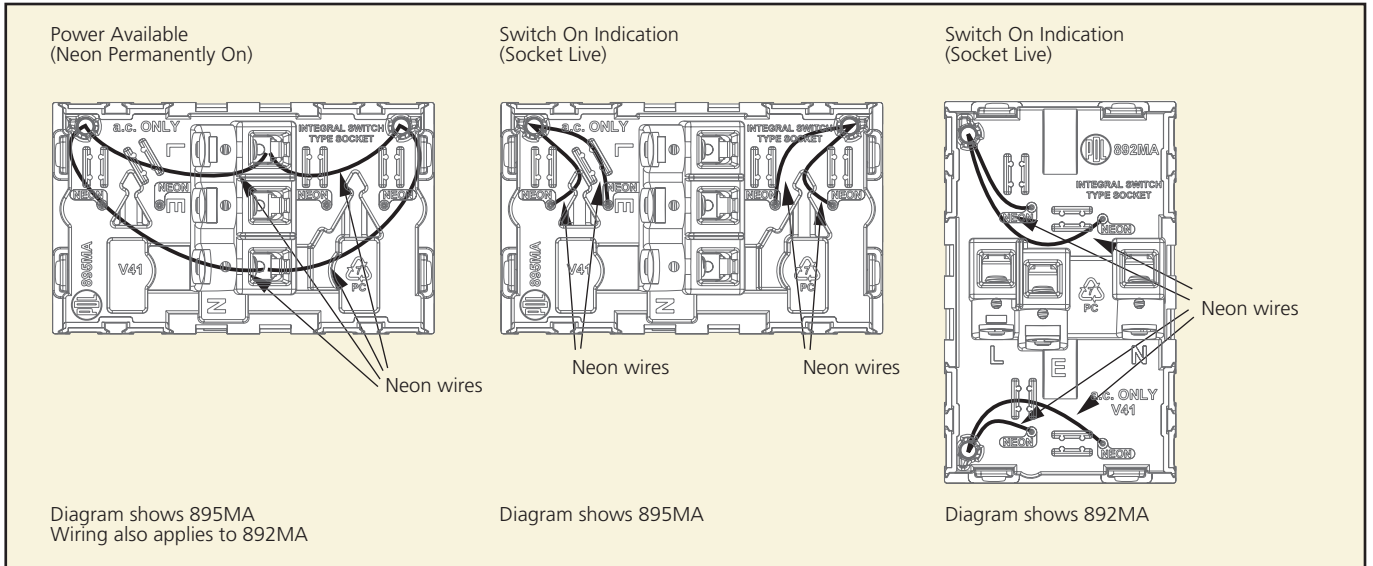


Wiring Diagrams > CONTINUED

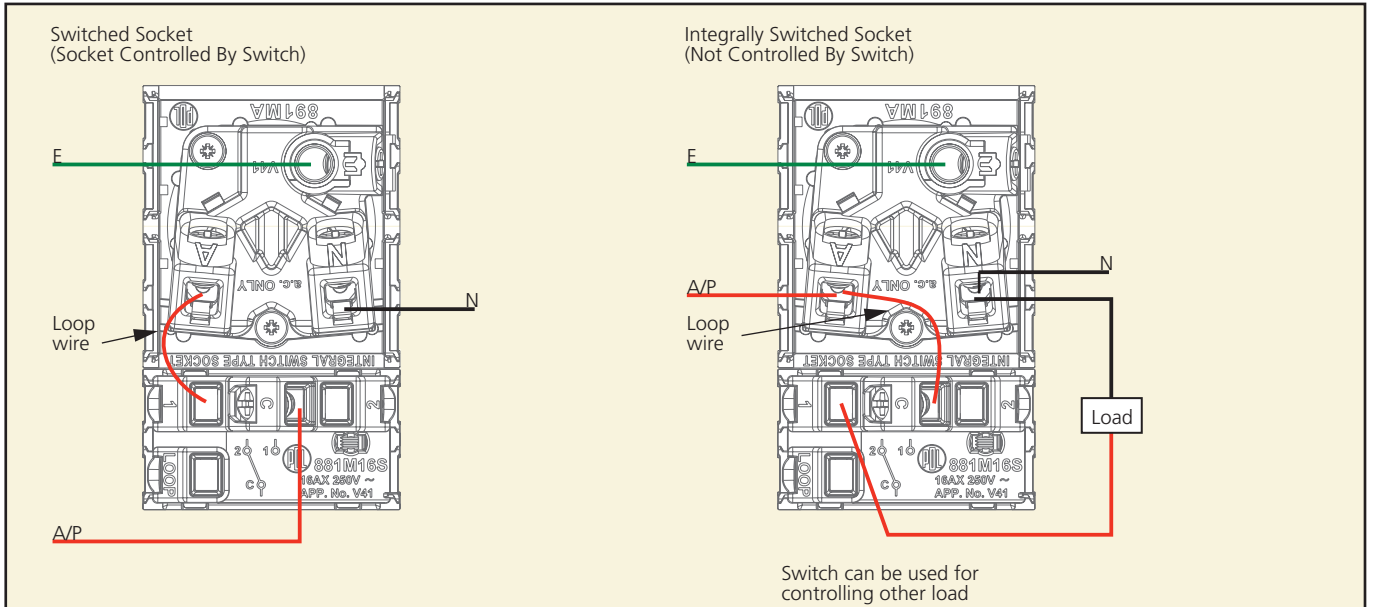
881M16S master switching for security



892MA/895MA double integrally switched sockets

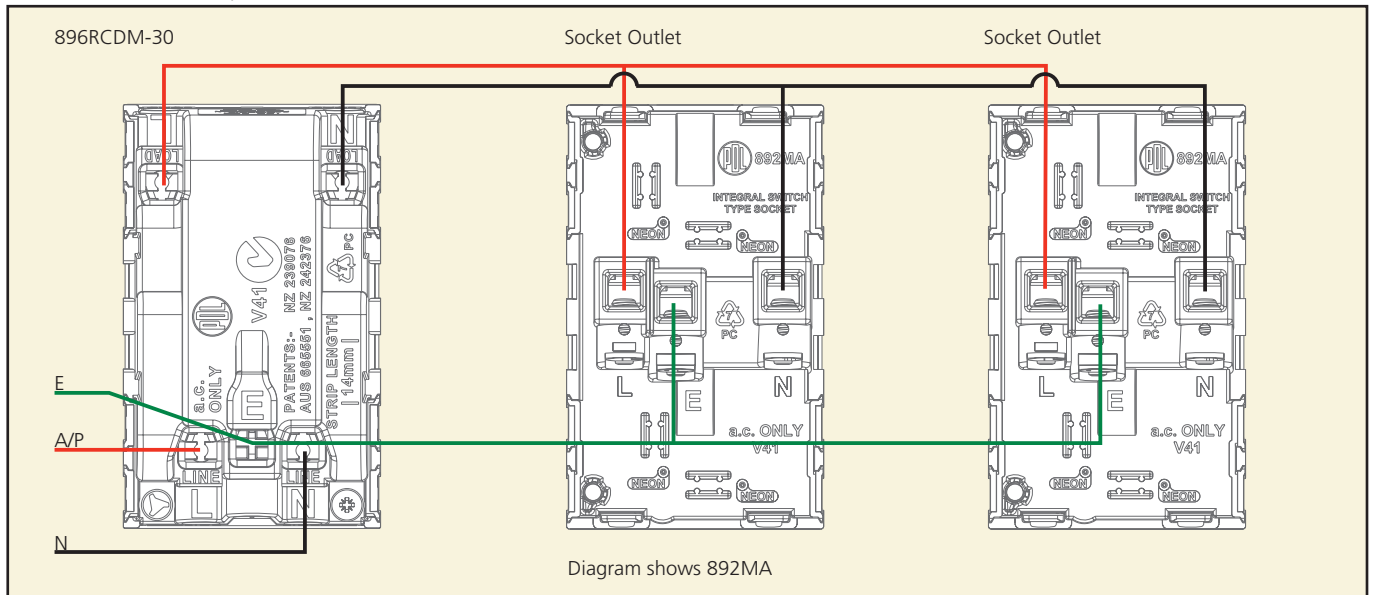


891A single vertical socket

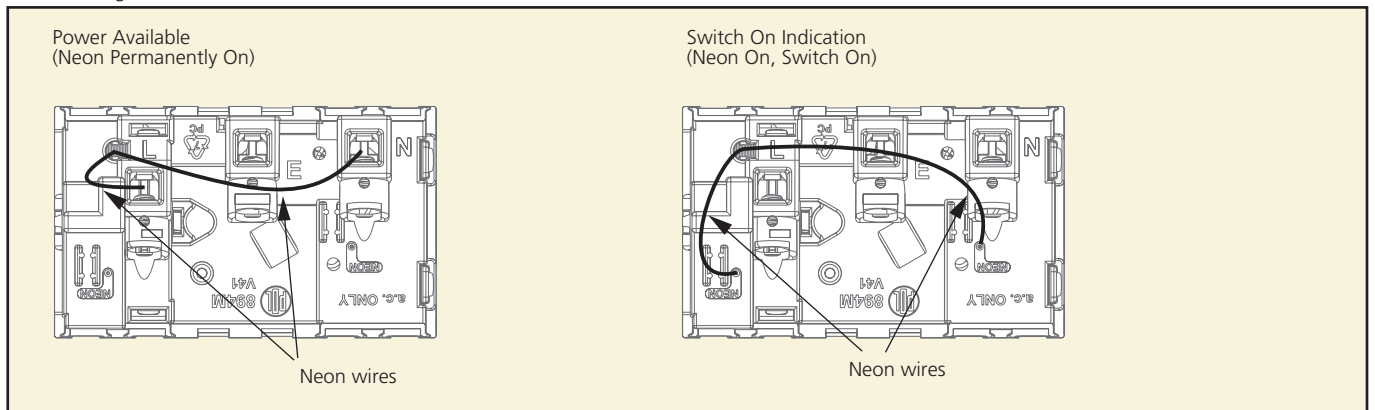


Wiring Diagrams > CONTINUED

896RCDM-30 RCD protect outlets



894M single horizontal switched socket





Index

ITEM	PAGE	ITEM	PAGE	ITEM	PAGE	ITEM	PAGE
100MPIR	20	600RM	20	800WBC	17	881M16SHD	14
144MT	17	610ML24	21	815MB	15	881M16SHWS	14
144PT	17	611M	24	824M	14	881M16SIO	14
145V	17	615MBB	23	833M	14	881M16SL	14
146H	17	615MF	23	840MRGB	15	881M16SMR	14
146S	24	615MRB	23	840MRWY	15	881M16SMW	14
148H	17	615MST	23	860BM	15	881M16SO	14
148V	17	617M2	22	860M16	12	881M16SP	14
1588M	20	619MAC	22	860M16P	14	881M16SPB	12
500ID	20	619MALC	22	860M16PB	12	881M16SPB	14
500TT	22	619MD	22	860M16PB	14	881M16SPU	14
510ML12	21	619MDL	22	861M16	12	881M16SSE	14
510ML24	21	619MKC	22	861M16AC	14	881M16SSP	14
510MN	21	619MKLC	22	861M16B	14	881M16SWH	14
516M	23	619MM	22	861M16DW	14	881M16SWT	14
518M	22	648TM	20	861M16F	14	881M16V	13
519M6	22	666TMB24	20	861M16FR	14	881M32SN	13
528M	23	666TML24	21	861M16H	14	881M32SNH	14
528MF	23	680M32	18	861M16HD	14	881M32SNR	14
528MFI	23	680M32AC	18	861M16HWS	14	882	4
528MFO	23	680M32H	18	861M16IO	14	882M10N	12
528MFS	23	680M32I/O	18	861M16L	14	883	4
528MFV	23	680M32O	18	861M16MR	14	891A	5
528MI	23	680M32R	18	861M16MW	14	891MA	10
529M	23	680S	24	861M16O	14	892A	5
540MBK	23	680TMNPB	19	861M16PU	14	892MA	11
540MBU	23	680TMPB	19	861M16SE	14	892MA/15	11
540MGN	23	687M3	18	861M16SP	14	894	5
540MRD	23	687M3A/M	18	861M16WH	14	894M	10
540MWH	23	687M3I/II	18	861M16WT	14	894M/15	10
540MYL	23	687M4	18	880BM	15	894MA	10
551M2	20	687M4F	18	880TPB1	13	895A	5
573MM	19	800DS	7	880TPB2	13	895MA	11
581M16HF	18	800FB2H	17	881	4	895MA/15	11
581M16HFAL	18	800FB2V	17	881M16L	13	896RCDM30	16
581M16HFCL	18	800G	6	881M16M	13	LCHRJ45	24
581M16HFF	18	800G2H	6	881M16S	12	S800GPS	9
581M16HFMMW	18	800G2V	6	881M16SAC	14	S800GPS2V	9
581M16HFS	18	800MA	15	881M16SB	14	S881	8
581M16PBM	19	800N240	16	881M16SDW	14	S882	8
581M16PBP	19	800PS	7	881M16SF	14	S883	8
581M16PBS	19	800PS2H	7	881M16SFR	14	S894	9
581M16PS	19	800PS2V	7	881M16SH	14	S895A	9



LexCom Home Network

Connect and go.

LexCom Home – the professional VDI network with a fast, NEW tool-less connection

Distribute phone, TV, and data signals to any room in the house via the same cable

When planning your new home, think **SMART!**

Style – match the outlets to your décor. Outlets are available in different colours to match PDL 800, 600 Series switches, sockets, etc.

Modularity – upgrade easily by adding modules to provide new services. LexCom has been designed from day one with customisation in mind.

Advanced capabilities. Control and watch movies from the lounge room DVD player on your bedroom TV, or send music from your PC to any stereo receiver in the house.

Rapid configuration – change an outlet from a phone jack to a TV outlet in seconds. Each outlet can be configured to receive any type of signal quickly and easily.

Total Control – LexCom takes care of all your current communication requirements and has the built in flexibility necessary to cater for all your future needs as well.



www.pdl.co.nz

For more information or a copy of the product brochure please contact Customer Services on 0800 652 999.



P D L



Schneider Electric products are available through electrical wholesalers New Zealand wide.
All PDL Electrical Products are designed to ISO 9001.

Freecall: 0800 652 999, Freefax: 0800 101 152
Email: sales@nz.schneider-electric.com
Online product detail: www.pdl.co.nz

