

Blue Line Intrusion Detectors



Security Systems



The modular Blue Line intrusion detectors from Bosch feature four detector models and a choice of camera modules to help you reduce inventory.

Security you can rely on.

BOSCH

Reduce inventory – Increase installer productivity

When your system installers encounter the unexpected on site, the specialty detectors they need to complete the job often are back at the warehouse – not in their vans or trucks.

Blue Line intrusion detectors from Bosch give you the space-saving flexibility to equip your installers with the detectors they need to complete the work order the first time. Just four models and a choice of plug-in camera modules let them handle a wide range of residential and light-commercial applications.

Reduce installer training and installation time

Blue Line detectors feature an innovative, easy-to-mount, two-piece design. All electronics and the sealed optical chamber are incorporated into the front cover that attaches to the base. No adjustment is required for mounting heights of 7.5 ft. to 9 ft. (2.25 m to 2.74 m).

Blue Line intrusion detectors cover all ranges up to 35 ft. (11 m) without adjustments and provide user selectable, look-down zones.

Superior response and false alarm immunity

Advanced First Step Processing (FSP) provides virtually instantaneous response to human targets while eliminating false alarms created by other sources. With FSP, installers do not have to select the sensitivity level for each application. Instead, sensitivity is automatically adjusted.

All Blue Line detectors compensate for temperature variations to assure optimal performance regardless of ambient conditions. Sealed optics provide draft and insect immunity.



Blue Line P1 Passive-Infrared (PIR) Detector



Standard model offers an unmatched combination of performance and economy. Dimensions: 4.2 in x 2.4 in x 1.9 in (10.7 cm x 6.1 cm x 4.8 cm)

Blue Line P1-P Pet Friendly® Passive-Infrared (PIR) Detector



Bosch's exclusive Pet Friendly® technology distinguishes signals caused by humans from those caused by one or two animals with a combined weight of 30 lbs (13.6 kg). Dimensions: 4.2 in x 2.4 in x 1.9 in (10.7 cm x 6.1 cm x 4.8 cm)



Screw-less Cover Lock – Quicker than a traditional screw lock. Durable design won't wear out like regular screw-in plastic. No extra parts. Required in some countries.



Convenient plug-in terminal strip makes for easier access to the wire terminals while providing ample working space for wiring.

Blue Line Q1 Quad Passive-Infrared (PIR) Detector



Incorporates two individual detectors that function as two PIRs in one. Both must activate to cause an alarm. Eight detection layers include user-selectable, look-down, coverage zone. Dimensions: 5.2 in x 2.4 in x 1.9 in (13.2 cm x 6.1 cm x 4.8 cm)

Blue Line D1-P TriTech[®] PIR/Microwave Detector



Combines passive infrared (PIR) and microwave detection technology with proprietary signal processing algorithms to differentiate disturbances in the detector field. Distinguishes signals caused by humans from those caused by one or two animals (or numerous rodents) with a combined weight of 100 lbs (45 kg). Dimensions: 5.2 in x 2.4 in x 1.9 in (13.2 cm x 6.1 cm x 4.8 cm)

B328-3 Gimbal Mount Bracket



B335-3 Low Profile Mount Bracket



B338-3 Ceiling Mount Bracket



Optional brackets can be used with any Blue Line detector model.

Blue Line A1-CM Monochrome Camera Module



Pinhole charge-coupled-device (CCD) camera module can be attached to any Blue Line detector. Camera can continuously operate or be set for either 15 seconds or 90 seconds when triggered by the detector alarm. Features 380 TV lines of horizontal resolution and 3-lx light sensitivity. EIA and CCIR video formats are available.

Blue Line A1-CC Color Camera Module



Compact, color charge-coupled-device (CCD) camera module can be attached to any Blue Line detector. Camera can continuously operate or be set for either 15 seconds or 90 seconds when triggered by the detector alarm. Features 330 TV lines of horizontal resolution and 3.4-lx light sensitivity. NTSC and PAL video formats are available.

More choices. Better choices.

Bosch offers a comprehensive selection of detectors for commercial, industrial and residential applications.

- Passive Infrared (PIR) Detectors
- Combination PIR and Microwave Detectors
- Long-Range PIRs
- 360° Ceiling Mount PIRs
- Photoelectric Beam
- Request-to-Exit PIRs
- PIRs with Integrated CCD Camera
- Glass Breaks
- Pet/Animal Immune Detectors
- Seismic Detectors for Safes, Vaults and ATMs

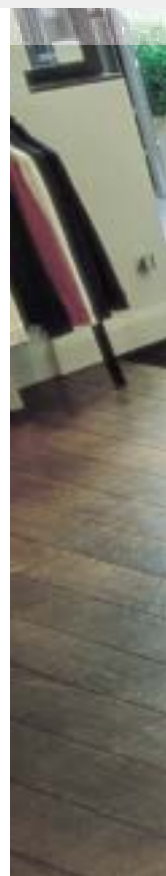
Bosch Security Systems
130 Perinton Parkway
Fairport, NY 14450
phone: 800.289.0096
fax: 585.223.9180

For more information, please visit
www.boschsecurity.us

All rights reserved
printed in the U.S.A.
part # F01U001134B

Tradition of quality and innovation

For more than 100 years, the Bosch name has stood for quality and reliability. Bosch Security Systems proudly offers a wide range of fire, intrusion, CCTV, management and communication systems and components to help you find the solution for any application. We are the global supplier of choice for innovative technology, backed by the highest level of service and support. When you need solutions you can rely on, choose Bosch.



Security you can rely on.

BOSCH