

**PB-30HD/60HD/80HD/120HD**

Twin Photobeam Detector  
(with laser alignment function)

- Reliable Perimeter security and protection
- Laser beam alignment function
- Weather proof: Anti-rain, snow, dew, mist, frost--etc
- IP-55 water proof
- Automatic input power filtering

**PB-15HD/25HD**

Twin Photobeam Detector

- Reliable Perimeter security and protection
- Weather proof: Anti-rain, snow, dew, mist, frost--etc
- CE approved
- IP-55 water proof
- Easy, quick installation

**BS-200/BS-400/BS-600/BS-800** Barrier (Curtain) Sensor

- Aluminum housing/PC anti-UV cover/ABS side cap
- LED alignment indicator
- Cable wire or terminal block connection
- Sensing range: 8 meters (26 feet)
- L-brackets and mounting hardware included

**IR-3000G**

Photoelectric Beam Sensor  
(Relay output)

- Long sensing range: 30 meters
- IP-66 water proof
- N.C./N.O./Common Output
- Terminal block wiring connection
- Mounting bracket/screws included

**IR-2000TS**

Through Beam Photoelectric  
Beam Sensor

- Sensing range: 20 meters
- IP-66 water proof
- N.C./N.O./Common Relay Output
- Terminal block wiring connection
- Mounting hardware included
- AC/DC 12~24V input voltage.

**DES-700**

Door Entry Alarm System

- Retro-Reflection type
- Sensing range: 0-6 meters (22 feet)
- Will make "ding-dong" sound or siren sound when the beam is interrupted
- Speaker volume can be adjusted or turned
- When in siren mode, sounding time is adjustable from 3 to 30 seconds

**IR-1200L/IR-1200D**

Retro-Reflective Photoelectric  
beam sensor

- Universal AC/DC input voltage
- IP-66 water proof
- N.C./N.O. Output
- 6 feet cable wires
- Mounting bracket/screws included
- Sensing range: 12 meters

**IR-700L/IR-500LP(N.C.)**  
**IR-700D/IR-500DP(N.O.)**



Free Power Photoelectric Beam  
Sensor

- Universal AC/DC input voltage
- IP-66 water proof
- N.C./N.O. Output
- 6 feet cable wires
- Mounting bracket/screws included

**IR-3000L(N.C.)**  
**IR-3000D(N.O.)**



Free Power Photoelectric Beam  
Sensor

- Universal AC/DC input voltage
- IP-66 water proof
- N.C./N.O. Output
- 6 feet cable wires
- Mounting bracket/screws included

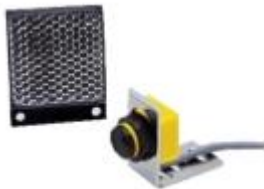
**IR-100L(N.C.)**  
**IR-100D(N.O.)**



Free Power Photoelectric Beam  
Sensor

- Universal AC/DC input voltage
- IP-66 water proof
- N.C./N.O. Output
- 6 feet cable wires
- Mounting bracket/screws included

**IR-300M18(N.C.)**  
**IR-300M18(N.O.)**



Mini M18 Photoelectric Beam  
Sensor (Transistor output)

- Mini size: 30mm(L)×18mm(D)
- Super sensing range: 30 meters(Through Beam)
- Twice Output: Both NPN/PNP
- Water proof: IP-67

**IR-3000M18(N.C.)**  
**IR-3000M18(N.O.)**



Mini M18 Photoelectric Beam  
Sensor (Transistor output)

- Mini size: 30mm(L)×18mm(D)
- Super sensing range: 30 meters(Through Beam)
- Twice Output: Both NPN/PNP
- Water proof: IP-67

**IR-15M18(N.C.)**  
**IR-15M18(N.O.)**



Mini M18 Photoelectric Beam  
Sensor (Transistor output)

- Mini size: 30mm(L)×18mm(D)
- Super sensing range: 30 meters(Through Beam)
- Twice Output: Both NPN/PNP
- Water proof: IP-67

**DR-300(N.C.)**

**DR-300(N.O.)**



M18 Series Photoelectric Beam  
Sensor (Transistor output)

- Super sensing range: 20 meters (Through Beam)
- Twice Output: Both NPN/PNP
- Water proof: IP-67

**DR-2000(N.C.)**

**DR-2000(N.O.)**



M18 Series Photoelectric Beam  
Sensor (Transistor output)

- Super sensing range: 20 meters (Through Beam)
- Twice Output: Both NPN/PNP
- Water proof: IP-67

**DR-40(N.C.)**

**DR-40(N.O.)**



M18 Series Photoelectric Beam  
Sensor (Transistor output)

- Super sensing range: 20 meters (Through Beam)
- Twice Output: Both NPN/PNP
- Water proof: IP-67

**RS-06**



- 2" (50 mm) Operating Gap
- Nd-Fe-B N35 magnet, high performance than Alnico magnetic !
- Aluminum-Shape bracket-adjustable
- Armored cable wire length: 24" (61 cm)
- UL standard grade AWG#22 wiring